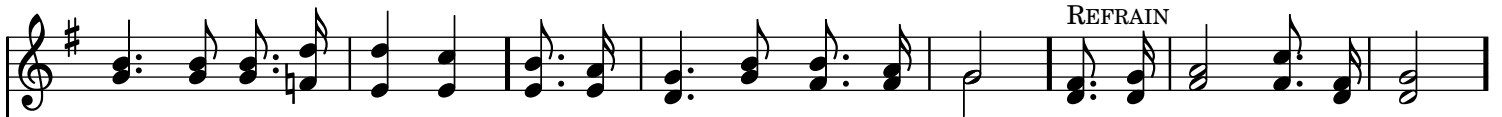




1. Thou my ev - er - last - ing por - tion, More than friend or life to me, All a -
 2. Not for ease or world - ly pleas - ure, Not for fame my prayer shall be; Glad - ly
 3. Lead me thro' the vale of shad - ows, Bear me o'er life's fit - ful sea: Then the



long my pil-grim jour-ney, Sav-iour, Thou wilt walk with me. Close to Thee, close to Thee,
 will I toil and suf-fer, Keep me walk-ing, Lord, with Thee. Close to Thee, close to Thee,
 gate of life e - ter-nal, I shall en - ter, Lord, with Thee. Close to Thee, close to Thee,



Close to Thee, close to Thee; All a - long my pil-grim journey, Sav-iour, Thou wilt walk with me.
 Close to Thee, close to Thee; Glad - ly will I toil and suf-fer, Keep me walk-ing, Lord, with Thee.
 Close to Thee, close to Thee; Then the gate of life e - ter-nal, I shall en - ter, Lord, with Thee.

