



1. On-ly an act of kindness That you, lit-tle child, may show, While seek-ing to please the
 2. On-ly a glimpse of sunshine That you, lit-tle child, may shed, To bright-en a path of
 3. On-ly a word for Je - sus That you, lit-tle child, may speak; A word that will reach some
 4. On-ly a lit - tle ser-vice While seeking to live for God Mid darkness, and sin, and



Sav - iour, And more like Him-self to grow. On - ly a fee - ble ef - fort
 sor - row Where oth - ers may fear to tread. On - ly some self - de - ni - al,
 sin - ner Whom Je - sus once came to seek. On - ly a lit - tle pa - tience
 sor - row, Where Je - sus, Him-self, once trod. On - ly a lit - tle wait - ing,



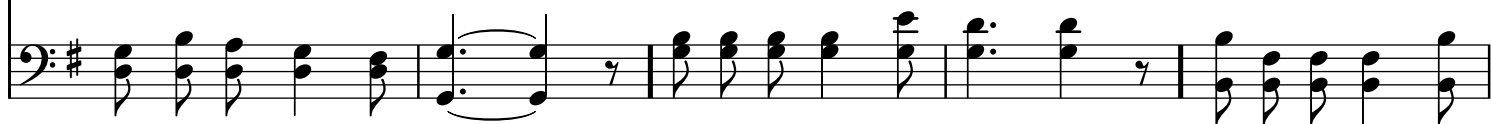
To light - en the heav - y load Of some wear-y, way - worn trav - 'ler, While
 At - tend - ed, per-haps, with pain, But all that is loss at pres - ent Will
 When some-bod - y does you wrong, For Je - sus will judge of - fen - ses, Dear
 Dear child, let your light shine bright, For Je - sus will come and take you To



REFRAIN



wending his toil - some road. On-ly a word for Je - sus, On-ly a whis-pered
 someday be rich - est gain. child, it will not be long.
 glo - ry, and love, and light.



prayer, Seeking His help and blessing, Is heard by our Lord up there.

The image shows a musical score for a hymn. It consists of two staves: a treble clef staff on top and a bass clef staff on the bottom. Both staves are in the key of G major, indicated by a single sharp (F#) on the key signature. The melody is written in the treble staff, and the bass line is in the bass staff. The lyrics are written below the treble staff, aligned with the notes. The music is in 4/4 time, with a common meter feel. The piece ends with a double bar line.