

PHYSICS LETTERS B

Physics Letters B 397 (1997) 333–338

Glueball- $q\bar{q}$ filter in central hadron production

Frank E. Close^{a,1}, Andrew Kirk^{b,2}

^a *Rutherford Appleton Laboratory, Chilton, Didcot, OX11 0QX, UK*

^b *School of Physics and Space Research, Birmingham University, Birmingham, UK*

Received 18 December 1996

Editor: K. Winter



ELSEVIER

PHYSICS LETTERS B

EDITORS

L. Alvarez-Gaumé, Theory Division, CERN, CH-1211 Geneva 23, Switzerland,

E-mail address: Alvarez@NXTH04.CERN.CH

Theoretical High Energy Physics (General Theory) from the Iberian Peninsula, France, Switzerland, Italy, Malta, Austria, Hungary, Balkan countries and Cyprus

J.-P. Blaizot, Service de Physique Théorique, Orme des Merisiers, C.E.A.-Saclay, F-91191 Gif-sur-Yvette Cedex, France,

E-mail address: plb(@)SPHT.SACLAY.CEA.FR

Theoretical Nuclear Physics

M. Dine, Physics Department, University of California at Santa Cruz, Santa Cruz, CA 95064, USA,

E-mail address: Dine@SCIPP.UCSC.EDU

Theoretical High Energy Physics from countries outside Europe

R. Gatto, Theory Division, CERN, CH-1211 Geneva 23, Switzerland,

E-mail address: Raoul.Gatto@CERN.CH

Theoretical High Energy Physics (Particle Phenomenology) from the Iberian Peninsula, France, Switzerland, Italy, Malta, Austria, Hungary, Balkan countries and Cyprus

H. Georgi, Department of Physics, Harvard University, Cambridge, MA 02138, USA,

E-mail address: Georgi@PHYSICS.HARVARD.EDU

Theoretical High Energy Physics from countries outside Europe

Aims and Scope

Physics Letters B ensures the rapid publication of letter-type communications in the fields of Nuclear Physics/Intermediate Energy Physics, High Energy Physics and Field Theory.

Abstracted/indexed in:

Current Contents: Physical, Chemical & Earth Sciences; INSPEC.

Subscription Information 1997

PHYSICS LETTERS A (ISSN 0375-9601) and PHYSICS LETTERS B (ISSN 0370-2693) will each be published weekly. For 1997 13 volumes, volumes 224–236 (78 issues altogether) of Physics Letters A have been announced. For 1997 26 volumes, volumes 390–415 (104 issues altogether) of Physics Letters B have been announced. The subscription prices for these volumes are available upon request from the Publisher. PHYSICS REPORTS (ISSN 0370-1573) will be published approximately weekly. For 1997 14 volumes, volumes 277–290 (84 issues altogether) of Physics Reports have been announced. The subscription price for these volumes is available upon request from the Publisher.

A combined subscription to the 1997 issues of Physics Letters A, Physics Letters B and Physics Reports is available at a reduced rate.

Subscriptions are accepted on a prepaid basis only and are entered on a calendar year basis. Issues are sent by SAL (Surface Air Lifted) mail wherever this service is available. Airmail rates are available upon request.

For orders, claims, product enquiries (no manuscript enquiries) please contact the Customer Support Department at the Regional Sales Office nearest to you:

U.S. mailing notice – Physics Letters B (ISSN 0370-2693) is published weekly by Elsevier Science B.V., P.O. Box 211, 1000 AE Amsterdam, The Netherlands. Annual subscription price in the USA is US\$ 6917.00 (valid in North, Central and South America only), including air speed delivery. Periodicals postage paid at Jamaica, NY 11431.

USA POSTMASTERS: Send address changes to Physics Letters B, Publications Expediting, Inc., 200 Meacham Avenue, Elmont, NY 11003.

AIRFREIGHT AND MAILING in the USA by Publications Expediting, Inc., 200 Meacham Avenue, Elmont, NY 11003.

© The paper used in this publication meets the requirements of ANSI/NISO Z39.48-1992 (Permanence of Paper).

W. Haxton, Institute for Nuclear Theory, Box 351550, University of Washington, Seattle, WA 98195-1550, USA,

E-mail address: plb@PHYS.WASHINGTON.EDU

Theoretical Nuclear Physics

P.V. Landshoff, Department of Applied Mathematics and Theoretical Physics, University of Cambridge, Silver Street, Cambridge CB3 9EW, UK,

E-mail address: P.V.Landshoff@DAMTP.CAM.AC.UK

Theoretical High Energy Physics from Ireland, United Kingdom, Benelux, Scandinavian countries, German Federal Republic, Poland, Czech Republic, Slovak Republic, Baltic countries and the Commonwealth of Independent States

L. Montanet, CERN, CH-1211 Geneva 23, Switzerland,

E-mail address: Lucien.Montanet@CERN.CH

Experimental High Energy Physics

J.P. Schiffer, Argonne National Laboratory, 9700 South Cass Avenue, Argonne, IL 60439, USA,

E-mail address: Schiffer@ANL.GOV

Experimental Nuclear Physics (Heavy Ion Physics, Intermediate Energy Nuclear Physics)

R.H. Siemssen, KVI, University of Groningen, Zernikelaan 25, NL-9747 AA Groningen, The Netherlands,

E-mail address: Siemssen@KVI.NL

Experimental Nuclear Physics (Heavy Ion Physics, Low Energy Nuclear Physics)

K. Winter, CERN, CH-1211 Geneva 23, Switzerland

E-mail address: Klaus.Winter@CERN.CH

Experimental High Energy Physics

New York, Elsevier Science, P.O. Box 945, New York, NY 10159-0945, USA. Tel: +1 212 633 3730, [Toll Free number for North American customers: 1 888 4ES INFO (437 4636)], Fax: +1 212 633 3680, E-mail: usinfof@elsevier.com

Amsterdam, Elsevier Science, P.O. Box 211, 1000 AE Amsterdam, The Netherlands. Tel: +31 20 485 3757; Fax: +31 20 485 3432, E-mail: nlinfof@elsevier.nl

Tokyo, Elsevier Science, 9-15, Higashi-Azabu 1-chome, Minato-ku, Tokyo 106, Japan. Tel: +81 3 5561 5033; Fax: +81 3 5561 5047, E-mail: kyf04035@niftyserve.or.jp

Singapore, Elsevier Science, No. 1 Temasek Avenue, #17-01 Millenia Tower, Singapore 039192. Tel: +65 434 3727; Fax: +65 337 2230, E-mail: asiainfo@elsevier.com.sg

Claims for issues not received should be made within six months of our publication (mailing) date.

Advertising Offices

International: Elsevier Science, Advertising Department, The Boulevard, Langford Lane, Kidlington, Oxford OX5 1GB, UK. Tel: +44 1865 843565; Fax: +44 1865 843976.

USA and Canada: Weston Media Associates, Dan Lipner, P.O. Box 1110, Greens Farms, CT 06436-1110, USA. Tel: +1 203 261 2500; Fax: +1 203 261 0101.

Japan: Elsevier Science Japan, Marketing Services, 1-9-15 Higashi-Azabu, Minato-ku, Tokyo 106, Japan. Tel: +81 3 5561 5033; Fax: +81 3 5561 5047.





ELSEVIER

3 April 1997

PHYSICS LETTERS B

Physics Letters B 397 (1997) 333–338

Glueball- $q\bar{q}$ filter in central hadron production

Frank E. Close^{a,1}, Andrew Kirk^{b,2}^a Rutherford Appleton Laboratory, Chilton, Didcot, OX11 0QX, UK^b School of Physics and Space Research, Birmingham University, Birmingham, UK

Received 18 December 1996

Editor: K. Winter

Abstract

Glueballs and $q\bar{q}$ of the same J^{PC} are distinguishable due to their boson versus fermion internal structure. This leads to a different topology for central production of glueballs and $q\bar{q}$. We apply this test to data from the WA102 experiment and find that the $f_0(1500)$ and the $f_2(1900)$ show behaviour consistent with glueballs and opposite to that expected if they were pure $q\bar{q}$ states. © 1997 Elsevier Science B.V.

We propose a method for filtering glueballs with $J^{\text{PC}} = (0, 1, 2)^{++}$ from their $^3P_{(J=0,1,2)} q\bar{q}$ counterparts when they are produced in the central region of diffractive processes. The derivation is intuitive rather than rigorous, yet its application to data from the CERN WA102 experiment turns out to reveal some remarkable empirical regularities [1].

These matters are timely given the considerable current interest in the possibility that the lightest glueball is a scalar with a mass of about 1.5 GeV [2,3]. This is motivated both by predictions of lattice QCD [4] and by emerging hints in various experiments where glueball production has historically been expected to be favoured [3,5–7]. One such mechanism is “central production” where the produced mesons have no memory of the flavour of the initiating hadrons [8] and are excited via the gluonic fields of the “pomeron” [9]. Consequently it has been anticipated that production of glueballs may be especially favoured in such processes.

However, such anticipation requires some caution.

First there is the well known problem that non-diffractive transfer of flavour (Regge exchange) can contaminate this simple picture and lead to the appearance of $q\bar{q}$ mesons in the central region. Furthermore, even for the diffractive production, momentum transfer between the gluons of the pomeron and the aligned constituents of the produced meson may lead to either gg or $q\bar{q}$ states. The former may be favoured relative to $q\bar{q}$ production due to colour factors but unless further cuts are made to enhance the gg signal, the appearance of novel states in central production is not of itself definitive evidence for a glueball.

However, there has been an interesting development with the recent empirical observation [10] that the states seen in central production are a function of the topology, and depend on whether events are classified as either LL or LR (“left left” or “left right” in the sense of how the beams scatter into the final state relative to the initial direction). Specifically, when the two beams scatter into opposing hemispheres (LR as defined in Ref. [10]) the $f_1(1285)^3P_1 q\bar{q}$ state is clearly

¹ E-mail: fec@v2.rl.ac.uk

² E-mail: ak@hep.ph.bham.ac.uk

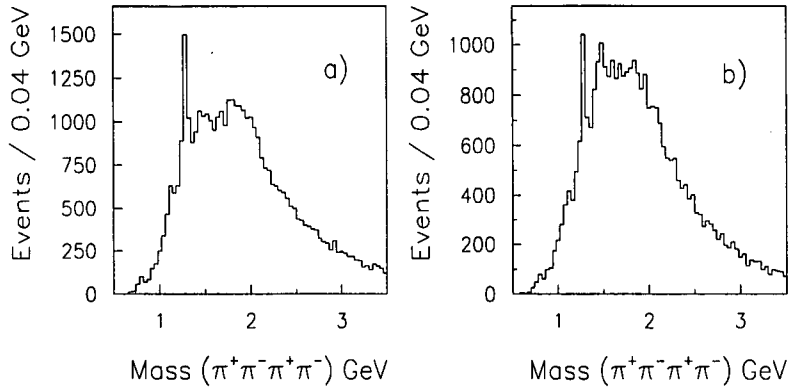


Fig. 1. The 4π mass spectra from Ref. 10 for (a) LR and (b) LL topologies.

visible (Fig. 1a) whereas in the same side configuration (LL) it is less prominent relative to the structures in the 1.4–2.0 GeV mass range (fig 1b). Such discrimination has also been seen for the $f_2(1270)$ 3P_2 $q\bar{q}$ state relative to the enigmatic $f_0(980)$ in the $\pi\pi$ channel [10]. Similar phenomena have recently been noted also in Fermilab data [11] and, in retrospect, at the ISR [12].

This phenomenon led us to reconsider the mechanisms for the production of gg and $q\bar{q}$ in the central region. Our notation is that in the centre of mass frame the initial protons have four-vectors

$$p = (P + M^2/2P; p_T = 0, p_L = P),$$

$$q = (P + M^2/2P; q_T = 0, q_L = -P),$$

the outgoing protons having respectively momenta

$$p' \equiv (p'_L = x_a p; p'_T), \quad q' \equiv (q'_L = x_b q; q'_T)$$

and $x_F \equiv x_a - x_b$. The data have historically been presented as a function of $M_R^2 \sim (1 - x_a)(1 - x_b)s$ with some separation as a function of

$$t_a \sim -\frac{(p'_T)^2}{1 - x_a}; \quad t_b \sim -\frac{(q'_T)^2}{1 - x_b}.$$

The topological separation into LL and LR is novel and independent of the magnitudes of $t_{a,b}$ [10]. We shall suggest that it is driven primarily by the variable $dP_T \equiv |p'_T - q'_T|$ and that gg configurations are enhanced in kinematic configurations where the gluons can flow “directly” into the final state with only small momentum transfer, in particular when $dP_T \rightarrow 0$.

A major uncertainty when analysing these processes is the modelling of the pomerons’ interactions. While it is now rather generally accepted that a pomeron is a colour singlet gluonic system (see, e.g., Ref. [9]), an unknown feature is the topology of the individual constituent gluons in production processes. For example, Bialas and Landshoff [9] consider Higgs production by double pomeron exchange by treating each pomeron as a colour singlet system of two gluons; one gluon is “passive” and serves primarily to ensure overall colour singlet exchange (Fig. 2a) while the other gluon in each pomeron transfers (longitudinal) momentum which stimulates the Higgs production. This topology has some problems for the exclusive production of $q\bar{q}$ or a glueball. While it may be applicable to the pointlike Higgs, for the exclusive production of a spatially extended hadron, which is the case of interest in the present paper, one anticipates that it may be suppressed. The essential reason is the large rescattering that is required to turn the large relative longitudinal momenta of the “active” gluons into co-moving constituents necessary for the exclusive production of a composite hadron.

Specifically, consider the meson, R , to have an overall longitudinal momentum $P \equiv P_3$ and to be made of constituents (e.g. gluons or quarks) of mass m . The four momentum p^μ of a particle with mass m may be written

$$p^\mu = (p^+ \equiv p_0 + p_3; p^- = \frac{m^2 + p_T^2}{p^+}; p_T).$$

The momentum of the meson R is shared among its

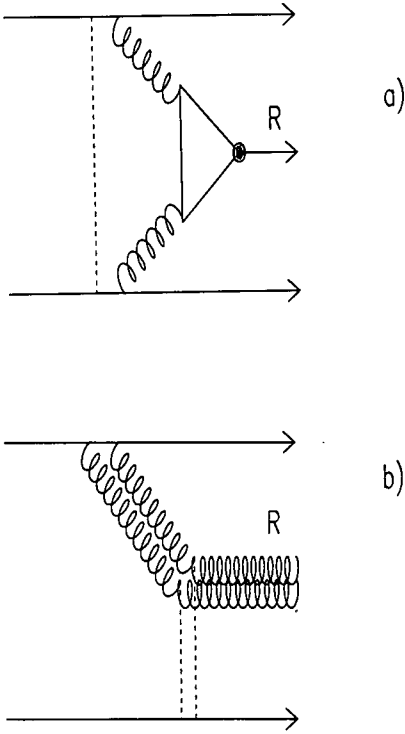


Fig. 2. (a) Two gluons with large p_L fuse to make a meson R . (b) Diffractive scattering of a gluonic pomeron to produce a glueball.

constituents, the j -th constituent carrying a fraction $x_j = p_j^+ / P^+$ where the total (time-like) momentum $P^+ = \sum_j p_j^+$ is conserved, $\sum_j x_j = 1$. The relative momentum of the j -th constituent, $l_j = p_j - x_j P$, is space like with $l^2 = -l_T^2$ and $l^+ = 0$. For a meson that is an S -wave state in its rest frame, the light cone wavefunction will have a structure that may be parametrised in the form [13]

$$\phi_{LC}(x, l_T) \sim \exp\left(-\sum_j \frac{(l_T^2 + m^2) R^2}{x_j}\right),$$

where the sum is over the constituents, j , and R is a measure of the hadron's size. (Excitation of the l_T degree of freedom corresponds to P -wave (and higher orbitals) in the static limit [14].) For a system of two equal mass constituents with $\delta x \equiv x_1 - x_2$, the structure of the exponent becomes

$$\exp\left(-\frac{4(l_T^2 + m^2) R^2}{1 - \delta x^2}\right)$$

which is suppressed if l_T is large or if $\delta x \rightarrow 1$. This is essentially the well known form factor suppression of asymmetric configurations [13,15] and becomes increasingly significant as M_R becomes large. It is manifested empirically in the sharp cut off of the M_R distribution in central hadron production (as for example when $M_R > 2$ GeV in Fig. 1 even though the kinematic reach of the experiment goes beyond this).

The above remarks are well known for the production of spatially extended $q\bar{q}$ and will also be expected to apply to the production of glueballs. However, in addition to these common features there can be generic differences between the production of glueballs and $q\bar{q}$ of the same J^{PC} . For example, a qualitative difference may result if glueballs are more pointlike than $q\bar{q}$ or have a hard gluonic component in their wavefunction, either of which would relatively enhance their production. The hard rescattering of $gg \rightarrow gg$ rather than $gg \rightarrow q\bar{q}$ is also aided by colour factors. There is also the possibility that the more singular behaviour of propagators for confined gluons relative to quarks at zero momentum [16] may lead to different production rates for $q\bar{q}$ and gg as a function of the kinematical variables, for example in dP_T and thereby in LL - LR .

The above description of the pomeron is an extreme case in the sense that its gluons are treated asymmetrically. The exclusive meson production then arises when one "hard" gluon from one pomeron fuses with a gluon from the other pomeron. These two gluons have a large relative p_L and in consequence are much separated in δx ; this disfavors exclusive production. An alternative extreme, which can reduce this penalty, is where the two gluons within a single pomeron cooperate in being strongly aligned, both in p_L and p_T . In this case we can regard the initial proton beam as a source of pomerons, analogous to the way that an electron beam is a source of photons. Consider the process in the laboratory frame: the pomerons then scatter "diffractively" in the colour singlet gluonic field of the target (Fig. 2b) analogous to the diffractive photoproduction of vector mesons. With the pomeron having $C = +$ we anticipate that this mechanism will favourably produce $J^{PC} = 0^{++}, 2^{++}$ glueballs (which are the lightest according to lattice QCD). The pomeron can in principle also convert into $J^{PC} = 0^{++}, 2^{++}$ $q\bar{q}$ mesons in this process analogous to the photon turning into $J^{PC} = 1^{--}$ $q\bar{q}$. However, for t and $q_T' \rightarrow 0$, diffractive photoproduction appears

to produce only 3S_1 rather than 3D_1 configurations, suggesting that the excitation of internal angular momenta in the $q\bar{q}$ system is suppressed. If this is a guide to what happens with an initial pomeron “beam” in place of a photon, then one may expect that in this kinematic region the $^3P_{0,2} q\bar{q}$ will be disfavoured relative to their glueball counterparts for which these J^{PC} can be realised in S -wave.

The kinematics and experimental triggers cannot access this “ideal” situation and require \mathbf{p}'_T and \mathbf{q}'_T to be non-zero. When the \mathbf{p}'_T and \mathbf{q}'_T are co-moving and of equal magnitude such that $dP_T \rightarrow 0$, they tend to produce an overall transverse boost of the meson R but with limited relative (internal) momentum: the resulting configuration for R will be strongly coupled to an S -state. By contrast, when the \mathbf{p}'_T and \mathbf{q}'_T are equal in magnitude but anti-aligned (so dP_T is large) then there can be significant relative l_T ($\sim dP_T$) within R . Note that in the laboratory frame R is moving overall with large p_L and that excitation of the l_T degree of freedom corresponds to P -wave (and higher orbitals) in the static limit. Thus by making the selection on data that $dP_T \rightarrow 0$, there is the possibility that $q\bar{q}$ with $J^{PC} = 0^{++}, 1^{++}, 2^{++}$ (which are all P -wave composites) will be suppressed relative to glueballs (or at least, relative to S -wave bound states of bosons with these J^{PC}). In effect, the Bialas-Landshoff topology encounters the penalty of mismatched p_L , which disfavours exclusive meson production at large M_R ; the alternate topology dilutes this problem in p_L but in p_T it remains. It is this which is varied via dP_T and which can govern the relative importance of S and P (or higher) wave states.

If this is realised then we expect $f_1(1285)$, $f_2(1270)$ inter alia to be suppressed as $dP_T \rightarrow 0$; we expect $f_0(^3P_0) q\bar{q}$ to be suppressed similarly whereas $f_0(1500) \equiv gg$ or $f_0(980) \equiv K\bar{K}$ would be able to survive. Conversely, at larger dP_T the production of gg and $q\bar{q}$ can be competitive, their relative production rates being dependent on their detailed internal wavefunctions and the relative importance of the collinear versus asymmetric (hard gluon) production mechanisms.

The above intuitive picture is at best only a first sketch of the full dynamics but at least it provides a starting point that is qualitatively consistent with the pattern of the LL and LR topologies. Intuitively one expects that the LL configuration will contain a large

sample with comparatively small relative transverse momentum and hence $dP_T \rightarrow 0$ favouring the glueballs. In contrast, the LR topology will have a tendency for rather larger relative transverse momentum, thereby necessitating greater momentum transfer in the exclusive meson production vertex; thus for this case one will expect both gg or $q\bar{q}$ production to occur. The relative emergence of the glueball candidates compared to the established $f_1(1285) q\bar{q}$ in Fig. 1 are in accord with this. However, if it is the dP_T variable that underpins the $LL - LR$ effect, then there should be a more marked effect when the data are selected directly as a function of $dP_T = |\mathbf{p}'_T - \mathbf{q}'_T|$. Accordingly we have done so and present the results for the 4π channel in Fig. 3.

The $dP_T \geq 0.5$ GeV (Fig. 3a) is similar to the original LR sample as expected. The sample with $0.2 \text{ GeV} \leq dP_T \leq 0.5$ GeV (Fig. 3b) shows the $f_1(1285)$ becoming suppressed and a sharpening of the $f_0(1500)$ and $f_2(1900)$ structures. However, the most dramatic effect is seen in the $dP_T \leq 0.2$ GeV sample (Fig. 3c) where the $f_1(1285)$, a $q\bar{q}$ state, has essentially disappeared while the $f_0(1500)$ and $f_2(1900)$ structures have become more clear. (This is driven by $dP_T \rightarrow 0$ and is not an artifact of Bose symmetry, as might have occurred if the pomeron-photon analogy were exact: if we select $t_1 \neq t_2$, the $f_1(1285)$ still disappears as $dP_T \rightarrow 0$.) These surviving structures have been identified as glueball candidates: the $f_0(1500)$ is motivated by lattice QCD while the $f_2(1900)$ is noted to have the right mass to lie on the pomeron trajectory [17].

The $f_0(1500)$ is rather clean and appears at $dP_T \rightarrow 0$ with a shape and mass that are not inconsistent with what is seen in $p\bar{p}$ annihilation. This is in contrast to the full data sample of the present experiment where this state interfered with the $f_0(1370)$ and was shifted to a lower mass (~ 1440 MeV) [6] and with a much narrower width (~ 60 MeV). The emergence in Fig. 2c of a more canonical $f_0(1500)$ [7] suggests, at least implicitly, that the $f_0(1370) q\bar{q}$ [18] state has become suppressed as $dP_T \rightarrow 0$ while the (gg candidate) $f_0(1500)$ has survived. It is important that experiments now verify if this is indeed the case.

Similar cuts have been applied to the $\pi\pi$, $K\bar{K}$ and $K\bar{K}\pi$ data (see the following paper [1]). The $f_1(1285)$ and $f_1(1420)$ are seen in the channel $K\bar{K}\pi$ when $dP_T > 0.5$ GeV but vanish when $dP_T \rightarrow 0$

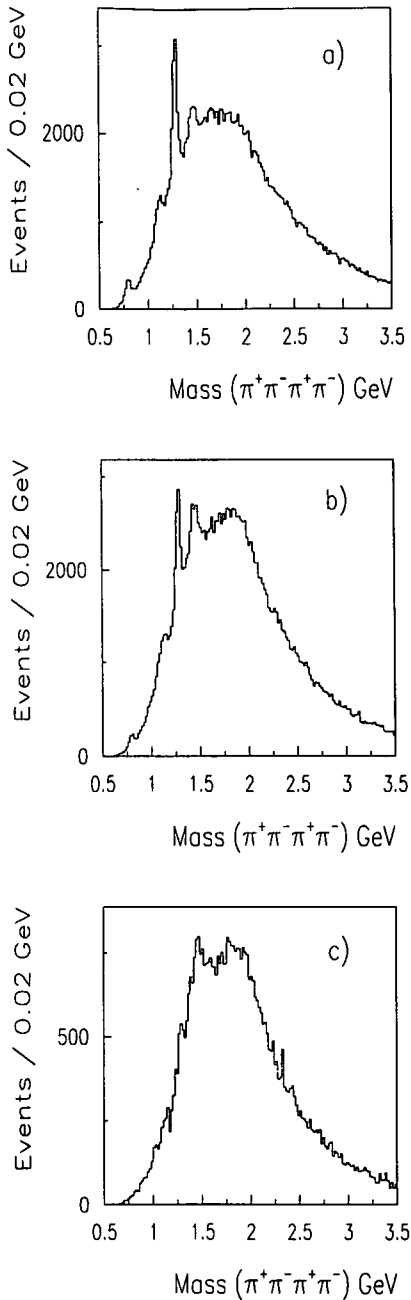


Fig. 3. The 4π mass spectra (i) With $dP_T > 0.5$ GeV exhibiting a clear $f_1(1285)$; (ii) $0.2 < dP_T < 0.5$ GeV (iii) $dP_T < 0.2$ GeV where the $f_1(1285)$ has disappeared while the $f_0(1500)$ is seen more clearly.

in line with $^3P_1 q\bar{q}$. We note that there are no 1^{++} resonances visible in this limit, in line with lattice QCD which predicts that there are no 1^{++} glueballs below ~ 3.5 GeV [19]. In the $\pi\pi$ channel we see the $f_2(1270)$ when $dP_T > 0.5$ GeV. This vanishes as $dP_T \rightarrow 0$ as expected for $^3P_2 q\bar{q}$. The survival of $f_0(980)$ is significant and we suggest that this shows its affinity for coupling via S -wave bosons. This could be due to a gg presence or to $K\bar{K}$ in its wavefunction [20,21]; at the present level of analysis we are unable to distinguish between these alternatives.

Summarising, we have stumbled upon a remarkable feature of central meson production that does not appear to have been noticed previously. Although its extraction via the dP_T cut was inspired by intuitive arguments following the observation of an $LL - LR$ asymmetry, we have no simple dynamical explanation. Nonetheless, the empirical message is dramatic enough to stand alone and thereby we suggest that a systematic study of meson production as a function of $dP_T \equiv |\mathbf{p}'_T - \mathbf{q}'_T|$ holds special promise for isolating the systematics of meson production in the central region and in filtering $q\bar{q}$ mesons from those with significant *boson-boson* content. The latter include $K\bar{K}$ molecular bound states (or $s\bar{s}$ states with significant $K\bar{K}$ component in the wavefunction), *pomeron-pomeron* states and *glueballs*. Our selection procedure will need to be tested further in future experiments in order to determine the extent of its empirical validity. In turn we hope thereby that its dynamical foundations may be put on a sounder footing and the filtering of glueballs be made a practical reality.

F.E.C. is partially supported by the European Community Human Mobility Program Eurodafne, Contract CHRX-CT92-0026 and is grateful to the WA102 Collaboration for this interaction.

References

- [1] D. Barberis et al., WA102 Collaboration, December 1996.
- [2] F.E. Close, Proc. LEAP96, hep-ph/9610426
- [3] R. Landua, Proc. XXVIII Int. Conf. High Energy Physics, Warsaw, July 1996.
- [4] G. Bali et al. (UKQCD), Phys. Lett. B 309 (1993) 378; D. Weingarten, hep-lat/9608070; J. Sexton et al., Phys. Rev. Lett. 75 (1995) 4563; F.E. Close and M.J. Teper, On the lightest Scalar Glueball,

- Rutherford Appleton Laboratory report no. RAL-96-040;
Oxford University report no. OUP-96-35P
- [5] V.V. Anisovich et al., *B* 323 (1994) 233;
C. Amsler et al., *Phys. Lett. B* 342 (1994) 433; *B* 291 (1992) 347; *B* 340 (1994) 259;
D.V. Bugg et al., *Phys. Lett. B* 353 (1995) 378;
D. Alde et al., *Phys. Lett. B* 201 (1988) 160.
- [6] F. Antinori et al., WA91 Collaboration, *Phys. Lett. B* 353 (1995) 589.
- [7] Particle Data Group, *Phys. Rev. D* 54 (1996) 1.
- [8] D. Robson, *Nucl. Phys. B* 130 (1977) 328;
F.E. Close, *Rep. Prog. Phys.* 51 (1988) 833.
- [9] F.E. Low *Phys. Rev. D* 12 (1975) 163;
S. Nussinov *Phys. Rev. D* 14 (1976) 246;
P.V. Landshoff and O. Nachtmann, *Z. Phys. C* 35 (1987) 405;
A. Donnachie and P.V. Landshoff, *Nucl. Phys. B* 311 (1988) 509;
A. Bialas and P.V. Landshoff *Phys. Lett. B* 256 (1991) 540.
- [10] D. Barberis et al., WA91 Collaboration, *Phys. Lett. B* 388 (1996) 853.
- [11] G. Gutierrez, talk at LEAP96 (unpublished)
- [12] A. Breakstone et al., *Z. Phys. C* 48 (1990) 569.
- [13] G.P. Lepage, in: *Particles and Fields*, Vol. 2, eds. A.Z. Capri and A.N. Kamal (Plenum, New York, 1983) p. 83;
S.J. Brodsky, in: *Particles and Fields*, Vol. 2, eds. A.Z. Capri and A.N. Kamal (Plenum, New York, 1983) p.143.
- [14] H.J. Weber, *Ann. Phys.* 177 (1987) 38;
Z. Dziembowski, *Phys. Rev. D* 37 (1988) 768.
- [15] S.J. Brodsky and G. Farrar, *Phys. Rev. Lett.* 31 (1973) 1153.
- [16] M.R. Pennington (private communication);
N. Brown and M.R. Pennington *Phys. Rev. D* 38 (1988) 2266.
- [17] P.V. Landshoff, private communication.
S. Abatzis et al *Phys. Lett. B* 324 (1994) 529.
- [18] C. Amsler and F.E. Close, *Phys. Lett. B* 353 (1995) 385;
Phys. Rev. D 53 (1996) 295.
- [19] C. Michael and M. Teper, *Nucl. Phys. B* 305 (1988) 453;
G.S. Bali et al (UKQCD) *Phys. Lett. B* 309 (1993) 378.
- [20] J. Weinstein and N. Isgur, *Phys. Rev. D* 27 (1983) 588.
- [21] N. Tornqvist, *Z. Phys. C* 68 (1995) 647.

PHYSICS LETTERS B

Instructions to Authors (short version)

(A more detailed version of these instructions is published in the preliminary pages to each volume.)

Submission of papers

Manuscripts (one original + two copies), accompanied by a covering letter, should be sent to one of the Editors indicated on page 2 of the cover.

Original material. By submitting a paper for publication in Physics Letters B the authors imply that the material has not been published previously nor has been submitted for publication elsewhere and that the authors have obtained the necessary authority for publication.

Refereeing. Submitted papers will be refereed and, if necessary, authors may be invited to revise their manuscript. If a submitted paper relies heavily on unpublished material, it would be helpful to have a copy of that material for the use of the referee.

Types of contributions

Letters. The total length of the paper should preferably not exceed six journal pages, equivalent to ten typewritten pages with double spacing, including the list of authors, abstract, references, figure captions and three figures. In the case that more figures are required, the text should be shortened accordingly. As proofs will *not* be sent, authors should check their papers carefully before submission.

Manuscript preparation

All manuscripts should be written in good English. The paper copies of the text should be prepared with double line spacing and wide margins, on numbered sheets. See notes opposite on electronic version of manuscripts.

Structure. Please adhere to the following order of presentation: Article title, Author(s), Affiliation(s), Abstract, Classification codes and keywords, Main text, Acknowledgements, Appendices, References, Figure captions, Tables.

Corresponding author. The name, complete postal address, telephone and fax numbers and the e-mail address of the corresponding author should be given on the first page of the manuscript.

Classification codes/keywords. Please supply one to four classification codes (PACS and/or MSC) and up to six keywords of your own choice that describe the content of your article in more detail.

References. References to other work should be consecutively numbered in the text using square brackets and listed by number in the Reference list. Please refer to the more detailed instructions for examples.

Illustrations

Illustrations should also be submitted in triplicate: one master set and two sets of copies. The *line drawings* in the master set should be original laser printer or plotter output or drawn in black india ink, with careful lettering, large enough (3–5 mm) to remain legible after reduction for printing. The *photographs* should be originals, with somewhat more contrast than is required in the printed version. They should be unmounted unless part of a composite figure. Any scale markers should be inserted on the photograph, not drawn below it.

Colour plates. Figures may be published in colour, if this is judged essential by the Editor. The Publisher and the author will each bear part of the extra costs involved. Further information is available from the Publisher.

After acceptance

Notification. You will be notified by the Editor of the journal of the acceptance of your article and invited to supply an electronic version of the accepted text, if this is not already available.

Copyright transfer. You will be asked to transfer the copyright of the article to the Publisher. This transfer will ensure the widest possible dissemination of information.

No proofs. In order to speed up publication, all proofreading will be done by the Publisher and proofs are *not* sent to the author(s).

Electronic manuscripts

The Publisher welcomes the receipt of an electronic version of your accepted manuscript (preferably encoded in LaTeX). If you have not already supplied the final, revised version of your article (on diskette) to the journal Editor, you are requested herewith to send a file with the text of the accepted manuscript directly to the Publisher by e-mail or on diskette (allowed formats 3.5" or 5.25" MS-DOS, or 3.5" Macintosh) to the address given below. Please note that no deviations from the version accepted by the Editor of the journal are permissible without the prior and explicit approval by the Editor. Such changes should be clearly indicated on an accompanying printout of the file.

Author benefits

No page charges. Publishing in Physics Letters B is free.

Free offprints. The corresponding author will receive 50 offprints free of charge. An offprint order form will be supplied by the Publisher for ordering any additional paid offprints.

Discount. Contributors to Elsevier Science journals are entitled to a 30% discount on all Elsevier Science books.

Contents Alert. Physics Letters B is included in Elsevier's pre-publication service Contents Alert.

Further information (after acceptance)

Elsevier Science B.V., Physics Letters B
Issue Management
Physics and Materials Science
P.O. Box 2759, 1000 CT Amsterdam
The Netherlands
Tel.: + 31 20 485 2634
Fax: + 31 20 485 2319
E-mail: NHPDESKED@ELSEVIER.NL



North-Holland, an imprint of Elsevier Science

PHYSICS LETTERS B

Physics Letters B 397 (1997) 333–338

Glueball- $q\bar{q}$ filter in central hadron production

Frank E. Close^{a,1}, Andrew Kirk^{b,2}

^a *Rutherford Appleton Laboratory, Chilton, Didcot, OX11 0QX, UK*

^b *School of Physics and Space Research, Birmingham University, Birmingham, UK*

Received 18 December 1996

Editor: K. Winter



ELSEVIER

PHYSICS LETTERS B

EDITORS

L. Alvarez-Gaumé, Theory Division, CERN, CH-1211 Geneva 23, Switzerland,

E-mail address: Alvarez@NXTH04.CERN.CH

Theoretical High Energy Physics (General Theory) from the Iberian Peninsula, France, Switzerland, Italy, Malta, Austria, Hungary, Balkan countries and Cyprus

J.-P. Blaizot, Service de Physique Théorique, Orme des Merisiers, C.E.A.-Saclay, F-91191 Gif-sur-Yvette Cedex, France,

E-mail address: plb(@)SPHT.SACLAY.CEA.FR

Theoretical Nuclear Physics

M. Dine, Physics Department, University of California at Santa Cruz, Santa Cruz, CA 95064, USA,

E-mail address: Dine@SCIPP.UCSC.EDU

Theoretical High Energy Physics from countries outside Europe

R. Gatto, Theory Division, CERN, CH-1211 Geneva 23, Switzerland,

E-mail address: Raoul.Gatto@CERN.CH

Theoretical High Energy Physics (Particle Phenomenology) from the Iberian Peninsula, France, Switzerland, Italy, Malta, Austria, Hungary, Balkan countries and Cyprus

H. Georgi, Department of Physics, Harvard University, Cambridge, MA 02138, USA,

E-mail address: Georgi@PHYSICS.HARVARD.EDU

Theoretical High Energy Physics from countries outside Europe

Aims and Scope

Physics Letters B ensures the rapid publication of letter-type communications in the fields of Nuclear Physics/Intermediate Energy Physics, High Energy Physics and Field Theory.

Abstracted/indexed in:

Current Contents: Physical, Chemical & Earth Sciences; INSPEC.

Subscription Information 1997

PHYSICS LETTERS A (ISSN 0375-9601) and PHYSICS LETTERS B (ISSN 0370-2693) will each be published weekly. For 1997 13 volumes, volumes 224–236 (78 issues altogether) of Physics Letters A have been announced. For 1997 26 volumes, volumes 390–415 (104 issues altogether) of Physics Letters B have been announced. The subscription prices for these volumes are available upon request from the Publisher. PHYSICS REPORTS (ISSN 0370-1573) will be published approximately weekly. For 1997 14 volumes, volumes 277–290 (84 issues altogether) of Physics Reports have been announced. The subscription price for these volumes is available upon request from the Publisher.

A combined subscription to the 1997 issues of Physics Letters A, Physics Letters B and Physics Reports is available at a reduced rate.

Subscriptions are accepted on a prepaid basis only and are entered on a calendar year basis. Issues are sent by SAL (Surface Air Lifted) mail wherever this service is available. Airmail rates are available upon request.

For orders, claims, product enquiries (no manuscript enquiries) please contact the Customer Support Department at the Regional Sales Office nearest to you:

U.S. mailing notice – Physics Letters B (ISSN 0370-2693) is published weekly by Elsevier Science B.V., P.O. Box 211, 1000 AE Amsterdam, The Netherlands. Annual subscription price in the USA is US\$ 6917.00 (valid in North, Central and South America only), including air speed delivery. Periodicals postage paid at Jamaica, NY 11431.

USA POSTMASTERS: Send address changes to Physics Letters B, Publications Expediting, Inc., 200 Meacham Avenue, Elmont, NY 11003.

AIRFREIGHT AND MAILING in the USA by Publications Expediting, Inc., 200 Meacham Avenue, Elmont, NY 11003.

© The paper used in this publication meets the requirements of ANSI/NISO Z39.48-1992 (Permanence of Paper).

W. Haxton, Institute for Nuclear Theory, Box 351550, University of Washington, Seattle, WA 98195-1550, USA,

E-mail address: plb@PHYS.WASHINGTON.EDU

Theoretical Nuclear Physics

P.V. Landshoff, Department of Applied Mathematics and Theoretical Physics, University of Cambridge, Silver Street, Cambridge CB3 9EW, UK,

E-mail address: P.V.Landshoff@DAMTP.CAM.AC.UK

Theoretical High Energy Physics from Ireland, United Kingdom, Benelux, Scandinavian countries, German Federal Republic, Poland, Czech Republic, Slovak Republic, Baltic countries and the Commonwealth of Independent States

L. Montanet, CERN, CH-1211 Geneva 23, Switzerland,

E-mail address: Lucien.Montanet@CERN.CH

Experimental High Energy Physics

J.P. Schiffer, Argonne National Laboratory, 9700 South Cass Avenue, Argonne, IL 60439, USA,

E-mail address: Schiffer@ANL.GOV

Experimental Nuclear Physics (Heavy Ion Physics, Intermediate Energy Nuclear Physics)

R.H. Siemssen, KVI, University of Groningen, Zernikelaan 25, NL-9747 AA Groningen, The Netherlands,

E-mail address: Siemssen@KVI.NL

Experimental Nuclear Physics (Heavy Ion Physics, Low Energy Nuclear Physics)

K. Winter, CERN, CH-1211 Geneva 23, Switzerland

E-mail address: Klaus.Winter@CERN.CH

Experimental High Energy Physics

New York, Elsevier Science, P.O. Box 945, New York, NY 10159-0945, USA. Tel: +1 212 633 3730, [Toll Free number for North American customers: 1 888 4ES INFO (437 4636)], Fax: +1 212 633 3680, E-mail: usinfo@elsevier.com

Amsterdam, Elsevier Science, P.O. Box 211, 1000 AE Amsterdam, The Netherlands. Tel: +31 20 485 3757; Fax: +31 20 485 3432, E-mail: nlinfo@elsevier.nl

Tokyo, Elsevier Science, 9-15, Higashi-Azabu 1-chome, Minato-ku, Tokyo 106, Japan. Tel: +81 3 5561 5033; Fax: +81 3 5561 5047, E-mail: kyf04035@niftyserve.or.jp

Singapore, Elsevier Science, No. 1 Temasek Avenue, #17-01 Millenia Tower, Singapore 039192. Tel: +65 434 3727; Fax: +65 337 2230, E-mail: asiainfo@elsevier.com.sg

Claims for issues not received should be made within six months of our publication (mailing) date.

Advertising Offices

International: Elsevier Science, Advertising Department, The Boulevard, Langford Lane, Kidlington, Oxford OX5 1GB, UK. Tel: +44 1865 843565; Fax: +44 1865 843976.

USA and Canada: Weston Media Associates, Dan Lipner, P.O. Box 1110, Greens Farms, CT 06436-1110, USA. Tel: +1 203 261 2500; Fax: +1 203 261 0101.

Japan: Elsevier Science Japan, Marketing Services, 1-9-15 Higashi-Azabu, Minato-ku, Tokyo 106, Japan. Tel: +81 3 5561 5033; Fax: +81 3 5561 5047.



Glueball- $q\bar{q}$ filter in central hadron production

Frank E. Close^{a,1}, Andrew Kirk^{b,2}

^a Rutherford Appleton Laboratory, Chilton, Didcot, OX11 0QX, UK

^b School of Physics and Space Research, Birmingham University, Birmingham, UK

Received 18 December 1996

Editor: K. Winter

Abstract

Glueballs and $q\bar{q}$ of the same J^{PC} are distinguishable due to their boson versus fermion internal structure. This leads to a different topology for central production of glueballs and $q\bar{q}$. We apply this test to data from the WA102 experiment and find that the $f_0(1500)$ and the $f_2(1900)$ show behaviour consistent with glueballs and opposite to that expected if they were pure $q\bar{q}$ states. © 1997 Elsevier Science B.V.

We propose a method for filtering glueballs with $J^{PC} = (0, 1, 2)^{++}$ from their $^3P_{(J=0,1,2)}$ $q\bar{q}$ counterparts when they are produced in the central region of diffractive processes. The derivation is intuitive rather than rigorous, yet its application to data from the CERN WA102 experiment turns out to reveal some remarkable empirical regularities [1].

These matters are timely given the considerable current interest in the possibility that the lightest glueball is a scalar with a mass of about 1.5 GeV [2,3]. This is motivated both by predictions of lattice QCD [4] and by emerging hints in various experiments where glueball production has historically been expected to be favoured [3,5–7]. One such mechanism is “central production” where the produced mesons have no memory of the flavour of the initiating hadrons [8] and are excited via the gluonic fields of the “pomeron” [9]. Consequently it has been anticipated that production of glueballs may be especially favoured in such processes.

However, such anticipation requires some caution.

First there is the well known problem that non-diffractive transfer of flavour (Regge exchange) can contaminate this simple picture and lead to the appearance of $q\bar{q}$ mesons in the central region. Furthermore, even for the diffractive production, momentum transfer between the gluons of the pomeron and the aligned constituents of the produced meson may lead to either gg or $q\bar{q}$ states. The former may be favoured relative to $q\bar{q}$ production due to colour factors but unless further cuts are made to enhance the gg signal, the appearance of novel states in central production is not of itself definitive evidence for a glueball.

However, there has been an interesting development with the recent empirical observation [10] that the states seen in central production are a function of the topology, and depend on whether events are classified as either LL or LR (“left left” or “left right” in the sense of how the beams scatter into the final state relative to the initial direction). Specifically, when the two beams scatter into opposing hemispheres (LR as defined in Ref. [10]) the $f_1(1285)$ 3P_1 $q\bar{q}$ state is clearly

¹ E-mail: fec@v2.rl.ac.uk

² E-mail: ak@hep.ph.bham.ac.uk

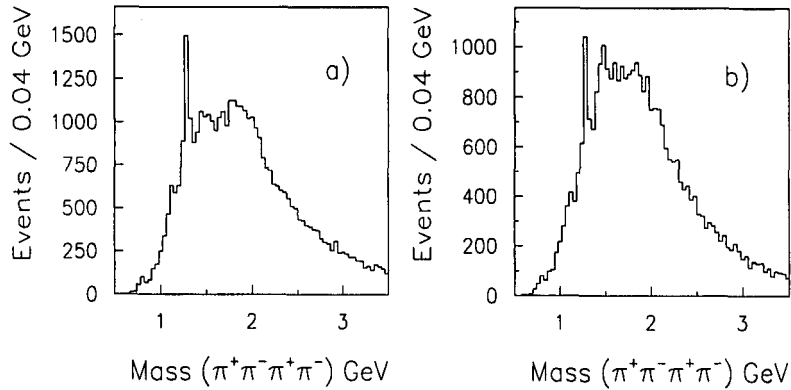


Fig. 1. The 4π mass spectra from Ref. 10 for (a) LR and (b) LL topologies.

visible (Fig. 1a) whereas in the same side configuration (LL) it is less prominent relative to the structures in the 1.4–2.0 GeV mass range (fig 1b). Such discrimination has also been seen for the $f_2(1270)$ 3P_2 $q\bar{q}$ state relative to the enigmatic $f_0(980)$ in the $\pi\pi$ channel [10]. Similar phenomena have recently been noted also in Fermilab data [11] and, in retrospect, at the ISR [12].

This phenomenon led us to reconsider the mechanisms for the production of gg and $q\bar{q}$ in the central region. Our notation is that in the centre of mass frame the initial protons have four-vectors

$$p = (P + M^2/2P; p_T = 0, p_L = P),$$

$$q = (P + M^2/2P; q_T = 0, q_L = -P),$$

the outgoing protons having respectively momenta

$$p' \equiv (p'_L = x_a p; p'_T), \quad q' \equiv (q'_L = x_b q; q'_T)$$

and $x_F \equiv x_a - x_b$. The data have historically been presented as a function of $M_R^2 \sim (1 - x_a)(1 - x_b)s$ with some separation as a function of

$$t_a \sim -\frac{(p'_T)^2}{1 - x_a}; \quad t_b \sim -\frac{(q'_T)^2}{1 - x_b}.$$

The topological separation into LL and LR is novel and independent of the magnitudes of $t_{a,b}$ [10]. We shall suggest that it is driven primarily by the variable $dP_T \equiv |p'_T - q'_T|$ and that gg configurations are enhanced in kinematic configurations where the gluons can flow “directly” into the final state with only small momentum transfer, in particular when $dP_T \rightarrow 0$.

A major uncertainty when analysing these processes is the modelling of the pomerons’ interactions. While it is now rather generally accepted that a pomeron is a colour singlet gluonic system (see, e.g., Ref. [9]), an unknown feature is the topology of the individual constituent gluons in production processes. For example, Bialas and Landshoff [9] consider Higgs production by double pomeron exchange by treating each pomeron as a colour singlet system of two gluons; one gluon is “passive” and serves primarily to ensure overall colour singlet exchange (Fig. 2a) while the other gluon in each pomeron transfers (longitudinal) momentum which stimulates the Higgs production. This topology has some problems for the exclusive production of $q\bar{q}$ or a glueball. While it may be applicable to the pointlike Higgs, for the exclusive production of a spatially extended hadron, which is the case of interest in the present paper, one anticipates that it may be suppressed. The essential reason is the large rescattering that is required to turn the large relative longitudinal momenta of the “active” gluons into co-moving constituents necessary for the exclusive production of a composite hadron.

Specifically, consider the meson, R , to have an overall longitudinal momentum $P \equiv P_3$ and to be made of constituents (e.g. gluons or quarks) of mass m . The four momentum p^μ of a particle with mass m may be written

$$p^\mu = (p^+ \equiv p_0 + p_3; p^- = \frac{m^2 + p_T^2}{p^+}; p_T).$$

The momentum of the meson R is shared among its

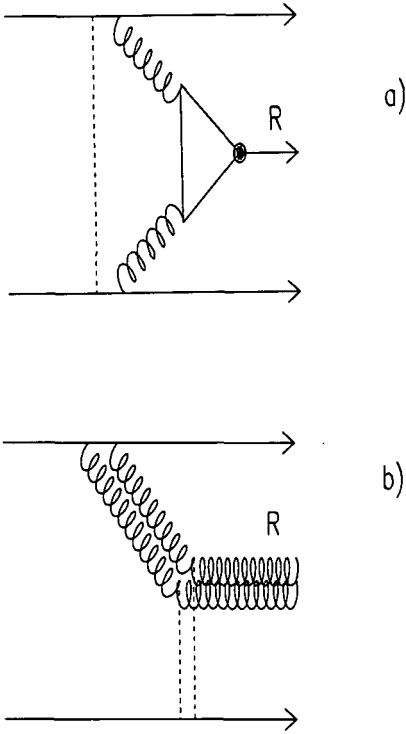


Fig. 2. (a) Two gluons with large p_L fuse to make a meson R . (b) Diffractive scattering of a gluonic pomeron to produce a glueball.

constituents, the j -th constituent carrying a fraction $x_j = p_j^+ / P^+$ where the total (time-like) momentum $P^+ = \sum_j p_j^+$ is conserved, $\sum_j x_j = 1$. The relative momentum of the j -th constituent, $l_j = p_j - x_j P$, is space like with $l^2 = -l_T^2$ and $l^+ = 0$. For a meson that is an S -wave state in its rest frame, the light cone wavefunction will have a structure that may be parametrised in the form [13]

$$\phi_{LC}(x, l_T) \sim \exp\left(-\sum_j \frac{(l_T^2 + m^2) R^2}{x_j}\right),$$

where the sum is over the constituents, j , and R is a measure of the hadron's size. (Excitation of the l_T degree of freedom corresponds to P -wave (and higher orbitals) in the static limit [14].) For a system of two equal mass constituents with $\delta x \equiv x_1 - x_2$, the structure of the exponent becomes

$$\exp\left(-\frac{4(l_T^2 + m^2) R^2}{1 - \delta x^2}\right)$$

which is suppressed if l_T is large or if $\delta x \rightarrow 1$. This is essentially the well known form factor suppression of asymmetric configurations [13,15] and becomes increasingly significant as M_R becomes large. It is manifested empirically in the sharp cut off of the M_R distribution in central hadron production (as for example when $M_R > 2$ GeV in Fig. 1 even though the kinematic reach of the experiment goes beyond this).

The above remarks are well known for the production of spatially extended $q\bar{q}$ and will also be expected to apply to the production of glueballs. However, in addition to these common features there can be generic differences between the production of glueballs and $q\bar{q}$ of the same J^{PC} . For example, a qualitative difference may result if glueballs are more pointlike than $q\bar{q}$ or have a hard gluonic component in their wavefunction, either of which would relatively enhance their production. The hard rescattering of $gg \rightarrow gg$ rather than $gg \rightarrow q\bar{q}$ is also aided by colour factors. There is also the possibility that the more singular behaviour of propagators for confined gluons relative to quarks at zero momentum [16] may lead to different production rates for $q\bar{q}$ and gg as a function of the kinematical variables, for example in dP_T and thereby in LL - LR .

The above description of the pomeron is an extreme case in the sense that its gluons are treated asymmetrically. The exclusive meson production then arises when one "hard" gluon from one pomeron fuses with a gluon from the other pomeron. These two gluons have a large relative p_L and in consequence are much separated in δx ; this disfavors exclusive production. An alternative extreme, which can reduce this penalty, is where the two gluons within a single pomeron cooperate in being strongly aligned, both in p_L and p_T . In this case we can regard the initial proton beam as a source of pomerons, analogous to the way that an electron beam is a source of photons. Consider the process in the laboratory frame: the pomerons then scatter "diffractively" in the colour singlet gluonic field of the target (Fig. 2b) analogous to the diffractive photoproduction of vector mesons. With the pomeron having $C = +$ we anticipate that this mechanism will favourably produce $J^{PC} = 0^{++}, 2^{++}$ glueballs (which are the lightest according to lattice QCD). The pomeron can in principle also convert into $J^{PC} = 0^{++}, 2^{++}$ $q\bar{q}$ mesons in this process analogous to the photon turning into $J^{PC} = 1^{--}$ $q\bar{q}$. However, for t and $q'_T \rightarrow 0$, diffractive photoproduction appears

to produce only 3S_1 rather than 3D_1 configurations, suggesting that the excitation of internal angular momenta in the $q\bar{q}$ system is suppressed. If this is a guide to what happens with an initial pomeron “beam” in place of a photon, then one may expect that in this kinematic region the $^3P_{0,2} q\bar{q}$ will be disfavoured relative to their glueball counterparts for which these J^{PC} can be realised in S -wave.

The kinematics and experimental triggers cannot access this “ideal” situation and require \mathbf{p}'_T and \mathbf{q}'_T to be non-zero. When the \mathbf{p}'_T and \mathbf{q}'_T are co-moving and of equal magnitude such that $dP_T \rightarrow 0$, they tend to produce an overall transverse boost of the meson R but with limited relative (internal) momentum: the resulting configuration for R will be strongly coupled to an S -state. By contrast, when the \mathbf{p}'_T and \mathbf{q}'_T are equal in magnitude but anti-aligned (so dP_T is large) then there can be significant relative l_T ($\sim dP_T$) within R . Note that in the laboratory frame R is moving overall with large p_L and that excitation of the l_T degree of freedom corresponds to P -wave (and higher orbitals) in the static limit. Thus by making the selection on data that $dP_T \rightarrow 0$, there is the possibility that $q\bar{q}$ with $J^{PC} = 0^{++}, 1^{++}, 2^{++}$ (which are all P -wave composites) will be suppressed relative to glueballs (or at least, relative to S -wave bound states of bosons with these J^{PC}). In effect, the Bialas-Landshoff topology encounters the penalty of mismatched p_L , which disfavours exclusive meson production at large M_R ; the alternate topology dilutes this problem in p_L but in p_T it remains. It is this which is varied via dP_T and which can govern the relative importance of S and P (or higher) wave states.

If this is realised then we expect $f_1(1285)$, $f_2(1270)$ inter alia to be suppressed as $dP_T \rightarrow 0$; we expect $f_0^3 P_0 q\bar{q}$ to be suppressed similarly whereas $f_0(1500) \equiv gg$ or $f_0(980) \equiv K\bar{K}$ would be able to survive. Conversely, at larger dP_T the production of gg and $q\bar{q}$ can be competitive, their relative production rates being dependent on their detailed internal wavefunctions and the relative importance of the collinear versus asymmetric (hard gluon) production mechanisms.

The above intuitive picture is at best only a first sketch of the full dynamics but at least it provides a starting point that is qualitatively consistent with the pattern of the LL and LR topologies. Intuitively one expects that the LL configuration will contain a large

sample with comparatively small relative transverse momentum and hence $dP_T \rightarrow 0$ favouring the glueballs. In contrast, the LR topology will have a tendency for rather larger relative transverse momentum, thereby necessitating greater momentum transfer in the exclusive meson production vertex; thus for this case one will expect both gg or $q\bar{q}$ production to occur. The relative emergence of the glueball candidates compared to the established $f_1(1285) q\bar{q}$ in Fig. 1 are in accord with this. However, if it is the dP_T variable that underpins the $LL - LR$ effect, then there should be a more marked effect when the data are selected directly as a function of $dP_T = |\mathbf{p}'_T - \mathbf{q}'_T|$. Accordingly we have done so and present the results for the 4π channel in Fig. 3.

The $dP_T \geq 0.5$ GeV (Fig. 3a) is similar to the original LR sample as expected. The sample with $0.2 \text{ GeV} \leq dP_T \leq 0.5 \text{ GeV}$ (Fig. 3b) shows the $f_1(1285)$ becoming suppressed and a sharpening of the $f_0(1500)$ and $f_2(1900)$ structures. However, the most dramatic effect is seen in the $dP_T \leq 0.2$ GeV sample (Fig. 3c) where the $f_1(1285)$, a $q\bar{q}$ state, has essentially disappeared while the $f_0(1500)$ and $f_2(1900)$ structures have become more clear. (This is driven by $dP_T \rightarrow 0$ and is not an artifact of Bose symmetry, as might have occurred if the pomeron-photon analogy were exact: if we select $t_1 \neq t_2$, the $f_1(1285)$ still disappears as $dP_T \rightarrow 0$.) These surviving structures have been identified as glueball candidates: the $f_0(1500)$ is motivated by lattice QCD while the $f_2(1900)$ is noted to have the right mass to lie on the pomeron trajectory [17].

The $f_0(1500)$ is rather clean and appears at $dP_T \rightarrow 0$ with a shape and mass that are not inconsistent with what is seen in $p\bar{p}$ annihilation. This is in contrast to the full data sample of the present experiment where this state interfered with the $f_0(1370)$ and was shifted to a lower mass (~ 1440 MeV) [6] and with a much narrower width (~ 60 MeV). The emergence in Fig. 2c of a more canonical $f_0(1500)$ [7] suggests, at least implicitly, that the $f_0(1370) q\bar{q}$ [18] state has become suppressed as $dP_T \rightarrow 0$ while the (gg candidate) $f_0(1500)$ has survived. It is important that experiments now verify if this is indeed the case.

Similar cuts have been applied to the $\pi\pi$, $K\bar{K}$ and $K\bar{K}\pi$ data (see the following paper [1]). The $f_1(1285)$ and $f_1(1420)$ are seen in the channel $K\bar{K}\pi$ when $dP_T > 0.5 \text{ GeV}$ but vanish when $dP_T \rightarrow 0$

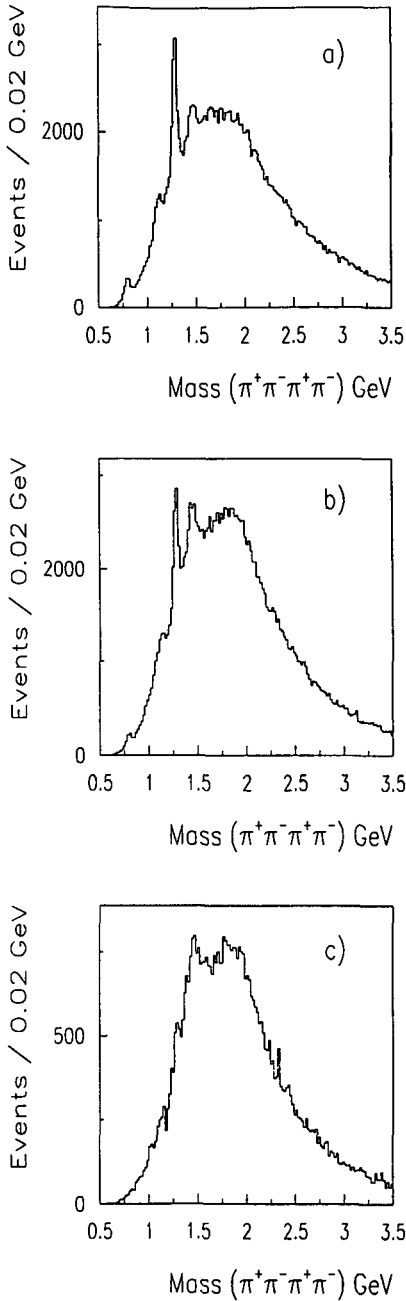


Fig. 3. The 4π mass spectra (i) With $dP_T > 0.5$ GeV exhibiting a clear $f_1(1285)$; (ii) $0.2 < dP_T < 0.5$ GeV (iii) $dP_T < 0.2$ GeV where the $f_1(1285)$ has disappeared while the $f_0(1500)$ is seen more clearly.

in line with $^3P_1 q\bar{q}$. We note that there are no 1^{++} resonances visible in this limit, in line with lattice QCD which predicts that there are no 1^{++} glueballs below ~ 3.5 GeV [19]. In the $\pi\pi$ channel we see the $f_2(1270)$ when $dP_T > 0.5$ GeV. This vanishes as $dP_T \rightarrow 0$ as expected for $^3P_2 q\bar{q}$. The survival of $f_0(980)$ is significant and we suggest that this shows its affinity for coupling via S -wave bosons. This could be due to a gg presence or to $K\bar{K}$ in its wavefunction [20,21]; at the present level of analysis we are unable to distinguish between these alternatives.

Summarising, we have stumbled upon a remarkable feature of central meson production that does not appear to have been noticed previously. Although its extraction via the dP_T cut was inspired by intuitive arguments following the observation of an $LL - LR$ asymmetry, we have no simple dynamical explanation. Nonetheless, the empirical message is dramatic enough to stand alone and thereby we suggest that a systematic study of meson production as a function of $dP_T \equiv |\mathbf{p}'_T - \mathbf{q}'_T|$ holds special promise for isolating the systematics of meson production in the central region and in filtering $q\bar{q}$ mesons from those with significant *boson-boson* content. The latter include $K\bar{K}$ molecular bound states (or $s\bar{s}$ states with significant $K\bar{K}$ component in the wavefunction), *pomeron-pomeron* states and *glueballs*. Our selection procedure will need to be tested further in future experiments in order to determine the extent of its empirical validity. In turn we hope thereby that its dynamical foundations may be put on a sounder footing and the filtering of glueballs be made a practical reality.

F.E.C. is partially supported by the European Community Human Mobility Program Eurodafne, Contract CHRX-CT92-0026 and is grateful to the WA102 Collaboration for this interaction.

References

- [1] D. Barberis et al., WA102 Collaboration, December 1996.
- [2] F.E. Close, Proc. LEAP96, hep-ph/9610426
- [3] R. Landua, Proc. XXVIII Int. Conf. High Energy Physics, Warsaw, July 1996.
- [4] G. Bali et al. (UKQCD), Phys. Lett. B 309 (1993) 378; D. Weingarten, hep-lat/9608070; J. Sexton et al., Phys. Rev. Lett. 75 (1995) 4563; F.E. Close and M.J. Teper, On the lightest Scalar Glueball,

- Rutherford Appleton Laboratory report no. RAL-96-040;
Oxford University report no. OUP-96-35P
- [5] V.V. Anisovich et al., *B* 323 (1994) 233;
C. Amsler et al., *Phys. Lett. B* 342 (1994) 433; *B* 291
(1992) 347; *B* 340 (1994) 259;
D.V. Bugg et al., *Phys. Lett. B* 353 (1995) 378;
D. Alde et al., *Phys. Lett. B* 201 (1988) 160.
- [6] F. Antinori et al., WA91 Collaboration, *Phys. Lett. B* 353
(1995) 589.
- [7] Particle Data Group, *Phys. Rev. D* 54 (1996) 1.
- [8] D. Robson, *Nucl. Phys. B* 130 (1977) 328;
F.E. Close, *Rep. Prog. Phys.* 51 (1988) 833.
- [9] F.E. Low *Phys. Rev. D* 12 (1975) 163;
S. Nussinov *Phys. Rev. D* 14 (1976) 246;
P.V. Landshoff and O. Nachtmann, *Z. Phys. C* 35 (1987)
405;
A. Donnachie and P.V. Landshoff, *Nucl. Phys. B* 311 (1988)
509;
A. Bialas and P.V. Landshoff *Phys. Lett. B* 256 (1991) 540.
- [10] D. Barberis et al., WA91 Collaboration, *Phys. Lett. B* 388
(1996) 853.
- [11] G. Gutierrez, talk at LEAP96 (unpublished)
- [12] A. Breakstone et al., *Z. Phys. C* 48 (1990) 569.
- [13] G.P. Lepage, in: *Particles and Fields*, Vol. 2, eds. A.Z. Capri
and A.N. Kamal (Plenum, New York, 1983) p. 83;
S.J. Brodsky, in: *Particles and Fields*, Vol. 2, eds. A.Z. Capri
and A.N. Kamal (Plenum, New York, 1983) p.143.
- [14] H.J. Weber, *Ann. Phys.* 177 (1987) 38;
Z. Dziembowski, *Phys. Rev. D* 37 (1988) 768.
- [15] S.J. Brodsky and G. Farrar, *Phys. Rev. Lett.* 31 (1973) 1153.
- [16] M.R. Pennington (private communication);
N. Brown and M.R. Pennington *Phys. Rev. D* 38 (1988)
2266.
- [17] P.V. Landshoff, private communication.
S. Abatzis et al *Phys. Lett. B* 324 (1994) 529.
- [18] C. Amsler and F.E. Close, *Phys. Lett. B* 353 (1995) 385;
Phys. Rev. D 53 (1996) 295.
- [19] C. Michael and M. Teper, *Nucl. Phys. B* 305 (1988) 453;
G.S. Bali et al (UKQCD) *Phys. Lett. B* 309 (1993) 378.
- [20] J. Weinstein and N. Isgur, *Phys. Rev. D* 27 (1983) 588.
- [21] N. Tornqvist, *Z. Phys. C* 68 (1995) 647.

PHYSICS LETTERS B

Instructions to Authors (short version)

(A more detailed version of these instructions is published in the preliminary pages to each volume.)

Submission of papers

Manuscripts (one original + two copies), accompanied by a covering letter, should be sent to one of the Editors indicated on page 2 of the cover.

Original material. By submitting a paper for publication in Physics Letters B the authors imply that the material has not been published previously nor has been submitted for publication elsewhere and that the authors have obtained the necessary authority for publication.

Refereeing. Submitted papers will be refereed and, if necessary, authors may be invited to revise their manuscript. If a submitted paper relies heavily on unpublished material, it would be helpful to have a copy of that material for the use of the referee.

Types of contributions

Letters. The total length of the paper should preferably not exceed six journal pages, equivalent to ten typewritten pages with double spacing, including the list of authors, abstract, references, figure captions and three figures. In the case that more figures are required, the text should be shortened accordingly. As proofs will *not* be sent, authors should check their papers carefully before submission.

Manuscript preparation

All manuscripts should be written in good English. The paper copies of the text should be prepared with double line spacing and wide margins, on numbered sheets. See notes opposite on electronic version of manuscripts.

Structure. Please adhere to the following order of presentation: Article title, Author(s), Affiliation(s), Abstract, Classification codes and keywords, Main text, Acknowledgements, Appendices, References, Figure captions, Tables.

Corresponding author. The name, complete postal address, telephone and fax numbers and the e-mail address of the corresponding author should be given on the first page of the manuscript.

Classification codes/keywords. Please supply one to four classification codes (PACS and/or MSC) and up to six keywords of your own choice that describe the content of your article in more detail.

References. References to other work should be consecutively numbered in the text using square brackets and listed by number in the Reference list. Please refer to the more detailed instructions for examples.

Illustrations

Illustrations should also be submitted in triplicate: one master set and two sets of copies. The *line drawings* in the master set should be original laser printer or plotter output or drawn in black india ink, with careful lettering, large enough (3–5 mm) to remain legible after reduction for printing. The *photographs* should be originals, with somewhat more contrast than is required in the printed version. They should be unmounted unless part of a composite figure. Any scale markers should be inserted on the photograph, not drawn below it.

Colour plates. Figures may be published in colour, if this is judged essential by the Editor. The Publisher and the author will each bear part of the extra costs involved. Further information is available from the Publisher.

After acceptance

Notification. You will be notified by the Editor of the journal of the acceptance of your article and invited to supply an electronic version of the accepted text, if this is not already available.

Copyright transfer. You will be asked to transfer the copyright of the article to the Publisher. This transfer will ensure the widest possible dissemination of information.

No proofs. In order to speed up publication, all proofreading will be done by the Publisher and proofs are *not* sent to the author(s).

Electronic manuscripts

The Publisher welcomes the receipt of an electronic version of your accepted manuscript (preferably encoded in LaTeX). If you have not already supplied the final, revised version of your article (on diskette) to the journal Editor, you are requested herewith to send a file with the text of the accepted manuscript directly to the Publisher by e-mail or on diskette (allowed formats 3.5" or 5.25" MS-DOS, or 3.5" Macintosh) to the address given below. Please note that no deviations from the version accepted by the Editor of the journal are permissible without the prior and explicit approval by the Editor. Such changes should be clearly indicated on an accompanying printout of the file.

Author benefits

No page charges. Publishing in Physics Letters B is free.

Free offprints. The corresponding author will receive 50 offprints free of charge. An offprint order form will be supplied by the Publisher for ordering any additional paid offprints.

Discount. Contributors to Elsevier Science journals are entitled to a 30% discount on all Elsevier Science books.

Contents Alert. Physics Letters B is included in Elsevier's pre-publication service Contents Alert.

Further information (after acceptance)

Elsevier Science B.V., Physics Letters B
Issue Management
Physics and Materials Science
P.O. Box 2759, 1000 CT Amsterdam
The Netherlands
Tel.: + 31 20 485 2634
Fax: + 31 20 485 2319
E-mail: NHPDESKED@ELSEVIER.NL



North-Holland, an imprint of Elsevier Science

PHYSICS LETTERS B

Physics Letters B 397 (1997) 333–338

Glueball- $q\bar{q}$ filter in central hadron production

Frank E. Close^{a,1}, Andrew Kirk^{b,2}

^a *Rutherford Appleton Laboratory, Chilton, Didcot, OX11 0QX, UK*

^b *School of Physics and Space Research, Birmingham University, Birmingham, UK*

Received 18 December 1996

Editor: K. Winter



ELSEVIER

PHYSICS LETTERS B

EDITORS

L. Alvarez-Gaumé, Theory Division, CERN, CH-1211 Geneva 23, Switzerland,

E-mail address: Alvarez@NXTH04.CERN.CH

Theoretical High Energy Physics (General Theory) from the Iberian Peninsula, France, Switzerland, Italy, Malta, Austria, Hungary, Balkan countries and Cyprus

J.-P. Blaizot, Service de Physique Théorique, Orme des Merisiers, C.E.A.-Saclay, F-91191 Gif-sur-Yvette Cedex, France,

E-mail address: plb(@)SPHT.SACLAY.CEA.FR

Theoretical Nuclear Physics

M. Dine, Physics Department, University of California at Santa Cruz, Santa Cruz, CA 95064, USA,

E-mail address: Dine@SCIPP.UCS.CEDU

Theoretical High Energy Physics from countries outside Europe

R. Gatto, Theory Division, CERN, CH-1211 Geneva 23, Switzerland,

E-mail address: Raoul.Gatto@CERN.CH

Theoretical High Energy Physics (Particle Phenomenology) from the Iberian Peninsula, France, Switzerland, Italy, Malta, Austria, Hungary, Balkan countries and Cyprus

H. Georgi, Department of Physics, Harvard University, Cambridge, MA 02138, USA,

E-mail address: Georgi@PHYSICS.HARVARD.EDU

Theoretical High Energy Physics from countries outside Europe

Aims and Scope

Physics Letters B ensures the rapid publication of letter-type communications in the fields of Nuclear Physics/Intermediate Energy Physics, High Energy Physics and Field Theory.

Abstracted/indexed in:

Current Contents: Physical, Chemical & Earth Sciences; INSPEC.

Subscription Information 1997

PHYSICS LETTERS A (ISSN 0375-9601) and PHYSICS LETTERS B (ISSN 0370-2693) will each be published weekly. For 1997 13 volumes, volumes 224-236 (78 issues altogether) of Physics Letters A have been announced. For 1997 26 volumes, volumes 390-415 (104 issues altogether) of Physics Letters B have been announced. The subscription prices for these volumes are available upon request from the Publisher. PHYSICS REPORTS (ISSN 0370-1573) will be published approximately weekly. For 1997 14 volumes, volumes 277-290 (84 issues altogether) of Physics Reports have been announced. The subscription price for these volumes is available upon request from the Publisher.

A combined subscription to the 1997 issues of Physics Letters A, Physics Letters B and Physics Reports is available at a reduced rate.

Subscriptions are accepted on a prepaid basis only and are entered on a calendar year basis. Issues are sent by SAL (Surface Air Lifted) mail wherever this service is available. Airmail rates are available upon request.

For orders, claims, product enquiries (no manuscript enquiries) please contact the Customer Support Department at the Regional Sales Office nearest to you:

US mailing notice - Physics Letters B (ISSN 0370-2693) is published weekly by Elsevier Science B.V., P.O. Box 211, 1000 AE Amsterdam, The Netherlands. Annual subscription price in the USA is US\$ 6917.00 (valid in North, Central and South America only), including air speed delivery. Periodicals postage paid at Jamaica, NY 11431.

USA POSTMASTERS: Send address changes to Physics Letters B, Publications Expediting, Inc., 200 Meacham Avenue, Elmont, NY 11003.

AIRFREIGHT AND MAILING in the USA by Publications Expediting, Inc., 200 Meacham Avenue, Elmont, NY 11003.

© The paper used in this publication meets the requirements of ANSI/NISO Z39.48-1992 (Permanence of Paper).

W. Haxton, Institute for Nuclear Theory, Box 351550, University of Washington, Seattle, WA 98195-1550, USA,

E-mail address: plb@PHYS.WASHINGTON.EDU

Theoretical Nuclear Physics

P.V. Landshoff, Department of Applied Mathematics and Theoretical Physics, University of Cambridge, Silver Street, Cambridge CB3 9EW, UK,

E-mail address: P.V.Landshoff@DAMTP.CAM.AC.UK

Theoretical High Energy Physics from Ireland, United Kingdom, Benelux, Scandinavian countries, German Federal Republic, Poland, Czech Republic, Slovak Republic, Baltic countries and the Commonwealth of Independent States

L. Montanet, CERN, CH-1211 Geneva 23, Switzerland,

E-mail address: Lucien.Montanet@CERN.CH

Experimental High Energy Physics

J.P. Schiffer, Argonne National Laboratory, 9700 South Cass Avenue, Argonne, IL 60439, USA,

E-mail address: Schiffer@ANL.GOV

Experimental Nuclear Physics (Heavy Ion Physics, Intermediate Energy Nuclear Physics)

R.H. Siemssen, KVI, University of Groningen, Zernikelaan 25, NL-9747 AA Groningen, The Netherlands,

E-mail address: Siemssen@KVI.NL

Experimental Nuclear Physics (Heavy Ion Physics, Low Energy Nuclear Physics)

K. Winter, CERN, CH-1211 Geneva 23, Switzerland

E-mail address: Klaus.Winter@CERN.CH

Experimental High Energy Physics

New York, Elsevier Science, P.O. Box 945, New York, NY 10159-0945, USA. Tel: +1 212 633 3730, [Toll Free number for North American customers: 1 888 4ES INFO (437 4636)], Fax: +1 212 633 3680, E-mail: usinfof@elsevier.com

Amsterdam, Elsevier Science, P.O. Box 211, 1000 AE Amsterdam, The Netherlands. Tel: +31 20 485 3757; Fax: +31 20 485 3432, E-mail: nlinfof@elsevier.nl

Tokyo, Elsevier Science, 9-15, Higashi-Azabu 1-chome, Minato-ku, Tokyo 106, Japan. Tel: +81 3 5561 5033; Fax: +81 3 5561 5047, E-mail: kyf04035@niftyserve.or.jp

Singapore, Elsevier Science, No. 1 Temasek Avenue, #17-01 Millenia Tower, Singapore 039192. Tel: +65 434 3727; Fax: +65 337 2230, E-mail: asiainfo@elsevier.com.sg

Claims for issues not received should be made within six months of our publication (mailing) date.

Advertising Offices

International: Elsevier Science, Advertising Department, The Boulevard, Langford Lane, Kidlington, Oxford OX5 1GB, UK. Tel: +44 1865 843565; Fax: +44 1865 843976.

USA and Canada: Weston Media Associates, Dan Lipner, P.O. Box 1110, Greens Farms, CT 06436-1110, USA. Tel: +1 203 261 2500; Fax: +1 203 261 0101.

Japan: Elsevier Science Japan, Marketing Services, 1-9-15 Higashi-Azabu, Minato-ku, Tokyo 106, Japan. Tel: +81 3 5561 5033; Fax: +81 3 5561 5047.





ELSEVIER

3 April 1997

PHYSICS LETTERS B

Physics Letters B 397 (1997) 333–338

Glueball- $q\bar{q}$ filter in central hadron production

Frank E. Close^{a,1}, Andrew Kirk^{b,2}^a Rutherford Appleton Laboratory, Chilton, Didcot, OX11 0QX, UK^b School of Physics and Space Research, Birmingham University, Birmingham, UK

Received 18 December 1996

Editor: K. Winter

Abstract

Glueballs and $q\bar{q}$ of the same J^{PC} are distinguishable due to their boson versus fermion internal structure. This leads to a different topology for central production of glueballs and $q\bar{q}$. We apply this test to data from the WA102 experiment and find that the $f_0(1500)$ and the $f_2(1900)$ show behaviour consistent with glueballs and opposite to that expected if they were pure $q\bar{q}$ states. © 1997 Elsevier Science B.V.

We propose a method for filtering glueballs with $J^{PC} = (0, 1, 2)^{++}$ from their $^3P_{(J=0,1,2)}$ $q\bar{q}$ counterparts when they are produced in the central region of diffractive processes. The derivation is intuitive rather than rigorous, yet its application to data from the CERN WA102 experiment turns out to reveal some remarkable empirical regularities [1].

These matters are timely given the considerable current interest in the possibility that the lightest glueball is a scalar with a mass of about 1.5 GeV [2,3]. This is motivated both by predictions of lattice QCD [4] and by emerging hints in various experiments where glueball production has historically been expected to be favoured [3,5–7]. One such mechanism is “central production” where the produced mesons have no memory of the flavour of the initiating hadrons [8] and are excited via the gluonic fields of the “pomeron” [9]. Consequently it has been anticipated that production of glueballs may be especially favoured in such processes.

However, such anticipation requires some caution.

First there is the well known problem that non-diffractive transfer of flavour (Regge exchange) can contaminate this simple picture and lead to the appearance of $q\bar{q}$ mesons in the central region. Furthermore, even for the diffractive production, momentum transfer between the gluons of the pomeron and the aligned constituents of the produced meson may lead to either gg or $q\bar{q}$ states. The former may be favoured relative to $q\bar{q}$ production due to colour factors but unless further cuts are made to enhance the gg signal, the appearance of novel states in central production is not of itself definitive evidence for a glueball.

However, there has been an interesting development with the recent empirical observation [10] that the states seen in central production are a function of the topology, and depend on whether events are classified as either LL or LR (“left left” or “left right” in the sense of how the beams scatter into the final state relative to the initial direction). Specifically, when the two beams scatter into opposing hemispheres (LR as defined in Ref. [10]) the $f_1(1285)$ 3P_1 $q\bar{q}$ state is clearly

¹ E-mail: fec@v2.rl.ac.uk² E-mail: ak@hep.ph.bham.ac.uk

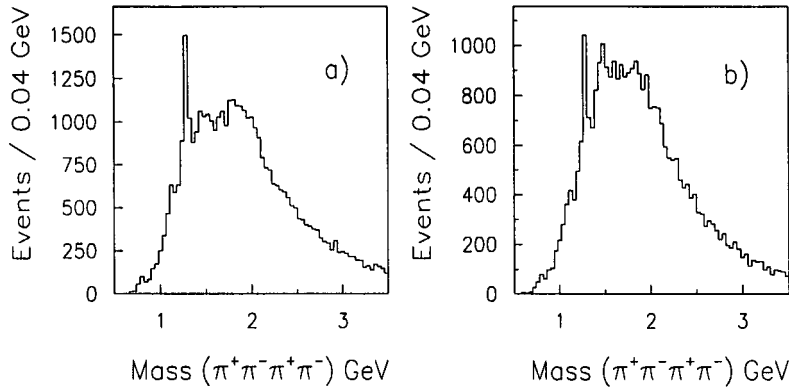


Fig. 1. The 4π mass spectra from Ref. 10 for (a) LR and (b) LL topologies.

visible (Fig. 1a) whereas in the same side configuration (*LL*) it is less prominent relative to the structures in the 1.4–2.0 GeV mass range (fig 1b). Such discrimination has also been seen for the $f_2(1270)$ 3P_2 $q\bar{q}$ state relative to the enigmatic $f_0(980)$ in the $\pi\pi$ channel [10]. Similar phenomena have recently been noted also in Fermilab data [11] and, in retrospect, at the ISR [12].

This phenomenon led us to reconsider the mechanisms for the production of gg and $q\bar{q}$ in the central region. Our notation is that in the centre of mass frame the initial protons have four-vectors

$$p = (P + M^2/2P; p_T = 0, p_L = P),$$

$$q = (P + M^2/2P; q_T = 0, q_L = -P),$$

the outgoing protons having respectively momenta

$$p' \equiv (p'_L = x_a p; p'_T), \quad q' \equiv (q'_L = x_b q; q'_T)$$

and $x_F \equiv x_a - x_b$. The data have historically been presented as a function of $M_R^2 \sim (1 - x_a)(1 - x_b)s$ with some separation as a function of

$$t_a \sim -\frac{(p'_T)^2}{1 - x_a}; \quad t_b \sim -\frac{(q'_T)^2}{1 - x_b}.$$

The topological separation into *LL* and *LR* is novel and independent of the magnitudes of $t_{a,b}$ [10]. We shall suggest that it is driven primarily by the variable $dP_T \equiv |\mathbf{p}'_T - \mathbf{q}'_T|$ and that gg configurations are enhanced in kinematic configurations where the gluons can flow “directly” into the final state with only small momentum transfer, in particular when $dP_T \rightarrow 0$.

A major uncertainty when analysing these processes is the modelling of the pomerons’ interactions. While it is now rather generally accepted that a pomeron is a colour singlet gluonic system (see, e.g., Ref. [9]), an unknown feature is the topology of the individual constituent gluons in production processes. For example, Bialas and Landshoff [9] consider Higgs production by double pomeron exchange by treating each pomeron as a colour singlet system of two gluons; one gluon is “passive” and serves primarily to ensure overall colour singlet exchange (Fig. 2a) while the other gluon in each pomeron transfers (longitudinal) momentum which stimulates the Higgs production. This topology has some problems for the exclusive production of $q\bar{q}$ or a glueball. While it may be applicable to the pointlike Higgs, for the exclusive production of a spatially extended hadron, which is the case of interest in the present paper, one anticipates that it may be suppressed. The essential reason is the large rescattering that is required to turn the large relative longitudinal momenta of the “active” gluons into co-moving constituents necessary for the exclusive production of a composite hadron.

Specifically, consider the meson, R , to have an overall longitudinal momentum $P \equiv P_3$ and to be made of constituents (e.g. gluons or quarks) of mass m . The four momentum p^μ of a particle with mass m may be written

$$p^\mu = (p^+ \equiv p_0 + p_3; p^- = \frac{m^2 + p_T^2}{p^+}; p_T).$$

The momentum of the meson R is shared among its

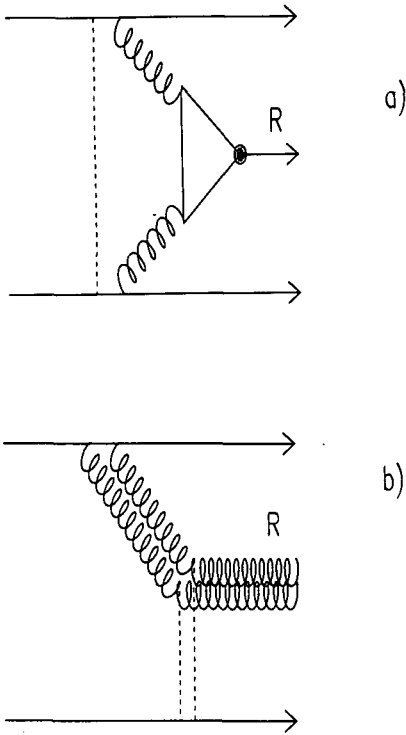


Fig. 2. (a) Two gluons with large p_L fuse to make a meson R . (b) Diffractive scattering of a gluonic pomeron to produce a glueball.

constituents, the j -th constituent carrying a fraction $x_j = p_j^+/P^+$ where the total (time-like) momentum $P^+ = \sum_j p_j^+$ is conserved, $\sum_j x_j = 1$. The relative momentum of the j -th constituent, $l_j = p_j - x_j P$, is space like with $l^2 = -l_T^2$ and $l^+ = 0$. For a meson that is an S -wave state in its rest frame, the light cone wavefunction will have a structure that may be parametrised in the form [13]

$$\phi_{LC}(x, l_T) \sim \exp\left(-\sum_j \frac{(l_T^2 + m^2) R^2}{x_j}\right),$$

where the sum is over the constituents, j , and R is a measure of the hadron's size. (Excitation of the l_T degree of freedom corresponds to P -wave (and higher orbitals) in the static limit [14].) For a system of two equal mass constituents with $\delta x \equiv x_1 - x_2$, the structure of the exponent becomes

$$\exp\left(-\frac{4(l_T^2 + m^2) R^2}{1 - \delta x^2}\right)$$

which is suppressed if l_T is large or if $\delta x \rightarrow 1$. This is essentially the well known form factor suppression of asymmetric configurations [13,15] and becomes increasingly significant as M_R becomes large. It is manifested empirically in the sharp cut off of the M_R distribution in central hadron production (as for example when $M_R > 2$ GeV in Fig. 1 even though the kinematic reach of the experiment goes beyond this).

The above remarks are well known for the production of spatially extended $q\bar{q}$ and will also be expected to apply to the production of glueballs. However, in addition to these common features there can be generic differences between the production of glueballs and $q\bar{q}$ of the same J^{PC} . For example, a qualitative difference may result if glueballs are more pointlike than $q\bar{q}$ or have a hard gluonic component in their wavefunction, either of which would relatively enhance their production. The hard rescattering of $gg \rightarrow gg$ rather than $gg \rightarrow q\bar{q}$ is also aided by colour factors. There is also the possibility that the more singular behaviour of propagators for confined gluons relative to quarks at zero momentum [16] may lead to different production rates for $q\bar{q}$ and gg as a function of the kinematical variables, for example in dP_T and thereby in LL - LR .

The above description of the pomeron is an extreme case in the sense that its gluons are treated asymmetrically. The exclusive meson production then arises when one “hard” gluon from one pomeron fuses with a gluon from the other pomeron. These two gluons have a large relative p_L and in consequence are much separated in δx ; this disfavours exclusive production. An alternative extreme, which can reduce this penalty, is where the two gluons within a single pomeron cooperate in being strongly aligned, both in p_L and p_T . In this case we can regard the initial proton beam as a source of pomerons, analogous to the way that an electron beam is a source of photons. Consider the process in the laboratory frame: the pomerons then scatter “diffractively” in the colour singlet gluonic field of the target (Fig. 2b) analogous to the diffractive photoproduction of vector mesons. With the pomeron having $C = +$ we anticipate that this mechanism will favourably produce $J^{PC} = 0^{++}, 2^{++}$ glueballs (which are the lightest according to lattice QCD). The pomeron can in principle also convert into $J^{PC} = 0^{++}, 2^{++}$ $q\bar{q}$ mesons in this process analogous to the photon turning into $J^{PC} = 1^{--}$ $q\bar{q}$. However, for t and $q_T' \rightarrow 0$, diffractive photoproduction appears

to produce only 3S_1 rather than 3D_1 configurations, suggesting that the excitation of internal angular momenta in the $q\bar{q}$ system is suppressed. If this is a guide to what happens with an initial pomeron “beam” in place of a photon, then one may expect that in this kinematic region the $^3P_{0,2} q\bar{q}$ will be disfavoured relative to their glueball counterparts for which these J^{PC} can be realised in S -wave.

The kinematics and experimental triggers cannot access this “ideal” situation and require \mathbf{p}'_T and \mathbf{q}'_T to be non-zero. When the \mathbf{p}'_T and \mathbf{q}'_T are co-moving and of equal magnitude such that $dP_T \rightarrow 0$, they tend to produce an overall transverse boost of the meson R but with limited relative (internal) momentum: the resulting configuration for R will be strongly coupled to an S -state. By contrast, when the \mathbf{p}'_T and \mathbf{q}'_T are equal in magnitude but anti-aligned (so dP_T is large) then there can be significant relative l_T ($\sim dP_T$) within R . Note that in the laboratory frame R is moving overall with large p_L and that excitation of the l_T degree of freedom corresponds to P -wave (and higher orbitals) in the static limit. Thus by making the selection on data that $dP_T \rightarrow 0$, there is the possibility that $q\bar{q}$ with $J^{PC} = 0^{++}, 1^{++}, 2^{++}$ (which are all P -wave composites) will be suppressed relative to glueballs (or at least, relative to S -wave bound states of bosons with these J^{PC}). In effect, the Bialas-Landshoff topology encounters the penalty of mismatched p_L , which disfavours exclusive meson production at large M_R ; the alternate topology dilutes this problem in p_L but in p_T it remains. It is this which is varied via dP_T and which can govern the relative importance of S and P (or higher) wave states.

If this is realised then we expect $f_1(1285)$, $f_2(1270)$ inter alia to be suppressed as $dP_T \rightarrow 0$; we expect $f_0^3 P_0 q\bar{q}$ to be suppressed similarly whereas $f_0(1500) \equiv gg$ or $f_0(980) \equiv K\bar{K}$ would be able to survive. Conversely, at larger dP_T the production of gg and $q\bar{q}$ can be competitive, their relative production rates being dependent on their detailed internal wavefunctions and the relative importance of the collinear versus asymmetric (hard gluon) production mechanisms.

The above intuitive picture is at best only a first sketch of the full dynamics but at least it provides a starting point that is qualitatively consistent with the pattern of the LL and LR topologies. Intuitively one expects that the LL configuration will contain a large

sample with comparatively small relative transverse momentum and hence $dP_T \rightarrow 0$ favouring the glueballs. In contrast, the LR topology will have a tendency for rather larger relative transverse momentum, thereby necessitating greater momentum transfer in the exclusive meson production vertex; thus for this case one will expect both gg or $q\bar{q}$ production to occur. The relative emergence of the glueball candidates compared to the established $f_1(1285) q\bar{q}$ in Fig. 1 are in accord with this. However, if it is the dP_T variable that underpins the $LL - LR$ effect, then there should be a more marked effect when the data are selected directly as a function of $dP_T = |\mathbf{p}'_T - \mathbf{q}'_T|$. Accordingly we have done so and present the results for the 4π channel in Fig. 3.

The $dP_T \geq 0.5$ GeV (Fig. 3a) is similar to the original LR sample as expected. The sample with $0.2 \text{ GeV} \leq dP_T \leq 0.5 \text{ GeV}$ (Fig. 3b) shows the $f_1(1285)$ becoming suppressed and a sharpening of the $f_0(1500)$ and $f_2(1900)$ structures. However, the most dramatic effect is seen in the $dP_T \leq 0.2$ GeV sample (Fig. 3c) where the $f_1(1285)$, a $q\bar{q}$ state, has essentially disappeared while the $f_0(1500)$ and $f_2(1900)$ structures have become more clear. (This is driven by $dP_T \rightarrow 0$ and is not an artifact of Bose symmetry, as might have occurred if the pomeron-photon analogy were exact: if we select $t_1 \neq t_2$, the $f_1(1285)$ still disappears as $dP_T \rightarrow 0$.) These surviving structures have been identified as glueball candidates: the $f_0(1500)$ is motivated by lattice QCD while the $f_2(1900)$ is noted to have the right mass to lie on the pomeron trajectory [17].

The $f_0(1500)$ is rather clean and appears at $dP_T \rightarrow 0$ with a shape and mass that are not inconsistent with what is seen in $p\bar{p}$ annihilation. This is in contrast to the full data sample of the present experiment where this state interfered with the $f_0(1370)$ and was shifted to a lower mass (~ 1440 MeV) [6] and with a much narrower width (~ 60 MeV). The emergence in Fig. 2c of a more canonical $f_0(1500)$ [7] suggests, at least implicitly, that the $f_0(1370) q\bar{q}$ [18] state has become suppressed as $dP_T \rightarrow 0$ while the (gg candidate) $f_0(1500)$ has survived. It is important that experiments now verify if this is indeed the case.

Similar cuts have been applied to the $\pi\pi$, $K\bar{K}$ and $K\bar{K}\pi$ data (see the following paper [1]). The $f_1(1285)$ and $f_1(1420)$ are seen in the channel $K\bar{K}\pi$ when $dP_T > 0.5 \text{ GeV}$ but vanish when $dP_T \rightarrow 0$

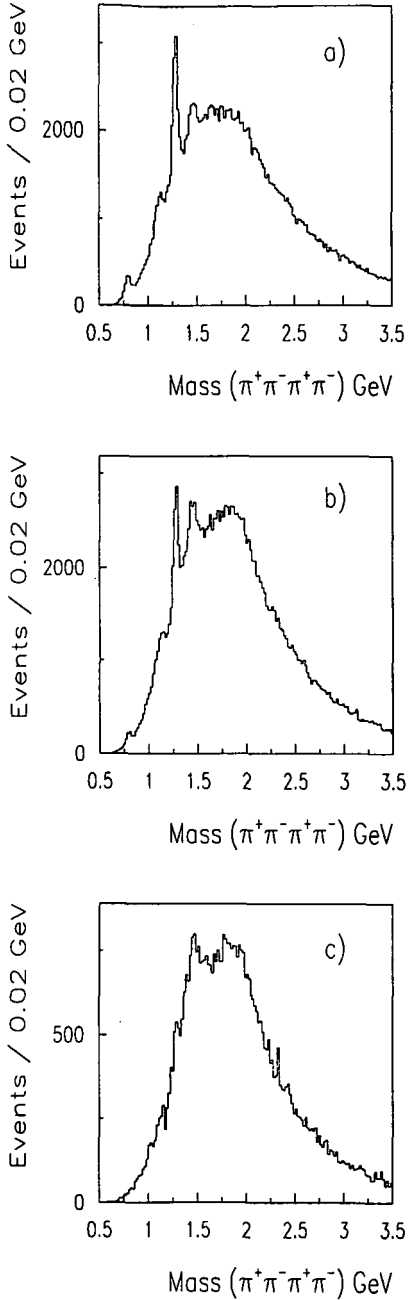


Fig. 3. The 4π mass spectra (i) With $dP_T > 0.5$ GeV exhibiting a clear $f_1(1285)$; (ii) $0.2 < dP_T < 0.5$ GeV (iii) $dP_T < 0.2$ GeV where the $f_1(1285)$ has disappeared while the $f_0(1500)$ is seen more clearly.

in line with $^3P_1 q\bar{q}$. We note that there are no 1^{++} resonances visible in this limit, in line with lattice QCD which predicts that there are no 1^{++} glueballs below ~ 3.5 GeV [19]. In the $\pi\pi$ channel we see the $f_2(1270)$ when $dP_T > 0.5$ GeV. This vanishes as $dP_T \rightarrow 0$ as expected for $^3P_2 q\bar{q}$. The survival of $f_0(980)$ is significant and we suggest that this shows its affinity for coupling via S -wave bosons. This could be due to a gg presence or to $K\bar{K}$ in its wavefunction [20,21]; at the present level of analysis we are unable to distinguish between these alternatives.

Summarising, we have stumbled upon a remarkable feature of central meson production that does not appear to have been noticed previously. Although its extraction via the dP_T cut was inspired by intuitive arguments following the observation of an $LL - LR$ asymmetry, we have no simple dynamical explanation. Nonetheless, the empirical message is dramatic enough to stand alone and thereby we suggest that a systematic study of meson production as a function of $dP_T \equiv |\mathbf{p}'_T - \mathbf{q}'_T|$ holds special promise for isolating the systematics of meson production in the central region and in filtering $q\bar{q}$ mesons from those with significant *boson-boson* content. The latter include $K\bar{K}$ molecular bound states (or $s\bar{s}$ states with significant $K\bar{K}$ component in the wavefunction), *pomeron-pomeron* states and *glueballs*. Our selection procedure will need to be tested further in future experiments in order to determine the extent of its empirical validity. In turn we hope thereby that its dynamical foundations may be put on a sounder footing and the filtering of glueballs be made a practical reality.

F.E.C. is partially supported by the European Community Human Mobility Program Eurodafne, Contract CHRX-CT92-0026 and is grateful to the WA102 Collaboration for this interaction.

References

- [1] D. Barberis et al., WA102 Collaboration, December 1996.
- [2] F.E. Close, Proc. LEAP96, hep-ph/9610426
- [3] R. Landua, Proc. XXVIII Int. Conf. High Energy Physics, Warsaw, July 1996.
- [4] G. Bali et al. (UKQCD), Phys. Lett. B 309 (1993) 378; D. Weingarten, hep-lat/9608070; J. Sexton et al., Phys. Rev. Lett. 75 (1995) 4563; F.E. Close and M.J. Teper, On the lightest Scalar Glueball,

- Rutherford Appleton Laboratory report no. RAL-96-040;
Oxford University report no. OUTP-96-35P
- [5] V.V. Anisovich et al., *B* 323 (1994) 233;
C. Amsler et al., *Phys. Lett. B* 342 (1994) 433; *B* 291 (1992) 347; *B* 340 (1994) 259;
D.V. Bugg et al., *Phys. Lett. B* 353 (1995) 378;
D. Alde et al., *Phys. Lett. B* 201 (1988) 160.
- [6] F. Antinori et al., WA91 Collaboration, *Phys. Lett. B* 353 (1995) 589.
- [7] Particle Data Group, *Phys. Rev. D* 54 (1996) 1.
- [8] D. Robson, *Nucl. Phys. B* 130 (1977) 328;
F.E. Close, *Rep. Prog. Phys.* 51 (1988) 833.
- [9] F.E. Low *Phys. Rev. D* 12 (1975) 163;
S. Nussinov *Phys. Rev. D* 14 (1976) 246;
P.V. Landshoff and O. Nachtmann, *Z. Phys. C* 35 (1987) 405;
A. Donnachie and P.V. Landshoff, *Nucl. Phys. B* 311 (1988) 509;
A. Bialas and P.V. Landshoff *Phys. Lett. B* 256 (1991) 540.
- [10] D. Barberis et al., WA91 Collaboration, *Phys. Lett. B* 388 (1996) 853.
- [11] G. Gutierrez, talk at LEAP96 (unpublished)
- [12] A. Breakstone et al., *Z. Phys. C* 48 (1990) 569.
- [13] G.P. Lepage, in: *Particles and Fields*, Vol. 2, eds. A.Z. Capri and A.N. Kamal (Plenum, New York, 1983) p. 83;
S.J. Brodsky, in: *Particles and Fields*, Vol. 2, eds. A.Z. Capri and A.N. Kamal (Plenum, New York, 1983) p.143.
- [14] H.J. Weber, *Ann. Phys.* 177 (1987) 38;
Z. Dziembowski, *Phys. Rev. D* 37 (1988) 768.
- [15] S.J. Brodsky and G. Farrar, *Phys. Rev. Lett.* 31 (1973) 1153.
- [16] M.R. Pennington (private communication);
N. Brown and M.R. Pennington *Phys. Rev. D* 38 (1988) 2266.
- [17] P.V. Landshoff, private communication.
S. Abatzis et al *Phys. Lett. B* 324 (1994) 529.
- [18] C. Amsler and F.E. Close, *Phys. Lett. B* 353 (1995) 385;
Phys. Rev. D 53 (1996) 295.
- [19] C. Michael and M. Teper, *Nucl. Phys. B* 305 (1988) 453;
G.S. Bali et al (UKQCD) *Phys. Lett. B* 309 (1993) 378.
- [20] J. Weinstein and N. Isgur, *Phys. Rev. D* 27 (1983) 588.
- [21] N. Tornqvist, *Z. Phys. C* 68 (1995) 647.

PHYSICS LETTERS B

Instructions to Authors (short version)

(A more detailed version of these instructions is published in the preliminary pages to each volume.)

Submission of papers

Manuscripts (one original + two copies), accompanied by a covering letter, should be sent to one of the Editors indicated on page 2 of the cover.

Original material. By submitting a paper for publication in Physics Letters B the authors imply that the material has not been published previously nor has been submitted for publication elsewhere and that the authors have obtained the necessary authority for publication.

Refereeing. Submitted papers will be refereed and, if necessary, authors may be invited to revise their manuscript. If a submitted paper relies heavily on unpublished material, it would be helpful to have a copy of that material for the use of the referee.

Types of contributions

Letters. The total length of the paper should preferably not exceed six journal pages, equivalent to ten typewritten pages with double spacing, including the list of authors, abstract, references, figure captions and three figures. In the case that more figures are required, the text should be shortened accordingly. As proofs will *not* be sent, authors should check their papers carefully before submission.

Manuscript preparation

All manuscripts should be written in good English. The paper copies of the text should be prepared with double line spacing and wide margins, on numbered sheets. See notes opposite on electronic version of manuscripts.

Structure. Please adhere to the following order of presentation: Article title, Author(s), Affiliation(s), Abstract, Classification codes and keywords, Main text, Acknowledgements, Appendices, References, Figure captions, Tables.

Corresponding author. The name, complete postal address, telephone and fax numbers and the e-mail address of the corresponding author should be given on the first page of the manuscript.

Classification codes/keywords. Please supply one to four classification codes (PACS and/or MSC) and up to six keywords of your own choice that describe the content of your article in more detail.

References. References to other work should be consecutively numbered in the text using square brackets and listed by number in the Reference list. Please refer to the more detailed instructions for examples.

Illustrations

Illustrations should also be submitted in triplicate: one master set and two sets of copies. The *line drawings* in the master set should be original laser printer or plotter output or drawn in black india ink, with careful lettering, large enough (3–5 mm) to remain legible after reduction for printing. The *photographs* should be originals, with somewhat more contrast than is required in the printed version. They should be unmounted unless part of a composite figure. Any scale markers should be inserted on the photograph, not drawn below it.

Colour plates. Figures may be published in colour, if this is judged essential by the Editor. The Publisher and the author will each bear part of the extra costs involved. Further information is available from the Publisher.

After acceptance

Notification. You will be notified by the Editor of the journal of the acceptance of your article and invited to supply an electronic version of the accepted text, if this is not already available.

Copyright transfer. You will be asked to transfer the copyright of the article to the Publisher. This transfer will ensure the widest possible dissemination of information.

No proofs. In order to speed up publication, all proofreading will be done by the Publisher and proofs are *not* sent to the author(s).

Electronic manuscripts

The Publisher welcomes the receipt of an electronic version of your accepted manuscript (preferably encoded in LaTeX). If you have not already supplied the final, revised version of your article (on diskette) to the journal Editor, you are requested herewith to send a file with the text of the accepted manuscript directly to the Publisher by e-mail or on diskette (allowed formats 3.5" or 5.25" MS-DOS, or 3.5" Macintosh) to the address given below. Please note that no deviations from the version accepted by the Editor of the journal are permissible without the prior and explicit approval by the Editor. Such changes should be clearly indicated on an accompanying printout of the file.

Author benefits

No page charges. Publishing in Physics Letters B is free.

Free offprints. The corresponding author will receive 50 offprints free of charge. An offprint order form will be supplied by the Publisher for ordering any additional paid offprints.

Discount. Contributors to Elsevier Science journals are entitled to a 30% discount on all Elsevier Science books.

Contents Alert. Physics Letters B is included in Elsevier's pre-publication service Contents Alert.

Further information (after acceptance)

Elsevier Science B.V., Physics Letters B
Issue Management
Physics and Materials Science
P.O. Box 2759, 1000 CT Amsterdam
The Netherlands
Tel.: + 31 20 485 2634
Fax: + 31 20 485 2319
E-mail: NHPDESKED@ELSEVIER.NL



North-Holland, an imprint of Elsevier Science

PHYSICS LETTERS B

Physics Letters B 397 (1997) 333–338

Glueball- $q\bar{q}$ filter in central hadron production

Frank E. Close^{a,1}, Andrew Kirk^{b,2}

^a *Rutherford Appleton Laboratory, Chilton, Didcot, OX11 0QX, UK*

^b *School of Physics and Space Research, Birmingham University, Birmingham, UK*

Received 18 December 1996

Editor: K. Winter

PHYSICS LETTERS B

EDITORS

L. Alvarez-Gaumé, Theory Division, CERN, CH-1211 Geneva 23, Switzerland,

E-mail address: Alvarez@NXTH04.CERN.CH

Theoretical High Energy Physics (General Theory) from the Iberian Peninsula, France, Switzerland, Italy, Malta, Austria, Hungary, Balkan countries and Cyprus

J.-P. Blaizot, Service de Physique Théorique, Orme des Merisiers, C.E.A.-Saclay, F-91191 Gif-sur-Yvette Cedex, France,

E-mail address: plb(@)SPHT.SACLAY.CEA.FR

Theoretical Nuclear Physics

M. Dine, Physics Department, University of California at Santa Cruz, Santa Cruz, CA 95064, USA,

E-mail address: Dine@SCIPP.UCSC.EDU

Theoretical High Energy Physics from countries outside Europe

R. Gatto, Theory Division, CERN, CH-1211 Geneva 23, Switzerland,

E-mail address: Raoul.Gatto@CERN.CH

Theoretical High Energy Physics (Particle Phenomenology) from the Iberian Peninsula, France, Switzerland, Italy, Malta, Austria, Hungary, Balkan countries and Cyprus

H. Georgi, Department of Physics, Harvard University, Cambridge, MA 02138, USA,

E-mail address: Georgi@PHYSICS.HARVARD.EDU

Theoretical High Energy Physics from countries outside Europe

Aims and Scope

Physics Letters B ensures the rapid publication of letter-type communications in the fields of Nuclear Physics/Intermediate Energy Physics, High Energy Physics and Field Theory.

Abstracted/indexed in:

Current Contents: Physical, Chemical & Earth Sciences; INSPEC.

Subscription Information 1997

PHYSICS LETTERS A (ISSN 0375-9601) and PHYSICS LETTERS B (ISSN 0370-2693) will each be published weekly. For 1997 13 volumes, volumes 224-236 (78 issues altogether) of Physics Letters A have been announced. For 1997 26 volumes, volumes 390-415 (104 issues altogether) of Physics Letters B have been announced. The subscription prices for these volumes are available upon request from the Publisher. PHYSICS REPORTS (ISSN 0370-1573) will be published approximately weekly. For 1997 14 volumes, volumes 277-290 (84 issues altogether) of Physics Reports have been announced. The subscription price for these volumes is available upon request from the Publisher.

A combined subscription to the 1997 issues of Physics Letters A, Physics Letters B and Physics Reports is available at a reduced rate.

Subscriptions are accepted on a prepaid basis only and are entered on a calendar year basis. Issues are sent by SAL (Surface Air Lifted) mail wherever this service is available. Airmail rates are available upon request.

For orders, claims, product enquiries (no manuscript enquiries) please contact the Customer Support Department at the Regional Sales Office nearest to you:

U.S. mailing notice - Physics Letters B (ISSN 0370-2693) is published weekly by Elsevier Science B.V., P.O. Box 211, 1000 AE Amsterdam, The Netherlands. Annual subscription price in the USA is US\$ 6917.00 (valid in North, Central and South America only), including air speed delivery. Periodicals postage paid at Jamaica, NY 11431.

USA POSTMASTERS: Send address changes to Physics Letters B, Publications Expediting, Inc., 200 Meacham Avenue, Elmont, NY 11003.

AIRFREIGHT AND MAILING in the USA by Publications Expediting, Inc., 200 Meacham Avenue, Elmont, NY 11003.

© The paper used in this publication meets the requirements of ANSI/NISO Z39.48-1992 (Permanence of Paper).

W. Haxton, Institute for Nuclear Theory, Box 351550, University of Washington, Seattle, WA 98195-1550, USA,

E-mail address: plb@PHYS.WASHINGTON.EDU

Theoretical Nuclear Physics

P.V. Landshoff, Department of Applied Mathematics and Theoretical Physics, University of Cambridge, Silver Street, Cambridge CB3 9EW, UK,

E-mail address: P.V.Landshoff@DAMTP.CAM.AC.UK

Theoretical High Energy Physics from Ireland, United Kingdom, Benelux, Scandinavian countries, German Federal Republic, Poland, Czech Republic, Slovak Republic, Baltic countries and the Commonwealth of Independent States

L. Montanet, CERN, CH-1211 Geneva 23, Switzerland,

E-mail address: Lucien.Montanet@CERN.CH

Experimental High Energy Physics

J.P. Schiffer, Argonne National Laboratory, 9700 South Cass Avenue, Argonne, IL 60439, USA,

E-mail address: Schiffer@ANL.GOV

Experimental Nuclear Physics (Heavy Ion Physics, Intermediate Energy Nuclear Physics)

R.H. Siemssen, KVI, University of Groningen, Zernikelaan 25, NL-9747 AA Groningen, The Netherlands,

E-mail address: Siemssen@KVI.NL

Experimental Nuclear Physics (Heavy Ion Physics, Low Energy Nuclear Physics)

K. Winter, CERN, CH-1211 Geneva 23, Switzerland

E-mail address: Klaus.Winter@CERN.CH

Experimental High Energy Physics

New York, Elsevier Science, P.O. Box 945, New York, NY 10159-0945, USA. Tel: +1 212 633 3730, [Toll Free number for North American customers: 1 888 4ES INFO (437 4636)], Fax: +1 212 633 3680, E-mail: usinfo@elsevier.com

Amsterdam, Elsevier Science, P.O. Box 211, 1000 AE Amsterdam, The Netherlands. Tel: +31 20 485 3757; Fax: +31 20 485 3432, E-mail: nlinfo@elsevier.nl

Tokyo, Elsevier Science, 9-15, Higashi-Azabu 1-chome, Minato-ku, Tokyo 106, Japan. Tel: +81 3 5561 5033; Fax: +81 3 5561 5047, E-mail: kyf04035@niftyserve.or.jp

Singapore, Elsevier Science, No. 1 Temasek Avenue, #17-01 Millenia Tower, Singapore 039192. Tel: +65 434 3727; Fax: +65 337 2230, E-mail: asiainfo@elsevier.com.sg

Claims for issues not received should be made within six months of our publication (mailing) date.

Advertising Offices

International: Elsevier Science, Advertising Department, The Boulevard, Langford Lane, Kidlington, Oxford OX5 1GB, UK. Tel: +44 1865 843565; Fax: +44 1865 843976.

USA and Canada: Weston Media Associates, Dan Lipner, P.O. Box 1110, Greens Farms, CT 06436-1110, USA. Tel: +1 203 261 2500; Fax: +1 203 261 0101.

Japan: Elsevier Science Japan, Marketing Services, 1-9-15 Higashi-Azabu, Minato-ku, Tokyo 106, Japan. Tel: +81 3 5561 5033; Fax: +81 3 5561 5047.



Glueball- $q\bar{q}$ filter in central hadron production

Frank E. Close^{a,1}, Andrew Kirk^{b,2}

^a Rutherford Appleton Laboratory, Chilton, Didcot, OX11 0QX, UK

^b School of Physics and Space Research, Birmingham University, Birmingham, UK

Received 18 December 1996

Editor: K. Winter

Abstract

Glueballs and $q\bar{q}$ of the same J^{PC} are distinguishable due to their boson versus fermion internal structure. This leads to a different topology for central production of glueballs and $q\bar{q}$. We apply this test to data from the WA102 experiment and find that the $f_0(1500)$ and the $f_2(1900)$ show behaviour consistent with glueballs and opposite to that expected if they were pure $q\bar{q}$ states. © 1997 Elsevier Science B.V.

We propose a method for filtering glueballs with $J^{PC} = (0, 1, 2)^{++}$ from their ${}^3P_{(J=0,1,2)}$ $q\bar{q}$ counterparts when they are produced in the central region of diffractive processes. The derivation is intuitive rather than rigorous, yet its application to data from the CERN WA102 experiment turns out to reveal some remarkable empirical regularities [1].

These matters are timely given the considerable current interest in the possibility that the lightest glueball is a scalar with a mass of about 1.5 GeV [2,3]. This is motivated both by predictions of lattice QCD [4] and by emerging hints in various experiments where glueball production has historically been expected to be favoured [3,5–7]. One such mechanism is “central production” where the produced mesons have no memory of the flavour of the initiating hadrons [8] and are excited via the gluonic fields of the “pomeron” [9]. Consequently it has been anticipated that production of glueballs may be especially favoured in such processes.

However, such anticipation requires some caution.

First there is the well known problem that non-diffractive transfer of flavour (Regge exchange) can contaminate this simple picture and lead to the appearance of $q\bar{q}$ mesons in the central region. Furthermore, even for the diffractive production, momentum transfer between the gluons of the pomeron and the aligned constituents of the produced meson may lead to either gg or $q\bar{q}$ states. The former may be favoured relative to $q\bar{q}$ production due to colour factors but unless further cuts are made to enhance the gg signal, the appearance of novel states in central production is not of itself definitive evidence for a glueball.

However, there has been an interesting development with the recent empirical observation [10] that the states seen in central production are a function of the topology, and depend on whether events are classified as either LL or LR (“left left” or “left right” in the sense of how the beams scatter into the final state relative to the initial direction). Specifically, when the two beams scatter into opposing hemispheres (LR as defined in Ref. [10]) the $f_1(1285)$ 3P_1 $q\bar{q}$ state is clearly

¹ E-mail: fec@v2.rl.ac.uk

² E-mail: ak@hep.ph.bham.ac.uk

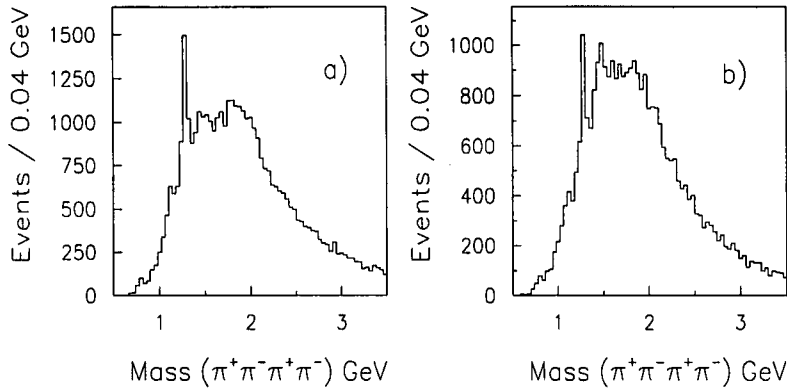


Fig. 1. The 4π mass spectra from Ref. 10 for (a) LR and (b) LL topologies.

visible (Fig. 1a) whereas in the same side configuration (LL) it is less prominent relative to the structures in the 1.4–2.0 GeV mass range (fig 1b). Such discrimination has also been seen for the $f_2(1270)$ 3P_2 $q\bar{q}$ state relative to the enigmatic $f_0(980)$ in the $\pi\pi$ channel [10]. Similar phenomena have recently been noted also in Fermilab data [11] and, in retrospect, at the ISR [12].

This phenomenon led us to reconsider the mechanisms for the production of gg and $q\bar{q}$ in the central region. Our notation is that in the centre of mass frame the initial protons have four-vectors

$$p = (P + M^2/2P; p_T = 0, p_L = P),$$

$$q = (P + M^2/2P; q_T = 0, q_L = -P),$$

the outgoing protons having respectively momenta

$$p' \equiv (p'_L = x_a p; p'_T), \quad q' \equiv (q'_L = x_b q; q'_T)$$

and $x_F \equiv x_a - x_b$. The data have historically been presented as a function of $M_R^2 \sim (1 - x_a)(1 - x_b)s$ with some separation as a function of

$$t_a \sim -\frac{(p'_T)^2}{1 - x_a}; \quad t_b \sim -\frac{(q'_T)^2}{1 - x_b}.$$

The topological separation into LL and LR is novel and independent of the magnitudes of $t_{a,b}$ [10]. We shall suggest that it is driven primarily by the variable $dP_T \equiv |p'_T - q'_T|$ and that gg configurations are enhanced in kinematic configurations where the gluons can flow “directly” into the final state with only small momentum transfer, in particular when $dP_T \rightarrow 0$.

A major uncertainty when analysing these processes is the modelling of the pomerons’ interactions. While it is now rather generally accepted that a pomeron is a colour singlet gluonic system (see, e.g., Ref. [9]), an unknown feature is the topology of the individual constituent gluons in production processes. For example, Bialas and Landshoff [9] consider Higgs production by double pomeron exchange by treating each pomeron as a colour singlet system of two gluons; one gluon is “passive” and serves primarily to ensure overall colour singlet exchange (Fig. 2a) while the other gluon in each pomeron transfers (longitudinal) momentum which stimulates the Higgs production. This topology has some problems for the exclusive production of $q\bar{q}$ or a glueball. While it may be applicable to the pointlike Higgs, for the exclusive production of a spatially extended hadron, which is the case of interest in the present paper, one anticipates that it may be suppressed. The essential reason is the large rescattering that is required to turn the large relative longitudinal momenta of the “active” gluons into co-moving constituents necessary for the exclusive production of a composite hadron.

Specifically, consider the meson, R , to have an overall longitudinal momentum $P \equiv P_3$ and to be made of constituents (e.g. gluons or quarks) of mass m . The four momentum p^μ of a particle with mass m may be written

$$p^\mu = (p^+ \equiv p_0 + p_3; p^- = \frac{m^2 + p_T^2}{p^+}; p_T).$$

The momentum of the meson R is shared among its

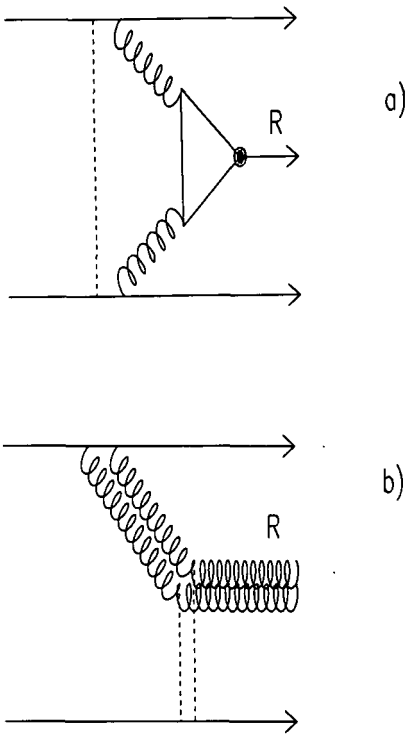


Fig. 2. (a) Two gluons with large p_L fuse to make a meson R . (b) Diffractive scattering of a gluonic pomeron to produce a glueball.

constituents, the j -th constituent carrying a fraction $x_j = p_j^+ / P^+$ where the total (time-like) momentum $P^+ = \sum_j p_j^+$ is conserved, $\sum_j x_j = 1$. The relative momentum of the j -th constituent, $l_j = p_j - x_j P$, is space like with $l^2 = -l_T^2$ and $l^+ = 0$. For a meson that is an S -wave state in its rest frame, the light cone wavefunction will have a structure that may be parametrised in the form [13]

$$\phi_{LC}(x, l_T) \sim \exp\left(-\sum_j \frac{(l_T^2 + m^2) R^2}{x_j}\right),$$

where the sum is over the constituents, j , and R is a measure of the hadron's size. (Excitation of the l_T degree of freedom corresponds to P -wave (and higher orbitals) in the static limit [14].) For a system of two equal mass constituents with $\delta x \equiv x_1 - x_2$, the structure of the exponent becomes

$$\exp\left(-\frac{4(l_T^2 + m^2) R^2}{1 - \delta x^2}\right)$$

which is suppressed if l_T is large or if $\delta x \rightarrow 1$. This is essentially the well known form factor suppression of asymmetric configurations [13,15] and becomes increasingly significant as M_R becomes large. It is manifested empirically in the sharp cut off of the M_R distribution in central hadron production (as for example when $M_R > 2$ GeV in Fig. 1 even though the kinematic reach of the experiment goes beyond this).

The above remarks are well known for the production of spatially extended $q\bar{q}$ and will also be expected to apply to the production of glueballs. However, in addition to these common features there can be generic differences between the production of glueballs and $q\bar{q}$ of the same J^{PC} . For example, a qualitative difference may result if glueballs are more pointlike than $q\bar{q}$ or have a hard gluonic component in their wavefunction, either of which would relatively enhance their production. The hard rescattering of $gg \rightarrow gg$ rather than $gg \rightarrow q\bar{q}$ is also aided by colour factors. There is also the possibility that the more singular behaviour of propagators for confined gluons relative to quarks at zero momentum [16] may lead to different production rates for $q\bar{q}$ and gg as a function of the kinematical variables, for example in dP_T and thereby in LL - LR .

The above description of the pomeron is an extreme case in the sense that its gluons are treated asymmetrically. The exclusive meson production then arises when one "hard" gluon from one pomeron fuses with a gluon from the other pomeron. These two gluons have a large relative p_L and in consequence are much separated in δx ; this disfavors exclusive production. An alternative extreme, which can reduce this penalty, is where the two gluons within a single pomeron cooperate in being strongly aligned, both in p_L and p_T . In this case we can regard the initial proton beam as a source of pomerons, analogous to the way that an electron beam is a source of photons. Consider the process in the laboratory frame: the pomerons then scatter "diffractively" in the colour singlet gluonic field of the target (Fig. 2b) analogous to the diffractive photoproduction of vector mesons. With the pomeron having $C = +$ we anticipate that this mechanism will favourably produce $J^{PC} = 0^{++}, 2^{++}$ glueballs (which are the lightest according to lattice QCD). The pomeron can in principle also convert into $J^{PC} = 0^{++}, 2^{++}$ $q\bar{q}$ mesons in this process analogous to the photon turning into $J^{PC} = 1^{--}$ $q\bar{q}$. However, for t and $q_T' \rightarrow 0$, diffractive photoproduction appears

to produce only 3S_1 rather than 3D_1 configurations, suggesting that the excitation of internal angular momenta in the $q\bar{q}$ system is suppressed. If this is a guide to what happens with an initial pomeron “beam” in place of a photon, then one may expect that in this kinematic region the $^3P_{0,2} q\bar{q}$ will be disfavoured relative to their glueball counterparts for which these J^{PC} can be realised in S -wave.

The kinematics and experimental triggers cannot access this “ideal” situation and require \mathbf{p}'_T and \mathbf{q}'_T to be non-zero. When the \mathbf{p}'_T and \mathbf{q}'_T are co-moving and of equal magnitude such that $dP_T \rightarrow 0$, they tend to produce an overall transverse boost of the meson R but with limited relative (internal) momentum: the resulting configuration for R will be strongly coupled to an S -state. By contrast, when the \mathbf{p}'_T and \mathbf{q}'_T are equal in magnitude but anti-aligned (so dP_T is large) then there can be significant relative l_T ($\sim dP_T$) within R . Note that in the laboratory frame R is moving overall with large p_L and that excitation of the l_T degree of freedom corresponds to P -wave (and higher orbitals) in the static limit. Thus by making the selection on data that $dP_T \rightarrow 0$, there is the possibility that $q\bar{q}$ with $J^{PC} = 0^{++}, 1^{++}, 2^{++}$ (which are all P -wave composites) will be suppressed relative to glueballs (or at least, relative to S -wave bound states of bosons with these J^{PC}). In effect, the Bialas-Landshoff topology encounters the penalty of mismatched p_L , which disfavours exclusive meson production at large M_R ; the alternate topology dilutes this problem in p_L but in p_T it remains. It is this which is varied via dP_T and which can govern the relative importance of S and P (or higher) wave states.

If this is realised then we expect $f_1(1285)$, $f_2(1270)$ inter alia to be suppressed as $dP_T \rightarrow 0$; we expect f_0 $^3P_0 q\bar{q}$ to be suppressed similarly whereas $f_0(1500) \equiv gg$ or $f_0(980) \equiv K\bar{K}$ would be able to survive. Conversely, at larger dP_T the production of gg and $q\bar{q}$ can be competitive, their relative production rates being dependent on their detailed internal wavefunctions and the relative importance of the collinear versus asymmetric (hard gluon) production mechanisms.

The above intuitive picture is at best only a first sketch of the full dynamics but at least it provides a starting point that is qualitatively consistent with the pattern of the LL and LR topologies. Intuitively one expects that the LL configuration will contain a large

sample with comparatively small relative transverse momentum and hence $dP_T \rightarrow 0$ favouring the glueballs. In contrast, the LR topology will have a tendency for rather larger relative transverse momentum, thereby necessitating greater momentum transfer in the exclusive meson production vertex; thus for this case one will expect both gg or $q\bar{q}$ production to occur. The relative emergence of the glueball candidates compared to the established $f_1(1285) q\bar{q}$ in Fig. 1 are in accord with this. However, if it is the dP_T variable that underpins the $LL - LR$ effect, then there should be a more marked effect when the data are selected directly as a function of $dP_T = |\mathbf{p}'_T - \mathbf{q}'_T|$. Accordingly we have done so and present the results for the 4π channel in Fig. 3.

The $dP_T \geq 0.5$ GeV (Fig. 3a) is similar to the original LR sample as expected. The sample with $0.2 \text{ GeV} \leq dP_T \leq 0.5 \text{ GeV}$ (Fig. 3b) shows the $f_1(1285)$ becoming suppressed and a sharpening of the $f_0(1500)$ and $f_2(1900)$ structures. However, the most dramatic effect is seen in the $dP_T \leq 0.2$ GeV sample (Fig. 3c) where the $f_1(1285)$, a $q\bar{q}$ state, has essentially disappeared while the $f_0(1500)$ and $f_2(1900)$ structures have become more clear. (This is driven by $dP_T \rightarrow 0$ and is not an artifact of Bose symmetry, as might have occurred if the pomeron-photon analogy were exact: if we select $t_1 \neq t_2$, the $f_1(1285)$ still disappears as $dP_T \rightarrow 0$.) These surviving structures have been identified as glueball candidates: the $f_0(1500)$ is motivated by lattice QCD while the $f_2(1900)$ is noted to have the right mass to lie on the pomeron trajectory [17].

The $f_0(1500)$ is rather clean and appears at $dP_T \rightarrow 0$ with a shape and mass that are not inconsistent with what is seen in $p\bar{p}$ annihilation. This is in contrast to the full data sample of the present experiment where this state interfered with the $f_0(1370)$ and was shifted to a lower mass (~ 1440 MeV) [6] and with a much narrower width (~ 60 MeV). The emergence in Fig. 2c of a more canonical $f_0(1500)$ [7] suggests, at least implicitly, that the $f_0(1370) q\bar{q}$ [18] state has become suppressed as $dP_T \rightarrow 0$ while the (gg candidate) $f_0(1500)$ has survived. It is important that experiments now verify if this is indeed the case.

Similar cuts have been applied to the $\pi\pi$, $K\bar{K}$ and $K\bar{K}\pi$ data (see the following paper [1]). The $f_1(1285)$ and $f_1(1420)$ are seen in the channel $K\bar{K}\pi$ when $dP_T > 0.5 \text{ GeV}$ but vanish when $dP_T \rightarrow 0$

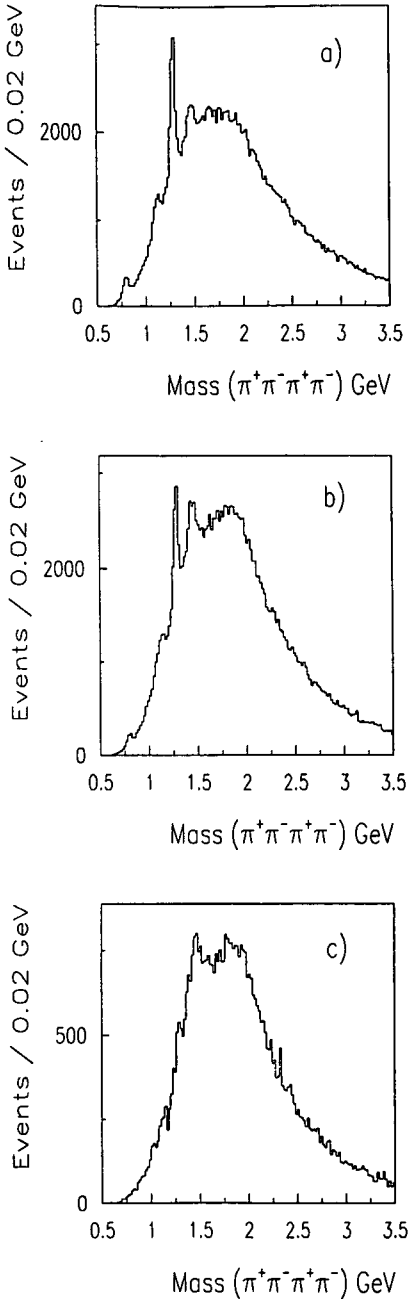


Fig. 3. The 4π mass spectra (i) With $dP_T > 0.5$ GeV exhibiting a clear $f_1(1285)$; (ii) $0.2 < dP_T < 0.5$ GeV (iii) $dP_T < 0.2$ GeV where the $f_1(1285)$ has disappeared while the $f_0(1500)$ is seen more clearly.

in line with ${}^3P_1 q\bar{q}$. We note that there are no 1^{++} resonances visible in this limit, in line with lattice QCD which predicts that there are no 1^{++} glueballs below ~ 3.5 GeV [19]. In the $\pi\pi$ channel we see the $f_2(1270)$ when $dP_T > 0.5$ GeV. This vanishes as $dP_T \rightarrow 0$ as expected for ${}^3P_2 q\bar{q}$. The survival of $f_0(980)$ is significant and we suggest that this shows its affinity for coupling via S -wave bosons. This could be due to a gg presence or to $K\bar{K}$ in its wavefunction [20,21]; at the present level of analysis we are unable to distinguish between these alternatives.

Summarising, we have stumbled upon a remarkable feature of central meson production that does not appear to have been noticed previously. Although its extraction via the dP_T cut was inspired by intuitive arguments following the observation of an $LL - LR$ asymmetry, we have no simple dynamical explanation. Nonetheless, the empirical message is dramatic enough to stand alone and thereby we suggest that a systematic study of meson production as a function of $dP_T \equiv |\mathbf{p}'_T - \mathbf{q}'_T|$ holds special promise for isolating the systematics of meson production in the central region and in filtering $q\bar{q}$ mesons from those with significant *boson-boson* content. The latter include $K\bar{K}$ molecular bound states (or $s\bar{s}$ states with significant $K\bar{K}$ component in the wavefunction), *pomeron-pomeron* states and *glueballs*. Our selection procedure will need to be tested further in future experiments in order to determine the extent of its empirical validity. In turn we hope thereby that its dynamical foundations may be put on a sounder footing and the filtering of glueballs be made a practical reality.

F.E.C. is partially supported by the European Community Human Mobility Program Eurodafne, Contract CHRX-CT92-0026 and is grateful to the WA102 Collaboration for this interaction.

References

- [1] D. Barberis et al., WA102 Collaboration, December 1996.
- [2] F.E. Close, Proc. LEAP96, hep-ph/9610426
- [3] R. Landua, Proc. XXVIII Int. Conf. High Energy Physics, Warsaw, July 1996.
- [4] G. Bali et al. (UKQCD), Phys. Lett. B 309 (1993) 378; D. Weingarten, hep-lat/9608070; J. Sexton et al., Phys. Rev. Lett. 75 (1995) 4563; F.E. Close and M.J. Teper, On the lightest Scalar Glueball,

- Rutherford Appleton Laboratory report no. RAL-96-040;
Oxford University report no. OUTF-96-35P
- [5] V.V. Anisovich et al., *B* 323 (1994) 233;
C. Amsler et al., *Phys. Lett. B* 342 (1994) 433; *B* 291 (1992) 347; *B* 340 (1994) 259;
D.V. Bugg et al., *Phys. Lett. B* 353 (1995) 378;
D. Alde et al., *Phys. Lett. B* 201 (1988) 160.
- [6] F. Antinori et al., WA91 Collaboration, *Phys. Lett. B* 353 (1995) 589.
- [7] Particle Data Group, *Phys. Rev. D* 54 (1996) 1.
- [8] D. Robson, *Nucl. Phys. B* 130 (1977) 328;
F.E. Close, *Rep. Prog. Phys.* 51 (1988) 833.
- [9] F.E. Low *Phys. Rev. D* 12 (1975) 163;
S. Nussinov *Phys. Rev. D* 14 (1976) 246;
P.V. Landshoff and O. Nachtmann, *Z. Phys. C* 35 (1987) 405;
A. Donnachie and P.V. Landshoff, *Nucl. Phys. B* 311 (1988) 509;
A. Bialas and P.V. Landshoff *Phys. Lett. B* 256 (1991) 540.
- [10] D. Barberis et al., WA91 Collaboration, *Phys. Lett. B* 388 (1996) 853.
- [11] G. Gutierrez, talk at LEAP96 (unpublished)
- [12] A. Breakstone et al., *Z. Phys. C* 48 (1990) 569.
- [13] G.P. Lepage, in: *Particles and Fields*, Vol. 2, eds. A.Z. Capri and A.N. Kamal (Plenum, New York, 1983) p. 83;
S.J. Brodsky, in: *Particles and Fields*, Vol. 2, eds. A.Z. Capri and A.N. Kamal (Plenum, New York, 1983) p.143.
- [14] H.J. Weber, *Ann. Phys.* 177 (1987) 38;
Z. Dziembowski, *Phys. Rev. D* 37 (1988) 768.
- [15] S.J. Brodsky and G. Farrar, *Phys. Rev. Lett.* 31 (1973) 1153.
- [16] M.R. Pennington (private communication);
N. Brown and M.R. Pennington *Phys. Rev. D* 38 (1988) 2266.
- [17] P.V. Landshoff, private communication.
S. Abatzis et al *Phys. Lett. B* 324 (1994) 529.
- [18] C. Amsler and F.E. Close, *Phys. Lett. B* 353 (1995) 385;
Phys. Rev. D 53 (1996) 295.
- [19] C. Michael and M. Teper, *Nucl. Phys. B* 305 (1988) 453;
G.S. Bali et al (UKQCD) *Phys. Lett. B* 309 (1993) 378.
- [20] J. Weinstein and N. Isgur, *Phys. Rev. D* 27 (1983) 588.
- [21] N. Tornqvist, *Z. Phys. C* 68 (1995) 647.

PHYSICS LETTERS B

Instructions to Authors (short version)

(A more detailed version of these instructions is published in the preliminary pages to each volume.)

Submission of papers

Manuscripts (one original + two copies), accompanied by a covering letter, should be sent to one of the Editors indicated on page 2 of the cover.

Original material. By submitting a paper for publication in Physics Letters B the authors imply that the material has not been published previously nor has been submitted for publication elsewhere and that the authors have obtained the necessary authority for publication.

Refereeing. Submitted papers will be refereed and, if necessary, authors may be invited to revise their manuscript. If a submitted paper relies heavily on unpublished material, it would be helpful to have a copy of that material for the use of the referee.

Types of contributions

Letters. The total length of the paper should preferably not exceed six journal pages, equivalent to ten typewritten pages with double spacing, including the list of authors, abstract, references, figure captions and three figures. In the case that more figures are required, the text should be shortened accordingly. As proofs will *not* be sent, authors should check their papers carefully before submission.

Manuscript preparation

All manuscripts should be written in good English. The paper copies of the text should be prepared with double line spacing and wide margins, on numbered sheets. See notes opposite on electronic version of manuscripts.

Structure. Please adhere to the following order of presentation: Article title, Author(s), Affiliation(s), Abstract, Classification codes and keywords, Main text, Acknowledgements, Appendices, References, Figure captions, Tables.

Corresponding author. The name, complete postal address, telephone and fax numbers and the e-mail address of the corresponding author should be given on the first page of the manuscript.

Classification codes/keywords. Please supply one to four classification codes (PACS and/or MSC) and up to six keywords of your own choice that describe the content of your article in more detail.

References. References to other work should be consecutively numbered in the text using square brackets and listed by number in the Reference list. Please refer to the more detailed instructions for examples.

Illustrations

Illustrations should also be submitted in triplicate: one master set and two sets of copies. The *line drawings* in the master set should be original laser printer or plotter output or drawn in black india ink, with careful lettering, large enough (3–5 mm) to remain legible after reduction for printing. The *photographs* should be originals, with somewhat more contrast than is required in the printed version. They should be unmounted unless part of a composite figure. Any scale markers should be inserted on the photograph, not drawn below it.

Colour plates. Figures may be published in colour, if this is judged essential by the Editor. The Publisher and the author will each bear part of the extra costs involved. Further information is available from the Publisher.

After acceptance

Notification. You will be notified by the Editor of the journal of the acceptance of your article and invited to supply an electronic version of the accepted text, if this is not already available.

Copyright transfer. You will be asked to transfer the copyright of the article to the Publisher. This transfer will ensure the widest possible dissemination of information.

No proofs. In order to speed up publication, all proofreading will be done by the Publisher and proofs are *not* sent to the author(s).

Electronic manuscripts

The Publisher welcomes the receipt of an electronic version of your accepted manuscript (preferably encoded in LaTeX). If you have not already supplied the final, revised version of your article (on diskette) to the journal Editor, you are requested herewith to send a file with the text of the accepted manuscript directly to the Publisher by e-mail or on diskette (allowed formats 3.5" or 5.25" MS-DOS, or 3.5" Macintosh) to the address given below. Please note that no deviations from the version accepted by the Editor of the journal are permissible without the prior and explicit approval by the Editor. Such changes should be clearly indicated on an accompanying printout of the file.

Author benefits

No page charges. Publishing in Physics Letters B is free.

Free offprints. The corresponding author will receive 50 offprints free of charge. An offprint order form will be supplied by the Publisher for ordering any additional paid offprints.

Discount. Contributors to Elsevier Science journals are entitled to a 30% discount on all Elsevier Science books.

Contents Alert. Physics Letters B is included in Elsevier's pre-publication service Contents Alert.

Further information (after acceptance)

Elsevier Science B.V., Physics Letters B
Issue Management
Physics and Materials Science
P.O. Box 2759, 1000 CT Amsterdam
The Netherlands
Tel.: + 31 20 485 2634
Fax: + 31 20 485 2319
E-mail: NHPDESKED@ELSEVIER.NL



North-Holland, an imprint of Elsevier Science