

EDUCATION QUALITY ASSESSMENT PROGRAMME (EQAP)



USE OF EDUCATION INFORMATION REVIEW



Pacific
Community
Communauté
du Pacifique



UNIVERSITY OF
ALBERTA

**Australian
Aid** 

BACKGROUND

In the Pacific Community (SPC), educational data are essential to inform a broad spectrum of stakeholders including Ministries of Education and Finance, teachers and principals, regional and international development partners, and local communities. All require high-quality and timely information to make informed decisions on planning, policy and programme development, and resource allocation.

Educational Management Information Systems (EMIS) are now being introduced into many island countries — including the Solomon Islands, Kiribati and Vanuatu — for these purposes.

Different levels of data use are forecast in EMIS plans. the lower the level of decision making the higher the level of detail and quantity of data that is required. The quantity of data required decreases at higher levels of decision-making, the information becoming more integrated and useable.

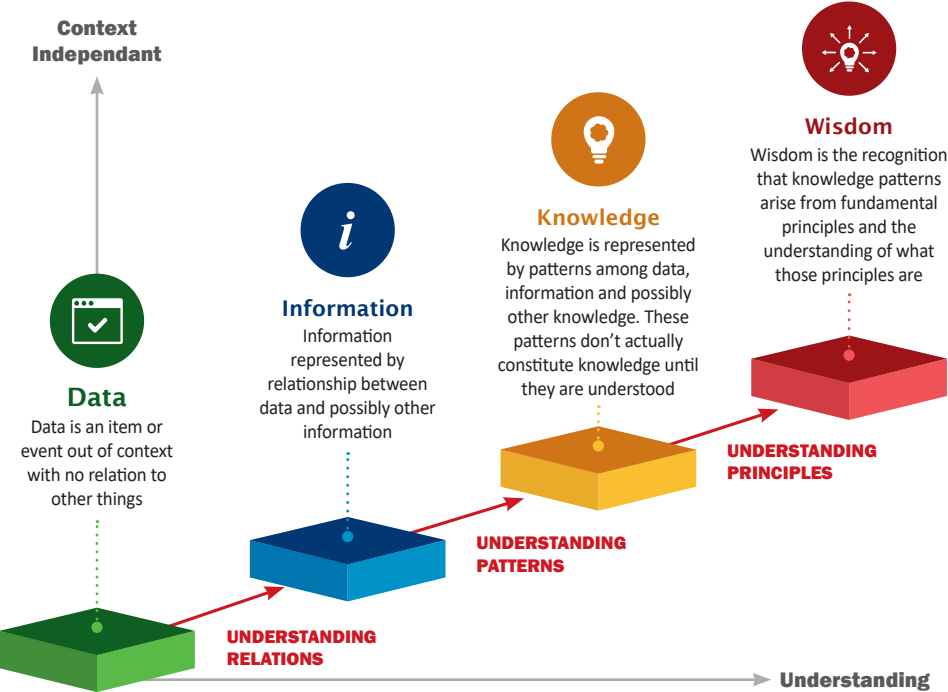


Fig 1: Clarifying data, information, knowledge, and wisdom

SPC has planned and prepared officials from three countries to review data use in each country’s political and economic context during the September to November 2017 period. Final reports will be relayed to Permanent Secretaries, in December 2017, by SPC.

The project has adopted an overarching United Nations Development Program (UNDP) framework, as guided by a consultant from the University of Alberta, Canada.

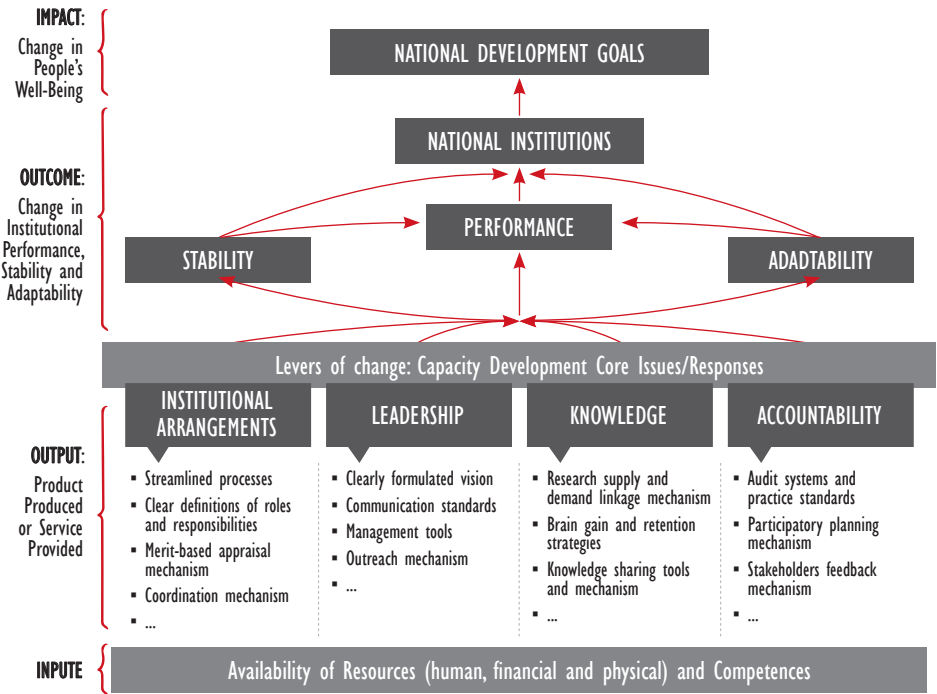


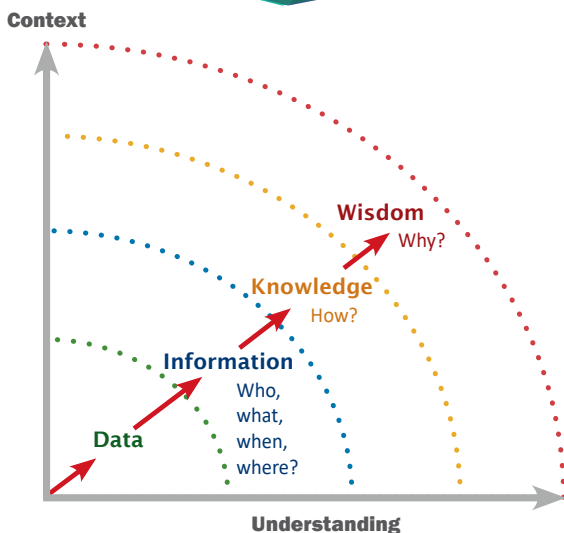
Fig 2: Framework for measuring capacity

PROJECT ELEMENTS:

- Twelve senior government officials in each of Solomon Islands, Vanuatu and Kiribati will be invited to participate in one-hour September interviews. Interview questions will focus on senior officials' beliefs and behaviours about education statistics. These same officials will also be invited to complete a 50 minute, 55 question, multiple-choice, online survey.
- Twelve other officials will complete only the online survey. Confidentiality is assured. Among those invited will be the Minister, the Permanent Secretaries and executive members of the Ministries of Education and Finance, a third ministry or sector, and elected officials.
- The interviews and surveys will position the country on a single global scale or rubric which considers the use of EMIS statistics, education statistics, financial data and census information. A rubric is a statement of criterion levels of data use. The five criterion levels in the rubric (1=low/5=high) will be used to describe where the

country sits in EMIS data use and will guide planning into the future.

- Fifteen indicators of data use will be established and tracked over the next five years. The purpose of the project is to better understand the beliefs and behaviours of senior officials about statistics and their use in educational decision-making.



KEY MESSAGES:

- Senior government officials rely on high quality data in educational policy-making and decision-making.
- SPC will conduct a review in three countries to better understand senior managers' beliefs, attitudes and actions in collaboration with the Governments of Solomon Islands, Kiribati and Vanuatu.
- At least twenty-four senior officials, including Ministers, Permanent Secretaries, elected officials, and cross sectoral leaders will be invited to participate from the Ministries of Education and Finance, and from political circles.

