



Simone Martini

Sienese, active from 1315; died 1344

## *Saint Matthew*

c. 1315/1320

tempera on panel

painted surface: 26.4 x 19.6 cm (10 3/8 x 7 11/16 in.)

overall: 30.8 x 23.2 cm (12 1/8 x 9 1/8 in.)

framed: 44.4 x 60 cm (17 1/2 x 23 5/8 in.)

Inscription: on the left side of the Saint: .SCS.; on the right side of the Saint: MATHEVs.

Samuel H. Kress Collection 1952.5.23

### ENTRY

This panel and its three companions at the Gallery—*Saint Simon*, *Saint James Major*, and *Saint Judas Thaddeus*—together with six other busts of apostles [fig. 1] [fig. 2] [fig. 3] [fig. 4] [fig. 5] [fig. 6] [fig. 7] [fig. 8] [fig. 9] [fig. 10],[1] originally formed part of a polyptych. The ten panels, acquired as a group by Johann Anton Ramboux in the early nineteenth century, remained together until the 1920s, when they were deaccessioned by the Wallraf-Richartz Museum in Cologne and dispersed.

The horizontal graining of the wood of the support in all ten panels suggests they are fragments of a predella.[2] The type of predella formed of busts of saints placed below round arches is rather archaic: in fact, it appears in Sienese painting no later than the years around 1320. Subsequently, preference was given instead to the insertion of narrative scenes in the predella; if busts of saints were included in the program, they were usually inserted in circular or mixtilinear medallions surrounded by painted ornamental motifs.[3] The absence from this series of busts of two of the most venerated apostles, Peter and John, may suggest that these panels were already lost at the time of Ramboux's acquisition of the panels, together with a bust of Christ (or Christ on the Cross) that normally formed the central image of predellas decorated with busts of saints.[4] But it is more likely that the series of apostles in the predella was originally incomplete and that the images of Peter and John were separated from the rest and incorporated in the main register of the altarpiece, as was the case, for example, in *Duccio's Maestà* .[5] As for the sequence of the individual figures, it seems probable that the

apostles Andrew and James Major would have been placed closer to the center (and hence in a position of particular emphasis), and that the images of Matthew, Thomas, Simon, and Thaddeus would have been placed closer to the two ends.[6]

As for the painter of these busts of apostles, an attribution to the Sienese master Lippo Memmi (Sienese, active 1317/1347) was supported by Ramboux in the catalog of his collection (1862).[7] This was endorsed by the older studies, beginning with Joseph Archer Crowe and Giovan Battista Cavalcaselle (1864) and ending with Louis Gielly (1926).[8] It was only when the ten panels reentered the art market that the more prestigious name of Simone Martini was proposed by Robert Lehman (1928) and then by others.[9] Art historians generally accepted the attribution to Simone, though more often than not with the qualifier “shop of” or “school of” Simone.[10] The catalog of the National Gallery of Art also cited the four panels presented by the Kress Collection as works of “Simone Martini and assistants.” The attribution to Lippo Memmi, however, was never wholly discarded and has more recently been revived.[11] Proposed dates vary between c. 1320 and 1333.[12]

The attempts in recent decades to unite the catalogs of paintings previously assembled respectively under the names of Lippo Memmi and Barna da Siena, as well as under the nebulous formulae “Companions of Simone,” “Lippo and Tederico Memmi,” or “shop of Memmi” have complicated the matter of distinguishing among the paintings executed within the orbits of Simone Martini and Lippo Memmi and have made Lippo’s artistic development difficult to understand.[13] Inextricably linked to this issue, the chronology of the series of apostles discussed here remains equally problematic. To judge from the works signed and dated [14] by Lippo in the years between c. 1323 and 1333, the insertion in his oeuvre of the four busts of apostles in the Gallery seems far from convincing. The softness of the modeling and the spontaneous naturalness of the saints’ gestures recall more readily the manner of his brother-in-law (Simone Martini) than the solemn poses, polished forms, and metallic sheen that often distinguish the works of Lippo himself.

Of the series of apostles of which the four panels in the Gallery form part, the Saint Andrew now in the Metropolitan Museum of Art in New York [fig. 11] has close affinities, both in physiognomic type and in his rather surly expression, with the apostle, presumably Saint Andrew as well, in the Museum of Fine Arts in Boston, unanimously recognized as Simone’s work.[15] The Saint Judas Thaddeus [fig. 12] in the Gallery similarly invites comparison with the image of the same saint in Simone’s polyptych in the Museo Nazionale di San Matteo in Pisa.[16] In both

images the apostle is presented as a beardless youth who turns towards the arch of the frame with a slight Gothic bend, his head bowed to one side in an attitude of meditation. It cannot be said categorically, however, that the version painted for the polyptych of Pisa around 1319–1320 was the model for the painting in the Gallery, given that the contours of the figure and the drapery folds in the latter are far less agitated, following the stylistic models of previous works by Simone that still fall into the second decade of the century.[17] Comparison with the corresponding figures in the Pisa polyptych remains telling, however, and can also be extended to the representations of Saints Matthew and Simon. Simon is represented as still a young man, with a short, dark beard, while Matthew is a man of middle age in frontal position, with a long, forked beard. Matthew is shown in both paintings in the process of writing his Gospel. Less closely resembling his counterpart in the Washington panel is the Saint James Major of the Pisa polyptych, where we may observe the tendency, absent in the panels discussed here, to present the apostles in movement, to envelop their bodies in voluminous mantles that cast deep folds, and to place sharply foreshortened books in their hands. In the Pisa polyptych the books are in general more voluminous and open, and represented in such a way that some lines of calligraphy are visible. The saints, moreover, often seem to be conversing with one another, accompanying or enforcing their remarks with raised hand or exhibiting an object that not infrequently interrupts the outer contour of the figure, set against the gold ground, as if backlit.

Might the reduced emphasis on agitated rhythms and elegant gestures in the busts of apostles in the Gallery and in their companion panels imply a dating for them prior to the Pisa polyptych? Unfortunately, “objective data” deriving from the use of punch marks help us little in this case, since according to Mojmir S. Frinta’s survey (1998), the punched motifs present in the panels now divided between the Metropolitan Museum of Art [fig. 11] [fig. 13] [fig. 14] [fig. 15] and the Gallery recur virtually throughout the entire oeuvre of Simone Martini, from the San Gimignano polyptych to the Annunciation in the Uffizi, Florence (1333), and beyond.[18] It might be more fruitful to concentrate attention instead on another aspect, namely the fact that Simone, as far as we are able to judge today, generally avoided the use of the round arch in his altarpieces. This motif appears for the last time in the youthful polyptych from San Gimignano, while in later works the arch, if it is not Gothic, is enriched with small trefoil arches on the inside, as in the Pisa polyptych. Not only is the framing of the National Gallery of Art panels very similar to that of the components of the predella of the Saint Louis of Toulouse in Naples (painted in

c. 1317, the year of the saint's canonization), but also their stylistic character is consistent with that of the works realized in the years of rapid development between the Maestà in the Palazzo Pubblico (1315) and the Pisan polyptych of 1319–1320.

These considerations raise the question of identifying the altarpiece of which the ten busts of apostles formed part. Michael Mallory (1974) argued that the four Washington panels, together with their six companion panels in other collections, were in origin the predella of the polyptych by Lippo Memmi of which *Saint John the Baptist* in the Gallery also formed part.[19] The proposal has not met with acceptance in the art historical literature, but no alternative hypotheses have yet been formulated. A possible candidate for the lost central panel of the polyptych of which the series of busts of apostles formed part could be, in the present writer's opinion, the Madonna and Child from the church of Santa Maria Maddalena at Castiglion d'Orcia, now in the Museo Civico e Diocesano at Montalcino (80 × 61 cm).[20] The width of the panel is not very different from that of the images placed at the center of Simone's polyptychs executed for churches in Pisa, Orvieto, or San Gimignano, and its height is also close to that from San Gimignano, now deprived of its original frame. So there is nothing to prevent us from imagining the Montalcino Madonna at the center of a similar polyptych and with a series of apostles in its predella. Our panels share with it not only a similar date but also the external profile terminating in a round arch.

In conclusion, the ten panels of the apostles can, I believe, be firmly attributed to Simone Martini. In the past scholars have generally undervalued these panels, not as a consequence of any intrinsic mediocrity but because of the loss of the pictorial finishes in some of them, flattening the modeling of the figures, and the unhappy result of successive restorations that have obscured many of the more exquisite touches of the pictorial technique, especially in the busts of Saints Bartholomew, Matthias, and Thomas now in the Metropolitan Museum of Art. However, the better-preserved passages in our panels, in particular in the faces of Saints Thaddeus and James Major, still retain qualities that, in the view of the present writer, seem fully worthy of the hand of Simone.

---

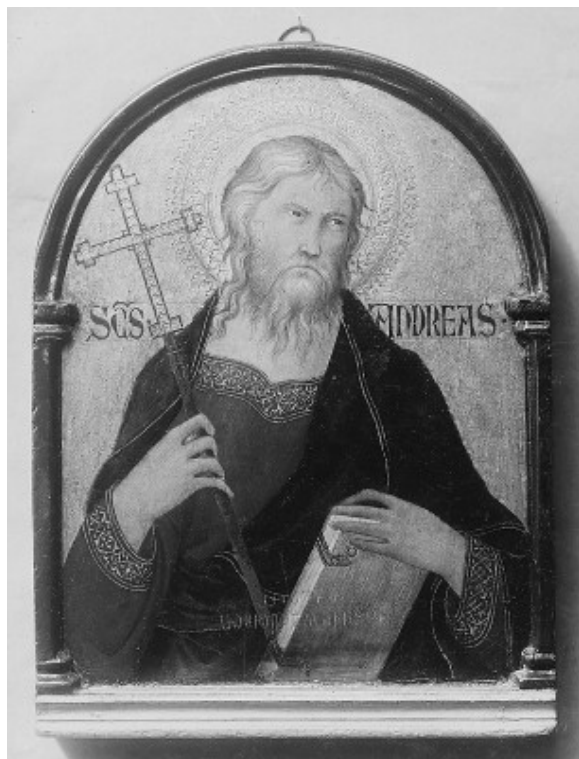
**COMPARATIVE FIGURES**



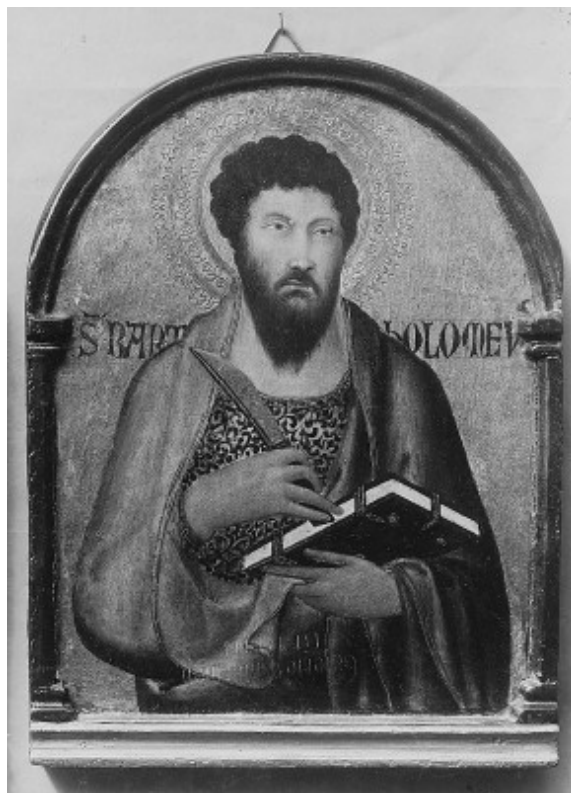
**fig. 1** Archival photograph, c. 1925, old state, Simone Martini, *Saint Judas Thaddeus*, c. 1315/1320, tempera on panel, National Gallery of Art, Washington, Samuel H. Kress Collection. Image: Galerie van Diemen, Berlin



**fig. 2** Archival photograph, c. 1925, old state, Simone Martini, *Saint Simon*, c. 1315/1320, tempera on panel, National Gallery of Art, Washington, Samuel H. Kress Collection. Image: Galerie van Diemen, Berlin

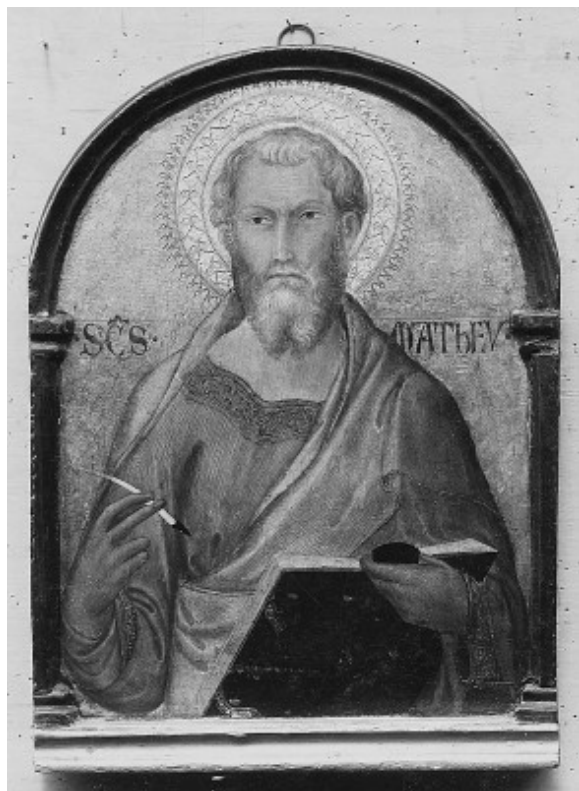


**fig. 3** Archival photograph, c. 1925, old state, Simone Martini, *Saint Andrew*, c. 1315/1320, tempera on panel, The Metropolitan Museum of Art, New York, Maitland F. Griggs Collection, Bequest of Maitland F. Griggs, 1943. Image: Galerie van Diemen, Berlin

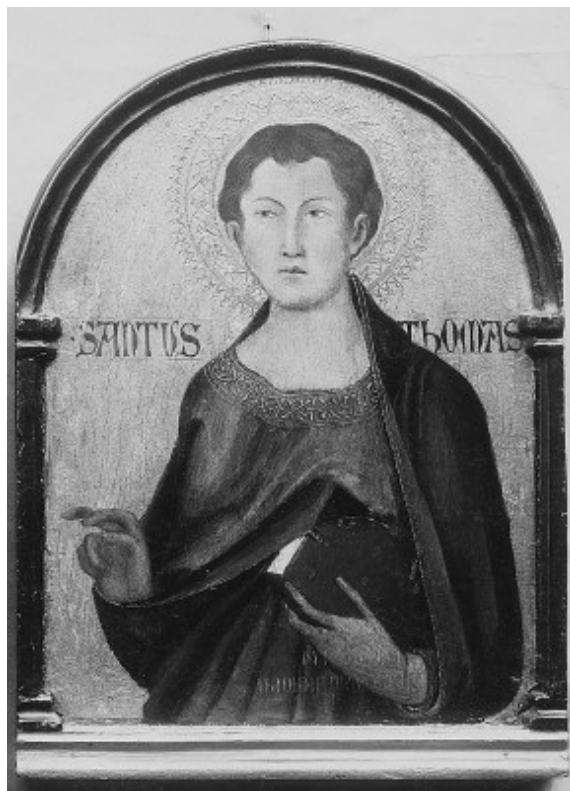


**fig. 4** Archival photograph, c. 1925, old state, Simone Martini, *Saint Bartholomew*, c. 1315/1320, tempera on panel, The Metropolitan Museum of Art, New York, Maitland F. Griggs Collection, Bequest of Maitland F. Griggs, 1943. Image: Galerie van Diemen, Berlin

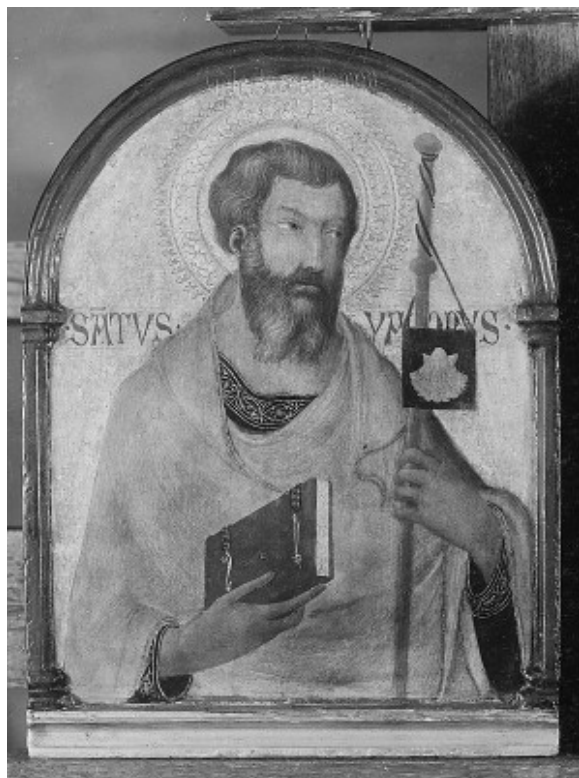




**fig. 5** Archival photograph, c. 1925, old state, Simone Martini, *Saint Matthew*, c. 1315/1320, tempera on panel, National Gallery of Art, Washington, Samuel H. Kress Collection. Image: Galerie van Diemen, Berlin



**fig. 6** Archival photograph, c. 1925, old state, Simone Martini, *Saint Thomas*, c. 1315/1320, tempera on panel, The Metropolitan Museum of Art, New York, Maitland F. Griggs Collection, Bequest of Maitland F. Griggs, 1943. Image: Galerie van Diemen, Berlin



**fig. 7** Archival photograph, c. 1925, old state, Simone Martini, *Saint James Major*, c. 1315/1320, tempera on panel, National Gallery of Art, Washington, Samuel H. Kress Collection. Image: Galerie van Diemen, Berlin



**fig. 8** Archival photograph, c. 1925, old state, Simone Martini, *Saint Philip*, c. 1315/1320, tempera on panel, location unknown. Image: Galerie van Diemen, Berlin





**fig. 9** Archival photograph, c. 1925, old state, Simone Martini, *Saint James Minor*, c. 1315/1320, tempera on panel, Salini collection, Castello di Gallico, Asciano, Siena. Image: Galerie van Diemen, Berlin



**fig. 10** Archival photograph, c. 1925, old state, Simone Martini, *Saint Matthias*, c. 1315/1320, tempera on panel, The Metropolitan Museum of Art, New York, Maitland F. Griggs Collection, Bequest of Maitland F. Griggs, 1943. Image: Galerie van Diemen, Berlin



**fig. 11** Simone Martini, *Saint Andrew*, c. 1315/1320, tempera on panel, The Metropolitan Museum of Art, New York, Maitland F. Griggs Collection, Bequest of Maitland F. Griggs, 1943



**fig. 12** Detail, Simone Martini, *Saint Judas Thaddeus*, c. 1315/1320, tempera on panel, National Gallery of Art, Washington, Samuel H. Kress Collection



**fig. 13** Simone Martini, *Saint Bartholomew*, c. 1315/1320, tempera on panel, The Metropolitan Museum of Art, New York, Maitland F. Griggs Collection, Bequest of Maitland F. Griggs, 1943



**fig. 14** Simone Martini, *Saint Matthias*, c. 1315/1320, tempera on panel, The Metropolitan Museum of Art, New York, Maitland F. Griggs Collection, Bequest of Maitland F. Griggs, 1943





**fig. 15** Simone Martini, *Saint Thomas*, c. 1315/1320, tempera on panel, The Metropolitan Museum of Art, New York, Maitland F. Griggs Collection, Bequest of Maitland F. Griggs, 1943

---

## NOTES

- [1] In 1924, Maitland Fuller Griggs, acquired four panels of the series—Saints Thomas, Bartholomew, Matthias, and Andrew—through Edward Hutton, and these entered the Metropolitan Museum, New York, in 1943. The bust of Saint James Minor (fig. 9) belonged to the Stoclet Collection in Brussels at least since 1927, and since 2005 it has belonged to the Salini collection at Castello di Gallico (Asciano). Philip Lehman purchased the image of Saint Philip (fig. 8) along with the four panels discussed here before 1928. The Saint Philip was sold at auction at Christie's in New York on January 11, 1991 (lot 12). It was purchased by Carlo de Carlo (Florence), in whose collection it remained until 1999; its present whereabouts are unknown.

- [2] The predella, especially in large-size altarpieces in Tuscany, was almost always painted on a single timber with grain running horizontally, separated from the wooden support of the main panels. The top tier of images above the main register, on the other hand, was frequently painted on the same vertically grained panel as the main register itself. See John White, *Duccio: Tuscan Art and the Medieval Workshop* (New York, 1979), 89–91; Christoph Merzenich, *Vom Schreinerwerk zum Gemälde: Florentiner Altarwerke der ersten Hälfte des Quattrocento* (Berlin, 2001), 55. The following scholars maintained that the panels formed part of the predella of a polyptych: Lionello Venturi, *Pitture italiane in America* (Milan, 1931), no. 60; Lionello Venturi, *Italian Paintings in America*, trans. Countess Vanden Heuvel and Charles Marriott, 3 vols. (New York and Milan, 1933), 1: no. 76; George McCall, *Masterpieces of Art: Catalogue of European Paintings and Sculpture from 1300–1800*, ed. Wilhelm R. Valentiner (New York, 1939), 116–117; Michael Mallory, “An Altarpiece by Lippo Memmi Reconsidered,” *Metropolitan Museum Journal* 9 (1974): 201 n. 19; Michel Laclotte, in *Retables italiens du XIIIe au XVe siècle*, ed. Claude Ressay, Sylvia Beguin, and Michel Laclotte (Paris, 1978), 19; Fern Rusk Shapley, *Catalogue of the Italian Paintings*, 2 vols. (Washington, DC, 1979), 1:332, 333 n. 7; Andrew Martindale, *Simone Martini* (Oxford, 1988), 35 n. 18; Cristina De Benedictis, *Lippo Memmi in Enciclopedia dell’arte medievale*, Rome, 1996, 7:732. De Benedictis (1974) initially argued, as Federico Zeri (1980) did, that they belonged instead to the upper register of a polyptych. Gertrude Coor (1956) thought that both solutions were possible, as did Sabina Spannocchi (2009). See Cristina De Benedictis, “A proposito di un libro su Buffalmacco,” *Antichità viva* 13, no. 2 (1974): 8, 10 n. 13; Federico Zeri and Elizabeth E. Gardner, *Italian Paintings: Sienese and Central Italian Schools; A Catalogue of the Collection of the Metropolitan Museum of Art* (New York, 1980), 95; Gertrude Coor, “Trecento–Gemälde aus der Sammlung Ramboux,” *Wallraf–Richartz–Jahrbuch* 18 (1956): 118; and Sabina Spannocchi, in *La collezione Salini: Dipinti, sculture e oreficerie dei secoli XII, XIII, XIV e XV*, ed. Luciano Bellosi, 2 vols. (Florence, 2009), 1:135.
- [3] Examples of the predella type with busts of saints set in round-arched frames are Simone Martini’s polyptych now in the Museo Nazionale in Pisa (1319–1320); that of Ugolino di Nerio in the Museo Nazionale in Lucca, datable to c. 1320; and that of Meo da Siena, also dating to around 1315–1320, now in the Pinacoteca Nazionale of Perugia. Cf. James H. Stubblebine, *Duccio di Buoninsegna and His School*, 2 vols. (Princeton, 1979), 2: fig. 375; and Francesco Santi, ed., *Galleria Nazionale dell’Umbria*, vol. 1, *Dipinti, sculture e oggetti d’arte di età romanica e gotica* (Rome, 1969), 58–59. Predellas with medallions surrounded by floriated motifs, by contrast, were used by Giotto in his polyptychs in the Baroncelli Chapel in Santa Croce in Florence and in the Pinacoteca Nazionale in Bologna in the years 1325–1335, and, among Sienese artists, by Ugolino di Nerio in the



predella now in the Musée des Beaux-Arts at Besançon (see Stubblebine 1979, fig. 465), and by *Bartolomeo Bulgarini* in the predella of his polyptych formerly in Santa Croce, now in the storerooms of the Gallerie Fiorentine; see Raimond van Marle, *The Development of the Italian Schools of Painting*, vol. 2, *The Sienese School of the 14th Century* (The Hague, 1924), fig. 72. Sometimes, as in Simone Martini's altarpiece of Saint Louis of Toulouse in the Museo di Capodimonte at Naples (1317), the round arches of the predella contain not the busts of saints but small narrative scenes. Perhaps the practice of adding a predella containing busts of saints to small devotional paintings originated in the shops of Simone and Lippo (cf. the Madonna in the Isabella Stewart Gardner Museum, Boston, no. P. 30 w 8, or the Crucifixion no. 156 of the Pinacoteca Vaticana). It seems to reflect a type of altarpiece similar to that of Simone in Naples: paintings, that is, with a single scene (instead of several panels with figures of saints) in the main register.

- [4] However, sometimes, as in the above-cited predella of Meo da Siena's polyptych, Christ does not appear among the apostles, and the center of the sequence of busts of apostles is occupied instead by Saints Peter and Paul.
- [5] In Duccio's masterpiece, the large scene representing the Madonna and Child flanked by saints and angels is surmounted by a horizontal second register of half-length saints (from left to right): the busts of Saints Thaddeus, Simon, Philip, James Major, Andrew, Matthew, James Minor, Bartholomew, Thomas, and Matthias. The apostles Peter and Paul, and John the Evangelist, on the other hand, are represented, together with the Baptist, as full-length figures flanking the throne of the Madonna.
- [6] In his analysis of the problem of the sequence of busts, Giovanni Previtali (1987) proposed the following order, from left to right: Matthias, Thomas, Bartholomew, James (Minor or Major), Matthew, Andrew, James[?], Philip, Simon, and Thaddeus, observing that this would be the exact reverse of the order followed by Duccio in representing the ten apostles in the *Maestà* and by Simone Martini in the predella of the Pisa polyptych, in which Peter and Paul are naturally added to the ten, in a central position (John the Evangelist appears here among the saints in the main register). See Giovanni Previtali, "Problems in the Workshop of Simone Martini," *Center/National Gallery of Art, Center for Advanced Study in the Visual Arts* 7 (1987): 83–84. But the sequence represented in the works of Duccio and Simone Martini is not the only possible one. For example, Simone represented the apostles in the *Maestà* he frescoed in the Palazzo Pubblico in Siena in the order of: Bartholomew, Philip, Matthew, Thomas, James Minor, James Major, Matthias, Andrew, Thaddeus, and Simon (with Paul, John the Evangelist, John the Baptist, and Peter placed in the foreground); for the identification of the apostles, cf. Alessandro Bagnoli, *La Maestà di Simone Martini* (Cinisello Balsamo, Milan, 1999), 155–157. Different again is the sequence of apostles adopted by Giotto in the Last Judgment of the Scrovegni Chapel in

Padua, and in the Stefaneschi polyptych in the Pinacoteca Vaticana; cf. Margrit Lisner, "Die Gewandfarben der Apostel in Giotto's Arenafresken: Farbgebung und Farbikonographie mit Notizen zu älteren Aposteldarstellungen in Florenz, Assisi und Rom," *Zeitschrift für Kunstgeschichte* 53 (1990): 309–375; and Margrit Lisner, "Giotto und die Aufträge des Kardinals Jacopo Stefaneschi für Alt-St. Peter: 2; der Stefaneschi-Altar; Giotto und seine Werkstatt in Rom; das Altarwerk und der verlorene Christuszyklus in der Petersapsis," *Römisches Jahrbuch der Bibliotheca Hertziana* 30 (1995): 59–133. Only the central position of Peter, Paul, and John (if they form part of the series), as well as James Major and Andrew, holds good as a general rule.

- [7] *Katalog der Gemälde Alter italienischer Meister (1221–1640) in der Sammlung des Conservator J.A. Ramboux* (Cologne, 1862), 15, no. 75.
- [8] Joseph Archer Crowe and Giovan Battista Cavalcaselle, *A New History of Painting in Italy from the Second to the Sixteenth Century*, 3 vols. (London, 1864–1866), 2:105; Louis Gielly, *Les primitifs siennois* (Paris, 1926), 111.
- [9] At least as regards the panels that entered the Griggs collection in New York through Edward Hutton, the attribution to Simone presumably had been made by the dealer/amateur Hutton himself. The Saint James Minor also seems to have entered the Stoclet collection in Brussels with an attribution to Simone; cf. Pierre Bautier, "I primitivi italiani della collezione Stoclet a Bruxelles," *Cronache d'arte* 4 (1927): 315. August L. Mayer (1930) further accepted Simone Martini's authorship for the panels then in the Lehman collection, as did George McCall and William Valentiner. August L. Mayer, "Die Sammlung Philip Lehman," *Pantheon* 5 (1930): 113; George McCall, *Masterpieces of Art: Catalogue of European Paintings and Sculpture from 1300–1800*, ed. Wilhelm R. Valentiner (New York, 1939), 116–117.
- [10] Perhaps having been asked by Maitland Fuller Griggs in 1926 for his expertise, Richard Offner orally ascribed the four panels acquired for that collection as "school of Simone Martini," while in 1926 Raimond van Marle, in a manuscript opinion, attributed the paintings to an "immediate follower of Simone Martini." See Federico Zeri and Elizabeth E. Gardner, *Italian Paintings: Sienese and Central Italian Schools; A Catalogue of the Collection of the Metropolitan Museum of Art* (New York, 1980), 96. Intervening in 1932 and then in 1936, and in the posthumous edition of 1968, Bernard Berenson (who in 1925 had conjectured the authorship of the young Lippo Vanni (Sienese, active 1344 - 1376); for his expertise, see Zeri and Gardner 1980, 96) defined the image of Saint Matthew as at least in part by Simone, but classified the other four panels of the series in the Lehman collection as works of the artist's shop. F. Mason Perkins (1937) thought the Lehman panels in large part executed by Simone's assistants. The participation of the artist's assistants was also detected in the paintings by

Gertrude Coor (1956), in *Exposition de la collection Lehman 1957*, by Fern Rusk Shapley (1966), by Joseph Polzer (1971), by Burton B. Fredericksen and Zeri (1972), by Zeri and Gardner (1980), by Giovanni Previtali (1987), by Mojmir S. Frinta (1998), by Hiltrud Kier and Frank Günter Zehnder (1998), and by Alessandro Bagnoli (1999). Even the recent catalog entry by Sabina Spannocchi (in Bellosi 2009), although citing the series of apostles under Simone's name, considered it executed in part by assistants "under the surveillance" of the master. See Bernard Berenson, *Italian Pictures of the Renaissance: A List of the Principal Artists and Their Works with an Index of Places* (Oxford, 1932), 534; Bernard Berenson, *Pitture italiane del rinascimento: Catalogo dei principali artisti e delle loro opere con un indice dei luoghi*, trans. Emilio Cecchi (Milan, 1936), 459; Bernard Berenson, *Italian Pictures of the Renaissance: Central Italian and North Italian Schools*, 3 vols. (London, 1968), 1:404; F. Mason Perkins, "Simone di Martino (Simone Martini)," in *Allgemeines Lexikon der bildenden Künstler von der Antike bis zur Gegenwart*, ed. Ulrich Thieme, Felix Becker, and Hans Vollmer, 37 vols. (Leipzig, 1937), 31:67; Gertrude Coor, "Trecento—Gemälde aus der Sammlung Ramboux," *Wallraf-Richartz-Jahrbuch* 18 (1956): 118; *Exposition de la Collection Lehman de New York* (Paris, 1957), 43; Fern Rusk Shapley, *Paintings from the Samuel H. Kress Collection: Italian Schools, XIII–XV Century* (London, 1966), 48–49; Joseph Polzer, "Observations on Known Paintings and a New Altarpiece by Francesco Traini," *Pantheon* 29 (1971): 386; Burton B. Fredericksen and Federico Zeri, *Census of Pre-Nineteenth-Century Italian Paintings in North American Public Collections* (Cambridge, MA, 1972), 122; Federico Zeri, in *Italian Paintings: Sienese and Central Italian Schools; A Catalogue of the Collection of the Metropolitan Museum of Art*, ed. Federico Zeri and Elizabeth E. Gardner (New York, 1980), 95; Giovanni Previtali, "Problems in the Workshop of Simone Martini," *Center/National Gallery of Art, Center for Advanced Study in the Visual Arts* 7 (1987): 83–84; Mojmir Svatopluk Frinta, *Punched Decoration on Late Medieval Panel and Miniature Painting* (Prague, 1998), 118, 189, 205, 311, 321, 400, 444, 453; Hiltrud Kier and Frank Günter Zehnder, ed., *Lust und Verlust*, vol. 2, *Corpus—Band zu Kölner Gemäldesammlungen 1800–1860* (Cologne, 1998), 551–552; Alessandro Bagnoli, *La Maestà di Simone Martini* (Cinisello Balsamo, Milan, 1999) 156 n. 24, 179; and Sabina Spannocchi, in *La collezione Salini: Dipinti, sculture e oreficerie dei secoli XII, XIII, XIV e XV*, ed. Luciano Bellosi, 2 vols. (Florence, 2009), 1:132–141.

- [11] Lionello Venturi (1931, 1933) revived the attribution to Lippo Memmi, followed by Pietro Toesca (1951), Maria Cristina Gozzoli (in Contini and Gozzoli 1970), Cristina De Benedictis (1974, 1979, 1996), Michael Mallory (1974), Michel Laclotte (1978), and Andrew Martindale (1988). The present writer (1988) limited himself to rejecting the ascription of the panels to Lippo Memmi, without offering any alternative attribution. See Lionello Venturi, *Pitture italiane in America* (Milan, 1931), nos. 60–61; Lionello Venturi, *Italian*

*Paintings in America*, trans. Countess Vanden Heuvel and Charles Marriott, 3 vols. (New York and Milan, 1933), 1: nos. 76–77; Pietro Toesca, *Il Trecento*, Storia dell'arte classica e italiana 3; Storia dell'arte italiana 2 (Turin, 1951), 551 n. 75; Maria Cristina Gozzoli, in *L'opera completa di Simone Martini*, ed. Gianfranco Contini and Maria Cristina Gozzoli (Milan, 1970), 105 n. 53; Cristina De Benedictis, "A proposito di un libro su Buffalmacco," *Antichità viva* 13, no. 2 (1974): 8, 10 n. 13; Cristina De Benedictis, *La pittura senese 1330–1370* (Florence, 1979), 93; Cristina De Benedictis, "Lippo Memmi," in *Enciclopedia dell'arte medievale*, 12 vols. (Rome, 1996), 7:732; Michael Mallory, "An Altarpiece by Lippo Memmi Reconsidered," *Metropolitan Museum Journal* 9 (1974): 201, n. 19; Michel Laclotte, in *Retables italiens du XIIIe au XVe siècle*, ed. Claude Ressay, Sylvia Beguin, and Michel Laclotte (Paris, 1978), 19; Andrew Martindale, *Simone Martini* (Oxford, 1988), 35 n. 18; Miklós Boskovits, ed., *Frühe italienische Malerei: Gemäldegalerie Berlin, Katalog der Gemälde*, trans. Erich Schleier (Berlin, 1988), 75.

- [12] Fern Rusk Shapley (1966, 1979) and Giovanni Previtali (1987) proposed the date c. 1320; Cristina De Benedictis (1974), 1325—i.e., the date of the lost polyptych by Lippo Memmi for San Paolo a Ripa d'Arno in Pisa—or, more cautiously (De Benedictis 1996), after 1323, the presumable date of the *Triumph of Saint Thomas* in San Domenico at Pisa. Michael Mallory (1974) dated the series c. 1330; Federico Zeri and Elizabeth Gardner (1980), to the period between c. 1320 and 1333. Sabina Spannocchi (2009) suggested the date of execution as c. 1317. See Fern Rusk Shapley, *Paintings from the Samuel H. Kress Collection: Italian Schools, XIII–XV Century* (London, 1966), 48–49; Fern Rusk Shapley, *Catalogue of the Italian Paintings*, 2 vols. (Washington, DC, 1979), 1:332, 333 n. 7; Giovanni Previtali, "Problems in the Workshop of Simone Martini," *Center/National Gallery of Art, Center for Advanced Study in the Visual Arts* 7 (1987): 83–84; Cristina De Benedictis, "A proposito di un libro su Buffalmacco," *Antichità viva* 13, no. 2 (1974): 8, 10 n. 13; Cristina De Benedictis, "Lippo Memmi," in *Enciclopedia dell'arte medievale*, 12 vols. (Rome, 1996), 7:732; Michael Mallory, "An Altarpiece by Lippo Memmi Reconsidered," *Metropolitan Museum Journal* 9 (1974): 201 n. 19; Federico Zeri and Elizabeth E. Gardner, *Italian Paintings: Sienese and Central Italian Schools; A Catalogue of the Collection of the Metropolitan Museum of Art* (New York, 1980), 95; Sabina Spannocchi, in *La collezione Salini: Dipinti, sculture e oreficerie dei secoli XII, XIII, XIV e XV*, ed. Luciano Bellosi, 2 vols. (Florence, 2009), 1:139.

- [13] After the publications by Gordon Moran (1976), who was the first to cast doubt on whether a painter called Barna da Siena had ever existed—according to him, the name was an erroneous transcription of Bartolo di Fredi—and that of Antonino Caleca (1976, 1977), who argued that the works formerly attributed to "Barna" should be reassigned to the catalog of Lippo Memmi, art historians have gone their separate ways in trying to identify the

masters of the paintings left orphans after Barna's "demise." Luciano Bellosi (1977) wrote of the "Famiglia Memmi" as a kind of family concern, while Carlo Volpe (1982) considered probable Moran's hypothesis attributing the paintings to Federico Memmi, brother of Lippo. Giovanna Damiani (1985) maintained that "la firma di Lippo Memmi corrisponda...ad una sorta di etichetta che indica anziché l'attività di una personalità artistica, quella di una bottega comprendente Lippo e Federico Memmi e che doveva avere al suo attivo anche personalità minori" (Lippo Memmi's signature corresponds to a kind of label that indicates not the activity of an artistic personality but the activity of a workshop comprising Lippo and Federico Memmi and that must have included minor figures as well). Returning to the question, Bellosi (1985) thought it right to "riconsiderare unitariamente tutta la produzione che fa capo al prestigioso atelier familiare di Simone Martini, ivi comprese le opere attribuite a Lippo e a Barna" (reconsider integrally the entire production of the prestigious family workshop headed by Simone Martini, including the works attributed to Lippo and Barna). Previtali (1988) went further, affirming that "lo stile che siamo soliti chiamare 'Barna'...sta a Simone un po' come lo stile dei manieristi sta a quello di Michelangiolo" (the style that we are accustomed to calling Barna is to Simone a bit as the style of the mannerists is to Michelangelo). Previtali also proposed, albeit with caution, that some works usually attributed to Lippo be reassigned to Simone himself. To Leone de Castris (1988), a "distinzione puntuale fra le opere di 'Barna'" (precise distinction between the works of "Barna")—in his view probably executed by a presumed Tederico Memmi—and those of the "Maestro della Madonna Straus," another anonymous Simonesque painter, seemed to be "operazione assai difficoltosa" (a rather difficult task). Miklós Boskovits (2008) and Ada Labriola (2008) insisted on the necessity of restoring to Lippo Memmi the paintings attributed to Barna, but Sabina Spannocchi (2009) still preferred to speak of the "cosidetto Barna" (the so-called Barna). See Gordan Moran, "Is the Name Barna an Incorrect Transcription of the Name Bartolo?" *Paragone* 27 (1976): 76–80; Antonio Caleca, "Tre polittici di Lippo Memmi, un'ipotesi sul Barna e la bottega di Simone e Lippo, 1," *Critica d'arte* 41 (1976): 49–59; Antonio Caleca, "Tre polittici di Lippo Memmi, un'ipotesi sul Barna e la bottega di Simone e Lippo, 2," *Critica d'arte* 42 (1977): 55–80; Luciano Bellosi, "Moda e cronologia: B) per la pittura di primo Trecento," *Prospettiva* 11 (1977): 21; Carlo Volpe, in *Il gotico a Siena: Miniature, pitture, oreficerie, oggetti d'art* (Florence, 1982), 186–187; Giovanna Damiani, in *Simone Martini e "chompagni,"* ed. Alessandro Bagnoli and Luciano Bellosi (Florence, 1985), 82–85; Luciano Bellosi, in *Simone Martini e "chompagni,"* ed. Alessandro Bagnoli and Luciano Bellosi (Florence, 1985), 94–102; Giovanni Previtali, "Introduzione ai problemi della bottega di Simone Martini," in *Simone Martini: Atti del convegno; Siena, March 27–29, 1985*, ed. Luciano Bellosi (Florence, 1988), 160–161; Pierluigi Leone De Castris, "Problemi martiniani avignonesi: Il



‘Maestro degli angeli ribelli,’ i due Ceccarelli ed altro,” in *Simone Martini: Atti del convegno; Siena, March 27–29, 1985*, ed. Luciano Bellosi (Florence, 1988), 230 n. 10; Miklós Boskovits, in *Maestri senesi e toscani nel Lindenau-Museum di Altenburg*, ed. Miklós Boskovits and Johannes Tripps (Siena, 2008), 26; Ada Labriola, *Simone Martini e la pittura gotica a Siena: Duccio di Buoninsegna, Memmo di Filippuccio, Pietro Lorenzetti, Ugolino di Nerio, Ambrogio Lorenzetti, Lippo Memmi, Matteo Giovanetti, Naddo Ceccarelli, Bartolomeo Bulgarini, Niccolò di ser Sozzo* (Florence, 2008), 56–58; and Sabina Spannocchi, in *La collezione Salini: Dipinti, sculture e oreficerie dei secoli XII, XIII, XIV e XV*, ed. Luciano Bellosi, 2 vols. (Florence, 2009), 1:141.

- [14] The *Madonna della Misericordia* in Orvieto Cathedral, signed “Lippus de Sena natus nos pinxit amena,” is not dated but in general is thought to have been executed around 1320. Cf. Giovanni Previtali, “Introduzione ai problemi della bottega di Simone Martini,” in *Simone Martini: Atti del convegno; Siena, March 27–29, 1985*, ed. Luciano Bellosi (Florence, 1988), 156; Cristina De Benedictis, “Lippo Memmi,” in *Enciclopedia dell’arte medievale*, 12 vols. (Rome, 1996), 7:732; and Pierluigi Leone De Castris, *Simone Martini* (Milan, 2003), 176–177. The Madonna and Child in the Lindenau-Museum in Altenburg is usually dated slightly later; see Joseph Polzer, “Symon Martini et Lippus Memmi me pinxerunt,” in *Simone Martini: Atti del convegno; Siena, March 27–29, 1985*, ed. Luciano Bellosi (Florence, 1988), 168; De Benedictis (1996, 7:732); Pierluigi Leone De Castris, *Simone Martini* (Milan, 2003), 217 n. 41; and Johannes Tripps, in *Maestri senesi e toscani nel Lindenau-Museum di Altenburg*, ed. Miklós Boskovits and Johannes Tripps (Siena, 2008), 49. For the diptych divided between the Gemäldegalerie in Berlin and a private collection that bears the date 1333, see Millard Meiss, “Notes on a Dated Diptych by Lippo Memmi,” in *Scritti di storia dell’arte in onore di Ugo Procacci*, ed. Maria Grazia Ciardi Dupré Dal Poggetto and Paolo Dal Poggetto, 2 vols. (Milan, 1977), 1:137–139; Miklós Boskovits, ed., *Frühe italienische Malerei: Gemäldegalerie Berlin, Katalog der Gemälde*, trans. Erich Schleier (Berlin, 1988), 76.

- [15] No. 51.2397; Laurence B. Kanter, *Italian Paintings in the Museum of Fine Arts, Boston*, vol. 1, *13th–15th Century* (Boston, 1994), 84, accepted the dating of the work shared by most art historians, to the early 1320s. Boskovits had already proposed in 1990 a comparison between the two images of the saint. Miklós Boskovits, “Review of Simone Martini by Andrew Martindale,” *Kunstchronik* 43 (1990): 595–601.

- [16] The date of the altarpiece is variously indicated as 1319 or 1320. Both dates are derived from the same source: the sixteenth-century *Annali* of the Dominican convent in Pisa, which record the placing of the polyptych over the high altar of the church of Santa Caterina in 1320. But this date, if calculated according to the Pisan style in use at the time the polyptych was painted, could be equivalent to 1319 in the modern calendar. Cf. Pierluigi

Leone De Castris, *Simone Martini* (Milan, 2003), 352.

- [17] Art historians in recent decades generally have agreed on dating the frescoes with half-length figures of saints in the northern transept of the lower church of San Francesco in Assisi to the years 1315–1320. Cf. Maria Cristina Gozzoli, in *L'opera completa di Simone Martini*, ed. Gianfranco Contini and Maria Cristina Gozzoli (Milan, 1970), 94–95; Luciano Bellosi, “La barba di San Francesco: Nuove proposte per il ‘problema di Assisi,’” *Prospettiva* 22 (1980): 13–14; and Carlo Volpe, in *Il Gotico a Siena: Miniature, pitture,oreficerie, oggetti d'arte* (Florence, 1982), 179. A similar dating is proposed for the polyptych formerly in Sant'Agostino at San Gimignano; cf. Cristina De Benedictis, “Pittura e miniatura del Duecento e del Trecento in terra di Siena,” in *La Pittura in Italia: Il Duecento e il Trecento*, ed. Enrico Castelnuovo, 2 vols. (Milan, 1986), 1:337–339; Andrew Martindale, *Simone Martini* (Oxford, 1988), 200–202 n. 23; Pierluigi Leone De Castris, *Simone Martini* (Milan, 2003), 349. The polyptych now divided between the Metropolitan Museum of Art in New York (no. 41.100.23, Lehman Collection, no. 1975.1.12 and 13), the Thyssen-Bornemisza Museum in Madrid, and the J. Paul Getty Museum in Los Angeles (no. 82.PB.72) is usually dated to the 1320s, but the present writer prefers an earlier dating, towards the mid-1310s; cf. Miklós Boskovits, “Da Duccio a Simone Martini,” in *Medioevo: La chiesa e il palazzo; Atti del convegno internazionale di studi, Parma, September 20–24, 2005*, ed. Arturo Carlo Quintavalle (Milan, 2007), 577.
- [18] The punch marks in the four Washington panels are registered as follows by Mojmir Svatopluk Frinta, *Punched Decoration on Late Medieval Panel and Miniature Painting* (Prague, 1998): “Da10a” (present in works by Simone Martini from the San Gimignano polyptych to the late Orsini quadriptych and in various works of Lippo Memmi), 117–119; “Ea1” (present in paintings by Simone with a presumable provenance from Orvieto, in the Orsini quadriptych, and in works by Lippo), 189; “Fd14a” (used in a similar way as the preceding punches); “I16a” (used in Simone’s polyptych divided among the J. Paul Getty Museum, the Thyssen-Bornemisza Museum, and the Metropolitan Museum of Art, in the Uffizi Annunciation, and in panels attributed to Lippo), 205; “I70” (present in paintings between the Orvieto phase and the Uffizi Annunciation, and in works by Lippo), 321; “Jb59” (present in works of Simone’s Orvieto phase and in the Orsini quadriptych, but not found in authenticated paintings by Lippo), 388; “Jc15” (present in paintings of Simone’s Orvieto phase, the Uffizi Annunciation, and in works by Lippo), 400–401; “Ka27a” (again present in paintings of Simone’s Orvieto phase, the Uffizi Annunciation, and in various works by Lippo), 444; and “Ka63” (used in a similar way as the previous punch), 453–454.
- [19] Michael Mallory, “An Altarpiece by Lippo Memmi Reconsidered,” *Metropolitan Museum Journal* 9 (1974): 201 n. 19.
- [20] The Madonna formerly at Castiglion d’Orcia was not necessarily painted for

that town and was variously attributed in the past. Serena Padovani (1979) attributed it to Simone, and Alessandro Bagnoli (1997) accepted the attribution, whereas Leone de Castris (2003) thought it was painted “in buona parte” by studio assistants of Simone and dated it to the early 1320s. With regard to the dating of the painting, it should be borne in mind that Frinta (1998) found in it a punch mark present in various works by Simone executed during his period in Orvieto, as well as in the Pisa polyptych of 1319–1320, and in the San Gimignano polyptych. See Serena Padovani, “Una tavola di Castiglione d’Orcia restaurata di recente,” *Prospettiva* 17 (1979): 82–88; Alessandro Bagnoli, *Museo civico e diocesano d’arte sacra di Montalcino* (Siena, 1997), 33, 35; Pierluigi Leone De Castris, *Simone Martini* (Milan, 2003), 209, 354; Mojmir Svatopluk Frinta, *Punched Decoration on Late Medieval Panel and Miniature Painting* (Prague, 1998), 428.

---

## TECHNICAL SUMMARY

This painting and its three companions, *Saint Simon*, *Saint James Major*, and *Saint Judas Thaddeus*, were executed on panels apparently made of a single piece of wood with horizontal grain, which has been thinned to 2.5 cm thick, backed, and cradled. Stephen Pichetto applied the backings and cradles in 1944, at which time he may also have thinned the panels and added the wooden strips that are currently affixed to all sides of each. The inner molding of the arch as well as the capitals and bases of the engaged frame surrounding the painted surface of each panel are original. Before the painting process, the panels were covered with a fabric interleaf, on which a layer of gesso ground was applied. The areas to be gilded were prepared with red bole and the halos decorated with punch marks—those in *Saint Matthew* and *Saint Simon* extend onto the top arches of the engaged frames. Incised lines were used to demarcate the figures; a green underpainting was laid in beneath the flesh tones; and the paint was applied with fine, unblended brushstrokes. Infrared reflectography at 1.2 to 5 microns shows a linear underdrawing in the figures’ hands but not in their clothing, except in *Saint Judas Thaddeus*, in which all the folds in the saint’s cloak were delineated in a liquid medium.[1] Mordant gilding was used for embellishing the borders of the saints’ robes and the bosses and clasps of their books. The books are further decorated with punch marks, and a black material, which might have been silver, has been applied over the gilded clasps and bosses.

The painted surfaces of all four panels are slightly worn but in fair state apart from a number of small, scattered losses largely associated with the damages to the supports and the removal of parts of the original engaged frames and moldings along the borders. Two small repairs are visible in the gold ground in *Saint Matthew*, and retouchings around the saint's throat, chest, and shoulders have discolored. Retouching in *Saint Simon* mostly affects the saint's right cheek and left shoulder. Vertical and diagonal cracks, with attendant minor paint loss, are more prominent along the bottom edge of *Saint James Major*, while retouching in *Saint Judas Thaddeus* is largely confined to the saint's face and book. The lettering of the inscriptions in all four panels has been reinforced. When he applied the cradles in 1944, Stephen Pichetto also "cleaned, restored, and varnished" the paintings. Robert Lehman (1928) mentioned an earlier cleaning, probably in the early 1920s.[2]

---

## TECHNICAL NOTES

- [1] Infrared reflectography was performed using a Mitsubishi M600 focal plane array PtSi camera.
- [2] Robert Lehman, *The Philip Lehman Collection, New York* (Paris, 1928), n.p., stated that the panels "were covered by an old varnish which has lately been removed." For the intervention in 1944, see Fern Rusk Shapley, *Catalogue of the Italian Paintings*, 2 vols. (Washington, DC, 1979), 1:433.
- 

## PROVENANCE

Acquired between 1832 and 1842 by Johann Anton Ramboux [1790-1866], Cologne, together with six other components of the same series, presumably in Siena;[1] (his estate sale, J.M. Heberle, Cologne, 23 May 1867, no. 75 [all ten panels], as by Lippo Memmi);[2] the whole series purchased by the Wallraf-Richartz-Museum, Cologne, which deaccessioned it in 1922-1923;[3] the four NGA panels, 1952.5.23-.26, purchased together with a fifth panel of the same series, by Philip Lehman [1861-1947], New York, by 1928;[4] the four NGA panels sold June 1943 to the Samuel H. Kress Foundation, New York;[5] gift 1952 to the NGA. [1] Ramboux built up his huge collection of early Italian pictures essentially in the above-mentioned years of his second period of residence in Italy; see Christoph Merzenich, "*Di diletanza per un artista - Der Sammler Antonio Giovanni Ramboux*

in der Toskana," in *Lust und Verlust*, edited by Hiltrud Kier and Frank Günter Zehnder, 2 vols., Cologne, 1995-1998: 1(1995): 303-314. [2] Without quoting their provenance, the sale catalogue entry states only that the ten busts "... stimmen im Ausdruck wie in der übrigen Technik mit den Wandmalereien im Stadthause zu Sangemini überein." [3] See Kier and Zehnder 1995-1998, 2(1998): 550-552. [4] The four panels in Washington and a fifth, representing *Saint Philip*, are included in the catalogue of the Lehman collection (Robert Lehman, *The Philip Lehman Collection*, New York, Paris, 1928: nos. xix-xxiii). Possibly, Philip Lehman acquired them through Edward Hutton in London, who also handled the panels of the series now in The Metropolitan Museum of Art in New York. [5] The bill of sale for the Kress Foundation's purchase of fifteen paintings from the Lehman collection, including NGA 1952.5.23-26, is dated 11 June 1943; payment was made four days later (copy in NGA curatorial files). The documents concerning the 1943 sale all indicate that Philip Lehman's son Robert Lehman (1892-1963) was owner of the paintings, but it is not clear in the Lehman Collection archives at the Metropolitan Museum of Art, New York, whether Robert made the sale for his father or on his own behalf. See Laurence Kanter's e-mail of 6 May 2011, about ownership of the Lehman collection, in NGA curatorial files.

---

## EXHIBITION HISTORY

1939 Masterpieces of Art. European Paintings and Sculpture from 1300-1800, New York World's Fair, 1939, no. 239.

1946 Recent Additions to the Kress Collection, National Gallery of Art, Washington, D.C., 1946, no. 820.

---

## BIBLIOGRAPHY

- 1862 *Katalog der Gemälde Alter italienischer Meister (1221-1640) in der Sammlung des Conservator J. A. Ramboux*. Cologne, 1862: 15, no. 75.
- 1864 Crowe, Joseph Archer, and Giovan Battista Cavalcaselle. *A New History of Painting in Italy from the Second to the Sixteenth Century*. 3 vols. London, 1864-1866: 2(1864):105.
- 1867 Heberle, J. M. *Catalog der nachgelassenen Kunst-Sammlungen des Herrn Johann Anton Ramboux*. Cologne, 23 May 1867: 17, no. 75.
- 1869 Niessen, Johannes. *Verzeichniss der Gemälde-Sammlung des Museums*



- Wallraf-Richartz in Köln*. Cologne, 1869: 137.
- 1897 Berenson, Bernard. *The Central Italian Painters of the Renaissance*. New York, 1897: 148.
- 1903 Crowe, Joseph Archer, and Giovan Battista Cavalcaselle. *A History of Painting in Italy from the Second to the Sixteenth Century*. 6 vols. Edited by Robert Langton Douglas (vols. 1-4) and Tancred Borenius (vols. 5-6). Vol. 3, *The Sienese, Umbrian, and North Italian Schools*. London, 1903-1914: 3(1908):76, 76-77 n. 5.
- 1907 Perkins, Frederick Mason. "Simone di Martino (Simone Martini)." In *Allgemeines Lexikon der bildenden Künstler von der Antike bis zur Gegenwart*. Edited by Ulrich Thieme and Felix Becker. 37 vols. Leipzig, 1907-1950: 31(1937):67.
- 1907 Venturi, Adolfo. *Storia dell'arte italiana*. Vol. 5, *La pittura del Trecento e le sue origini*. Milan, 1907: 666-667 n. 1.
- 1909 Berenson, Bernard. *The Central Italian Painters of the Renaissance*. 2nd ed. New York, 1909: 202.
- 1926 Gielly, Louis. *Les primitifs siennois*. Paris, 1926: 111.
- 1928 Lehman, Robert. *The Philip Lehman Collection, New York: Paintings*. Paris, 1928: no. XXIII, repro.
- 1930 Mayer, August L. "Die Sammlung Philip Lehman." *Pantheon* 5 (1930): 113.
- 1931 Venturi, Lionello. *Pitture italiane in America*. Milan, 1931: no. 60, repro.
- 1932 Berenson, Bernard. *Italian Pictures of the Renaissance: A List of the Principal Artists and their Works with an Index of Places*. Oxford, 1932: 534.
- 1932 Marle, Raimond van. *Le scuole della pittura italiana*. 2 vols. The Hague and Florence, 1932-1934: 2(1934):258 n.
- 1933 Venturi, Lionello. *Italian Paintings in America*. Translated by Countess Vanden Heuvel and Charles Marriott. 3 vols. New York and Milan, 1933: 1:no. 76, repro.
- 1936 Berenson, Bernard. *Pitture italiane del rinascimento: catalogo dei principali artisti e delle loro opere con un indice dei luoghi*. Translated by Emilio Cecchi. Milan, 1936: 459.
- 1939 McCall, George. *Masterpieces of Art. Catalogue of European Paintings and Sculpture from 1300-1800*. Edited by Wilhelm R. Valentiner. Exh. cat. World's Fair, New York, 1939: 116-117, no. 239.
- 1945 *Paintings and Sculpture from the Kress Collection*. National Gallery of Art, Washington, 1945 (reprinted 1947, 1949): 17, repro., as by Simone Martini and Assistants.
- 1946 Douglas, Robert Langton. "Recent Additions to the Kress Collection." *The Burlington Magazine for Connoisseurs* 88 (1946): 85.
- 1951 Einstein, Lewis. *Looking at Italian Pictures in the National Gallery of Art*. Washington, 1951: 25.
- 1951 Toesca, Pietro. *Il Trecento*. *Storia dell'arte italiana*, 2. Turin, 1951: 551 n. 75.

- 1956 Coor, Gertrude. "Trecento-Gemälde aus der Sammlung Ramboux." *Wallraf-Richartz-Jahrbuch* 18 (1956): 118.
- 1957 *Exposition de la Collection Lehman de New York*. Exh. cat. Musée de l'Orangerie, Paris, 1957: 43.
- 1959 *Paintings and Sculpture from the Samuel H. Kress Collection*. National Gallery of Art, Washington, 1959: 32, repro., as by Simone Martini and Assistants.
- 1965 *Summary Catalogue of European Paintings and Sculpture*. National Gallery of Art, Washington, 1965: 123, as by Simone Martini and Assistants.
- 1966 Shapley, Fern Rusk. *Paintings from the Samuel H. Kress Collection: Italian Schools, XIII-XV Century*. London, 1966: 48-49, fig. 125.
- 1968 Berenson, Bernard. *Italian Pictures of the Renaissance. Central Italian and North Italian Schools*. 3 vols. London, 1968: 1:404.
- 1968 *European Paintings and Sculpture, Illustrations*. National Gallery of Art, Washington, 1968: 110, repro., as by Simone Martini and Assistants.
- 1970 Contini, Gianfranco, and Maria Cristina Gozzoli. *L'opera completa di Simone Martini*. Milan, 1970: 105 no. 53, repro.
- 1971 Polzer, Joseph. "Observations on Known Paintings and a New Altarpiece by Francesco Traini." *Pantheon* 29 (1971): 386.
- 1972 Fredericksen, Burton B., and Federico Zeri. *Census of Pre-Nineteenth Century Italian Paintings in North American Public Collections*. Cambridge, Mass., 1972: 122, 432, 646, 665.
- 1974 De Benedictis, Cristina. "A proposito di un libro su Buffalmacco." *Antichità viva* 13, no. 2 (1974): 8 (repro.), 10 n. 13.
- 1974 Mallory, Michael. "An Altarpiece by Lippo Memmi Reconsidered." *Metropolitan Museum Journal* 9 (1974): 201 n. 19.
- 1975 *European Paintings: An Illustrated Summary Catalogue*. National Gallery of Art, Washington, 1975: 326, repro., as by Simone Martini and Assistants.
- 1977 Torriti, Piero. *La Pinacoteca Nazionale di Siena. I Dipinti dal XII al XV secolo*. Genoa, 1977: 90.
- 1978 Ressayre, Claude, Sylvia Beguin, and Michel Laclotte, eds. *Retables italiens du XIIIe au XVe siècle*. Exh. cat. Musée National du Louvre, Paris, 1978: 19.
- 1979 De Benedictis, Cristina. *La pittura senese 1330-1370*. Florence, 1979: 93.
- 1979 Shapley, Fern Rusk. *Catalogue of the Italian Paintings*. National Gallery of Art. 2 vols. Washington, 1979: 1:432-433; 2:pl. 310.
- 1980 Zeri, Federico, and Elizabeth E. Gardner. *Italian Paintings: Sienese and Central Italian Schools. A Catalogue of the Collection of the Metropolitan Museum of Art*. New York, 1980: 95.
- 1982 Natale, Mauro, Alessandra Mottola Molfino, and Joyce Brusa. *Museo Poldi Pezzoli*. Vol. 1 (of 7), *Dipinti*. Milan, 1982: 145.
- 1985 *European Paintings: An Illustrated Catalogue*. National Gallery of Art,

- Washington, 1985: 374, repro.
- 1987 Previtali, Giovanni. "Problems in the Workshop of Simone Martini." *Center / National Gallery of Art, Center for Advanced Study in the Visual Arts* 7 (1987): 83-84.
- 1988 Boskovits, Miklós, ed. *Frühe italienische Malerei: Gemäldegalerie Berlin, Katalog der Gemälde*. Translated by Erich Schleier. Berlin, 1988: 75.
- 1988 Martindale, Andrew. *Simone Martini*. Oxford, 1988: 35 n. 18.
- 1988 Previtali, Giovanni. "Introduzione ai problemi della bottega di Simone Martini." In *Simone Martini: atti del convegno; Siena, March 27-29, 1985*. Edited by Luciano Bellosi. Florence, 1988: 166 n. 23
- 1990 Boskovits, Miklós. "Review of Simone Martino by Andrew Martindale." *Kunstchronik* 43 (1990): 600.
- 1991 Christie, Manson & Woods. *Important Paintings by Old Masters*. New York, 11 January 1991: 28.
- 1991 De Benedictis, Cristina. "Lippo Memmi." In *Enciclopedia dell'arte medievale*. Edited by Istituto della Enciclopedia italiana. 12 vols. Rome, 1991-2002: 7(1996):735.
- 1995 Baetjer, Katharine. *European Paintings in the Metropolitan Museum of Art by Artists Born before 1865. A Summary Catalogue*. New York, 1995: 42.
- 1998 Frinta, Mojmír S. *Punched Decoration on Late Medieval Panel and Miniature Painting*. Prague, 1998: 400, 444.
- 1998 Kier, Hiltrud, and Frank Günter Zehnder, eds. *Lust und Verlust*. Vol. 2 (of 2), *Corpus-Band zu Kölner Gemäldesammlungen 1800-1860*. Cologne, 1998: 551, repro.
- 1999 Bagnoli, Alessandro. *La Maestà di Simone Martini*. Cinisello Balsamo (Milan), 1999: 156 n. 24, 179.
- 2009 Bellosi, Luciano, ed. *La collezione Salini: dipinti, sculture e oreficerie dei secoli XII, XIII, XIV e XV*. 2 vols. Florence, 2009: 1:135, repro. 138.

**To cite:** Miklós Boskovits (1935–2011), "Simone Martini/*Saint Matthew*/c. 1315/1320," *Italian Thirteenth and Fourteenth Century Paintings*, NGA Online Editions, <http://purl.org/nga/collection/artobject/41633/2016-03-21> (accessed March 21, 2016).