

The Pacific Community

*Sustainable Pacific Development
through Science, Knowledge
and Innovation*



Pacific
Community
Communauté
du Pacifique



DIGITAL EARTH PACIFIC

Globally, the effects of climate change are already being observed through increases in drought, forest fires, sea level rise, flooding and hunger. Given the vulnerability of Pacific Island countries and territories (PICTs) in this respect, the Pacific region faces unique challenges in managing natural resources and biodiversity, securing economies and livelihoods and ensuring sustainable food systems.

Digital Earth Pacific will deliver an operational earth and marine observation system that takes decades of satellite data and makes it easier to access and use, empowering decision-makers across the Pacific. It will provide a fundamental digital infrastructure that will ensure every nation in the Pacific has access to tools, technologies and capacity to routinely monitor and track challenges from climate change, food insecurity or disaster risk through robust decision-ready products that are updated with every satellite overpass.

Digital Earth Pacific will support concise, analyzed information for decision makers, while providing

critical data and information to support national, regional, and global commitments such as the 2050 Strategy for the Blue Pacific Continent, the Paris Agreement, and the Sustainable Development Goals.

Powered by Microsoft's Planetary Computer, Digital Earth Pacific will provide free, open and ready-to-use products and services as public goods and drive growth in the Pacific economy by enabling small businesses and industry to more readily access satellite data to innovate and create new products and entrepreneurship opportunities.

Importantly, the program is being founded on a demand-driven, co-creation process identifying the needs and priorities of the communities served.

Our Principles

- 1 Demand-driven
- 2 User-centric design
- 3 Accountability and transparency
- 4 Partnerships
- 5 Public goods
- 6 Data ecosystem
- 7 Holistic capacity development
- 8 Diversity and inclusion
- 9 Nimble and agile
- 10 Interoperable

The Blue Pacific Continent



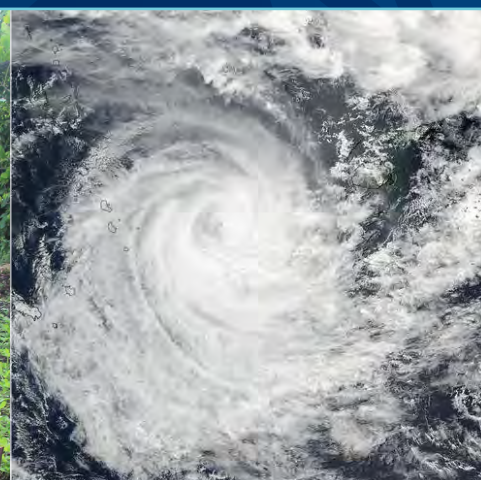
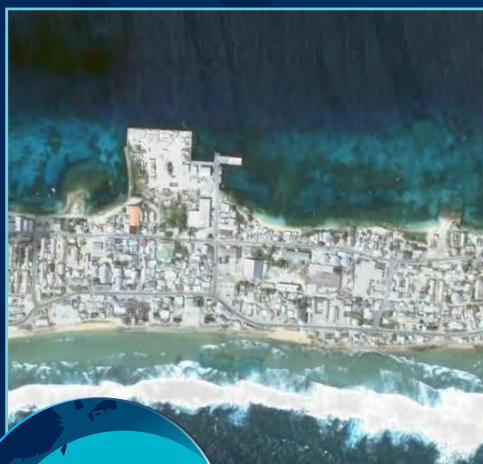
The people of the Pacific Continent are stewards of sea life and coral reefs, treasured cultures and many underserved populations, who are already experiencing the dramatic effects of climate change.

The region's remoteness and vulnerability are unparalleled on the planet - and so is its potential to generate solutions and change, both regionally and worldwide. The Digital Earth Pacific Program will help assure a safe and prosperous future for Pacific Islands communities, and actively contribute to the regeneration and health of the region, and the planet.

Climate change

Food insecurity

Disaster management



The people of the Blue Pacific Continent manage **30% of the world's** most vulnerable natural and economic zones.

Digital Earth Pacific

A Roadmap to 2030 and Beyond

Digital Earth Pacific will become an indispensable capability for the Pacific Region. Housed at the Pacific Community (SPC), ensuring its long-term sustainability will be essential. A 3 phased approach has been developed to:

PHASE I Setting the Foundation

PHASE I (2022-2023):

Setting the strategic foundations, developing the technical infrastructure, co-creating products and services, engaging stakeholders, and operationalizing the program.

PHASE II Increasing Uptake and Capacity development

PHASE II (2024-2026):

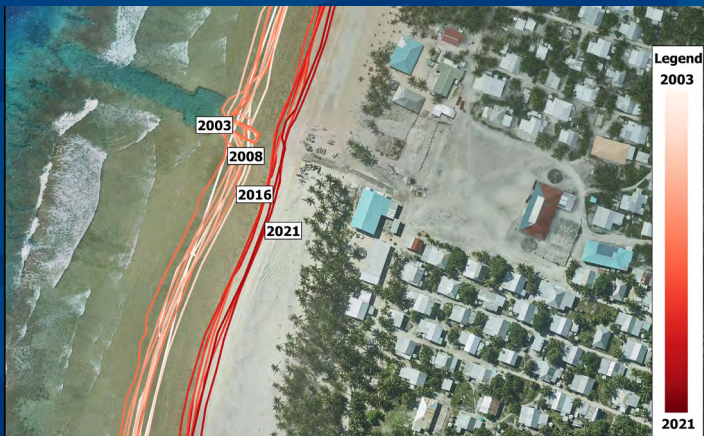
Increase the capabilities of Digital Earth Pacific and create new, innovative and decision-ready products and applications with a focus on engagement and capacity development to ensure uptake, usage and impact.

PHASE III Creating an ecosystem

PHASE III (2027-2029):

Have an ecosystem of data, users, applications and knowledge established where data is flowing to and from organizations and platforms in the region and around the world. Users are not only using data from Digital Earth Pacific, but creating their own products and services powered by Digital Earth Pacific.

End users include:



The Digital Earth Pacific allows the tracking by offering instant access to past and current satellite data. Digital Earth Pacific will empower decision makers in the Pacific and beyond



Fishing communities



Local/national/
international leaders



Farmers



Decision and policy
makers



Resource managers



Innovators and
entrepreneurs

Partnership

SPC is seeking donors and partners to accelerate the Digital Earth Pacific Program. Partners bring communities together, develop capacity across the region, and create long-term, sustainable solutions.

Your participation can:

- Financially resource the program
- Make data more accessible
- Build capacity on the use of earth observations
- Support advocacy and outreach
- Help develop models, applications and tools

Sustainable Development Goals

In alignment with Pacific Geospatial and Surveying Council (PGSC), the Group on Earth Observations (GEO) and the UN Committee of Experts on Global Geospatial Information Management (UN-GGIM), Digital Earth Pacific will provide solutions to support the achievement of these SDGs.



Contact

For more information contact: Karena Lyons | karenal@spc.int

<https://www.spc.int/DigitalEarthPacific>

Founding partners



Prepared for publication at SPC's Headquarters in
Noumea, New Caledonia, 2022

www.spc.int | spc@spc.int