



TEN YEAR PACIFIC STATISTICS STRATEGY Phase II

12th Pacific Steering Committee Meeting

Tanoa Waterfront Hotel, Lautoka, Fiji Islands

1st – 2nd June, 2016



PSSC-12 Agenda 9.4

Regional update: gender statistics

Table of Contents

- I. Introduction/Background
- II. Key Issues/Challenges
- III. Key Recommendations

I. Introduction/Background

Component 1: Strengthening PICT capacity to mainstream gender

- Gender mainstreaming capacity stocktakes
- Gender mainstreaming action plans
- Policy briefs on gender mainstreaming
- Training on gender mainstreaming
- Guidelines on gender mainstreaming
- National gender equality policies reviewed and developed

Component 2: Monitoring progress towards gender equality

- Gender profiles
- Training on gender statistics (link to gender mainstreaming)
- User friendly tools
- Gender analysis of key sectors/surveys/administrative data

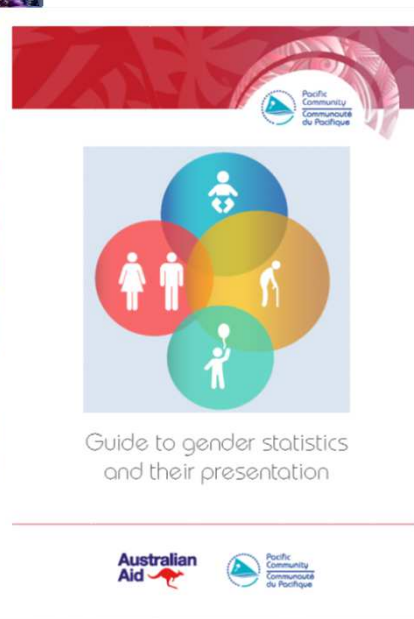


Progressing Gender Equality in the Pacific
(2013–2018)

Programme report: 1 July 2014–30 June 2015



Gender Equality:
Where do we stand?



Beijing + 20:

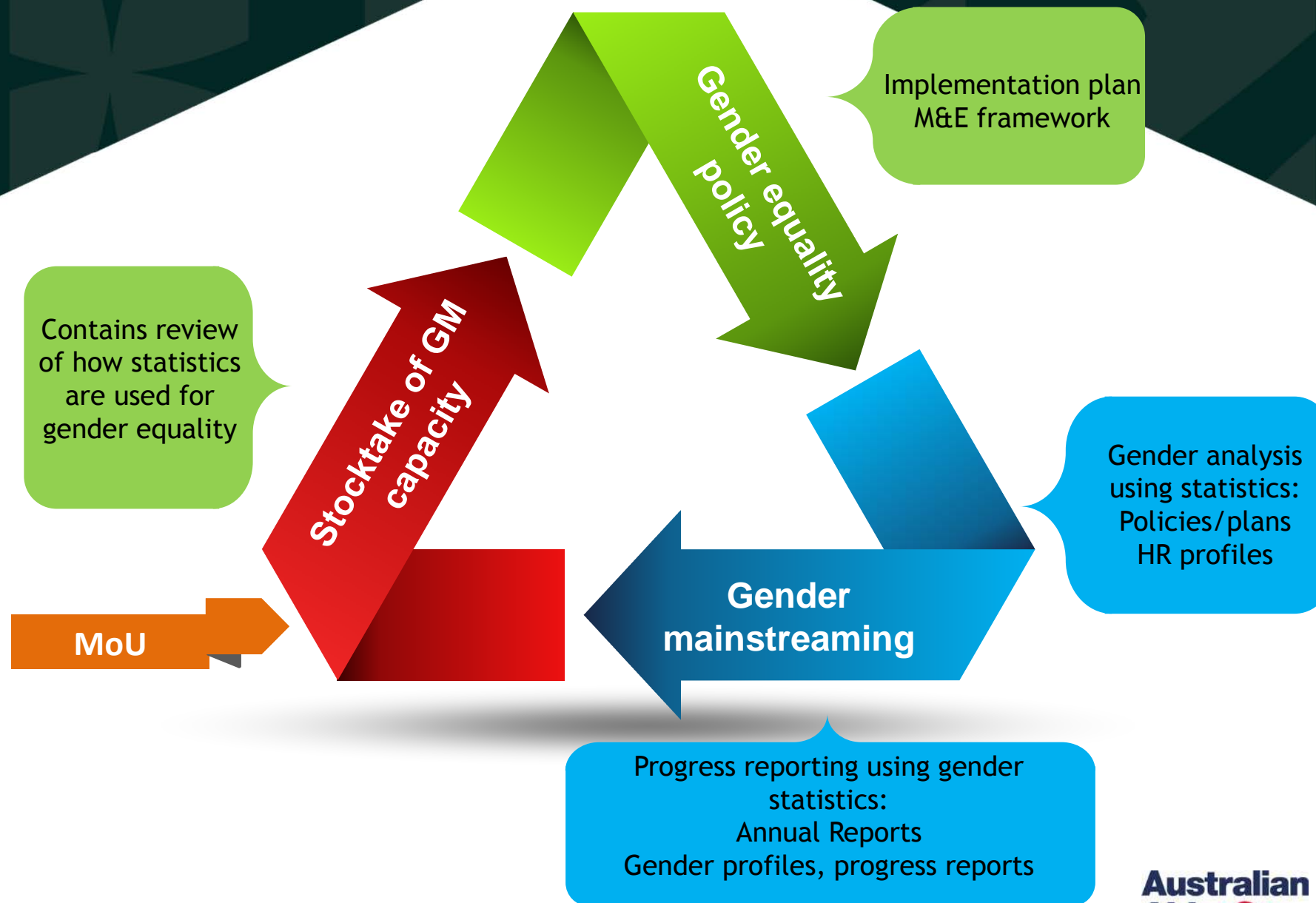
Review of progress in implementing the Beijing Platform for Action in Pacific Island countries and territories

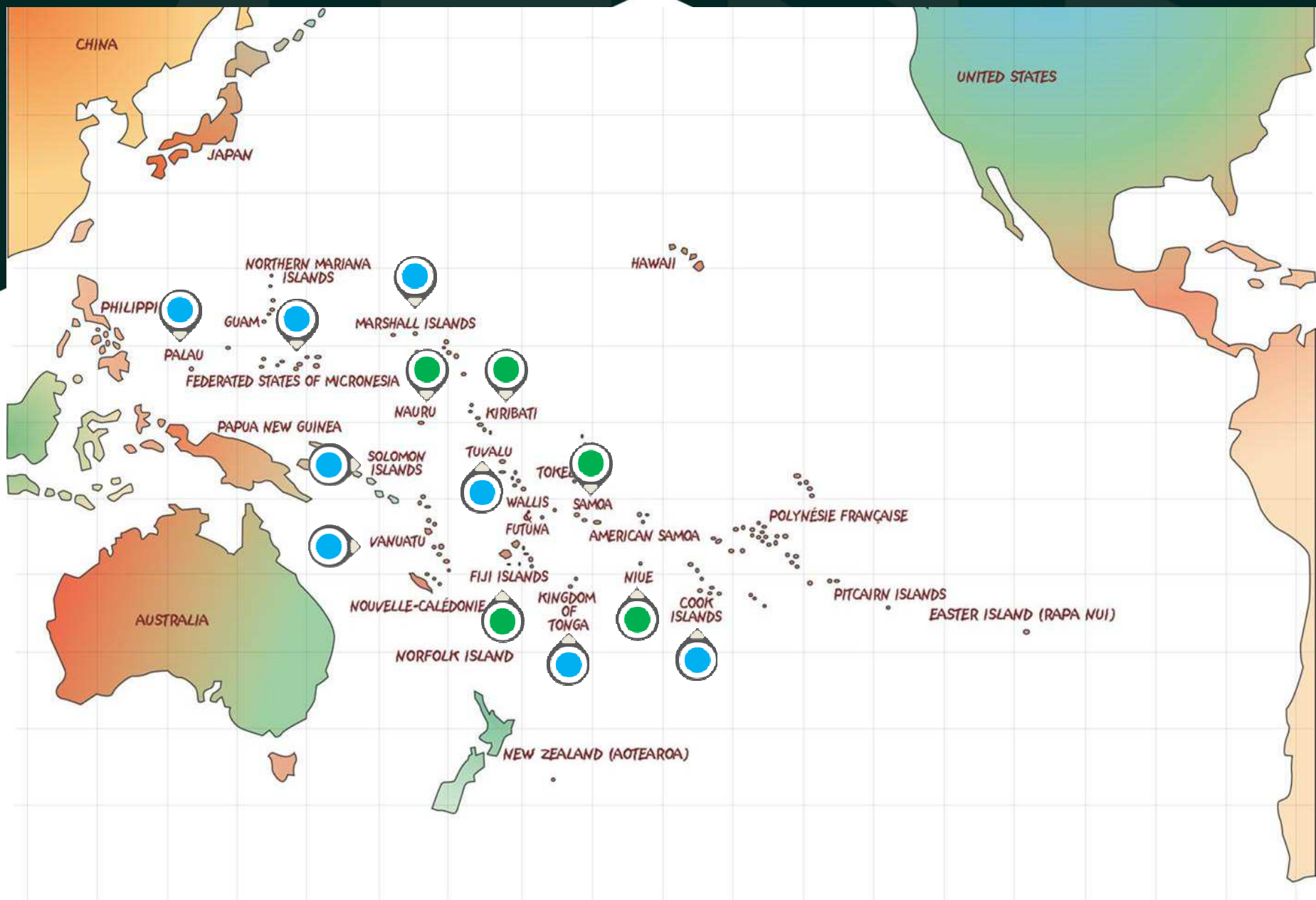


Gender equality:
Where do we stand?
Solomon Islands



I. Introduction/Background







II. Key Issues/Challenges



gender statistics workshop

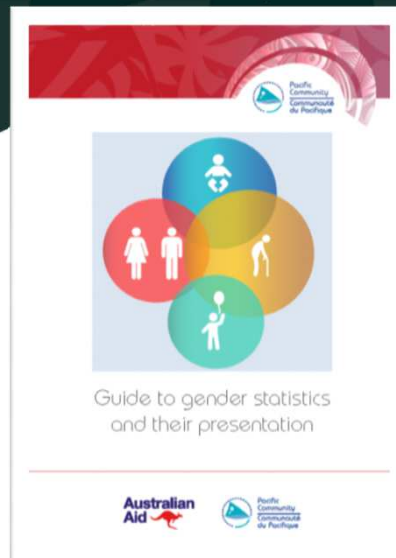


SPC
Secretariat
of the Pacific
Community



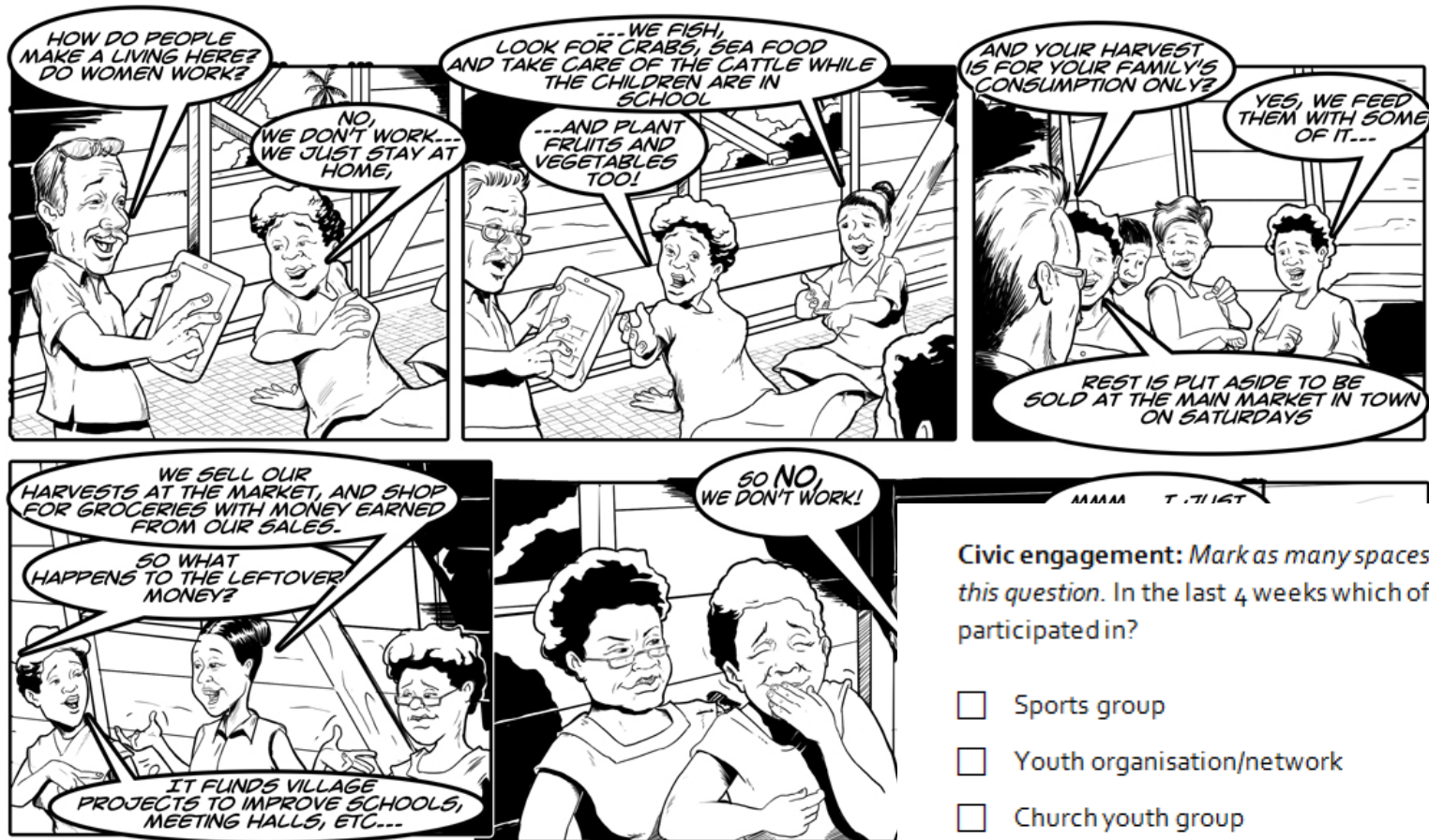
Nadi, 5-8 October





II. Key Issues/Challenges





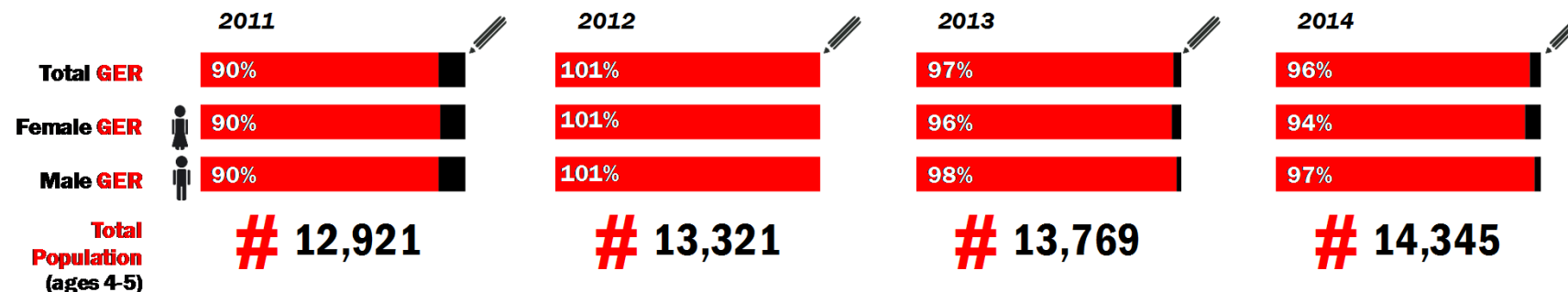
Civic engagement: Mark as many spaces as you need to answer this question. In the last 4 weeks which of these have you participated in?

- ☐ Sports group
- ☐ Youth organisation/network
- ☐ Church youth group
- ☐ Local government consultations/decisions
- ☐ Village/community development planning
- ☐ Volunteered time to an organisation (*eg. participated in an awareness campaign*)
- ☐ Other interest group/organisation, specify:

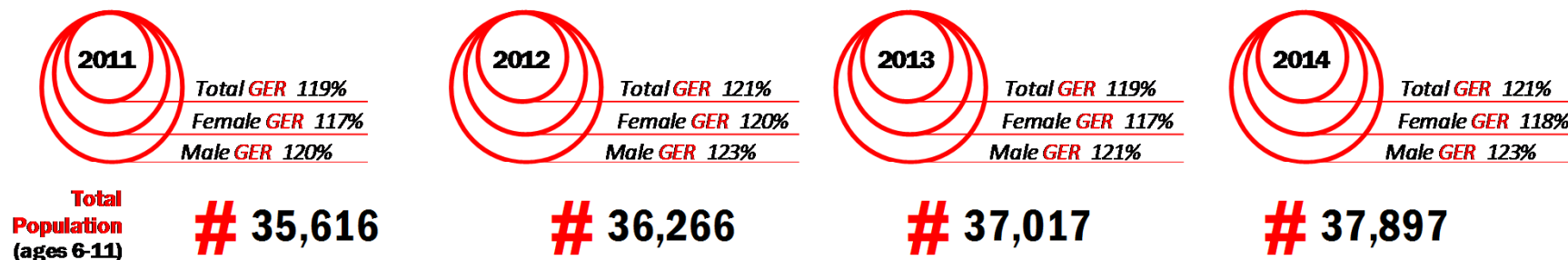
II. Key Issues/Challenges

Gross Enrolment Ratio (GER) in Lalalopsy

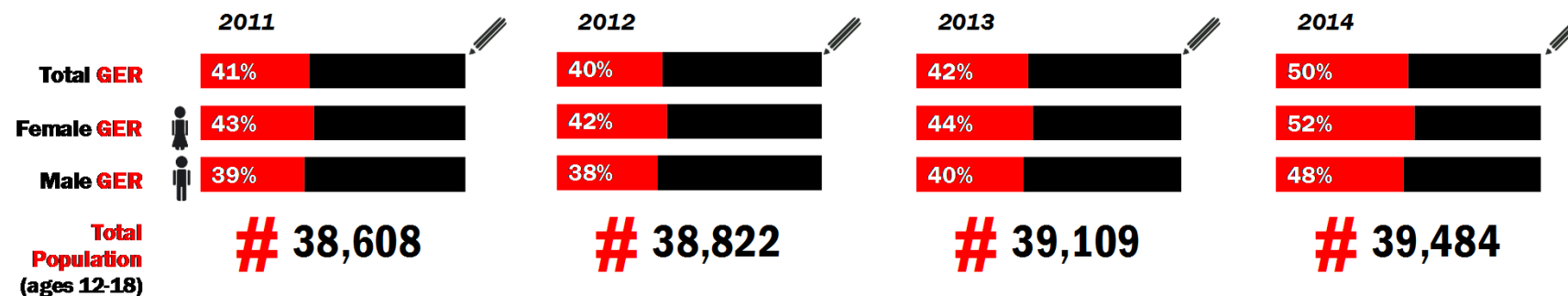
• In Early Childhood Education in Lalalopsy



• In primary education in Lalalopsy

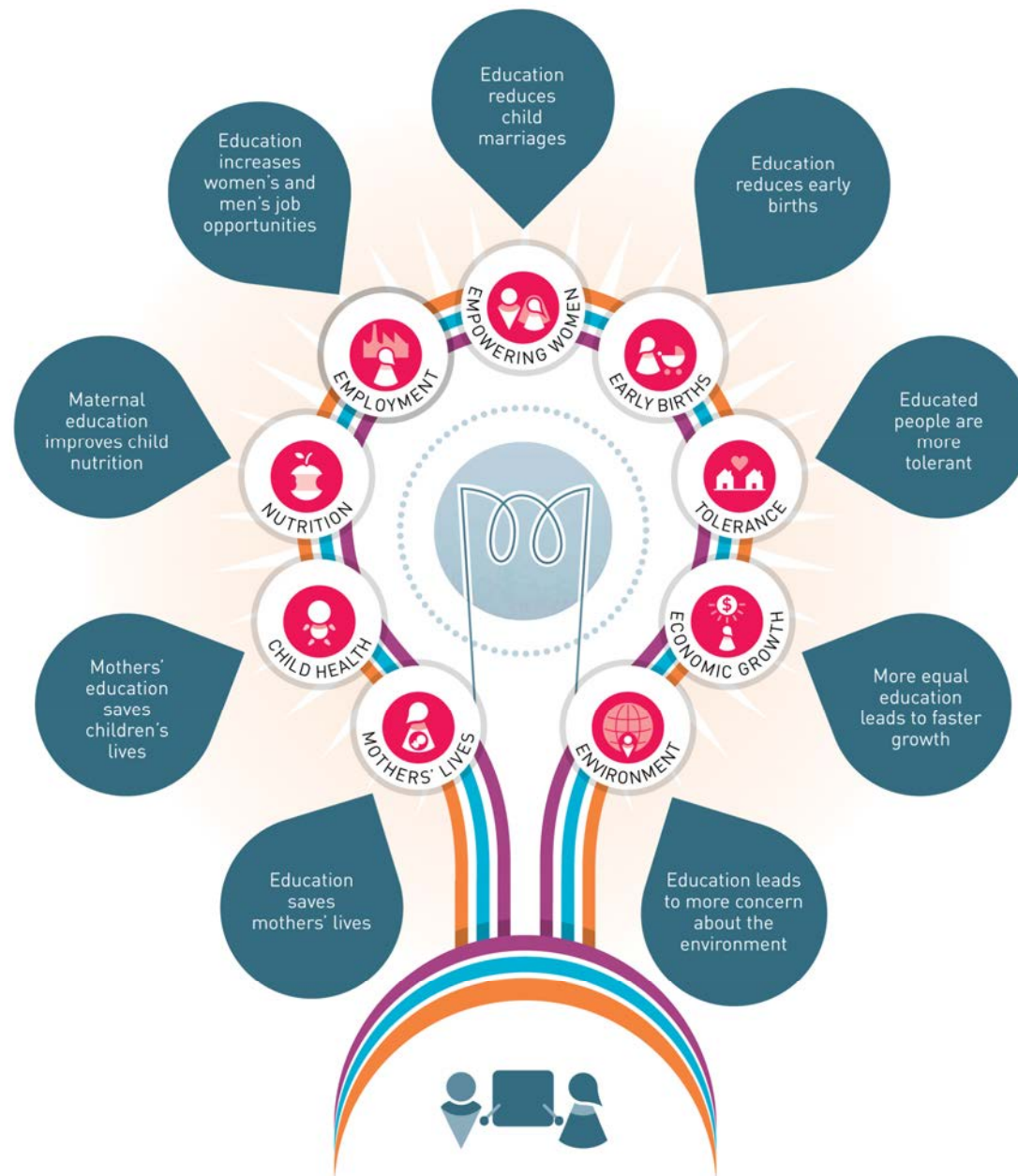


• In secondary education in Lalalopsy

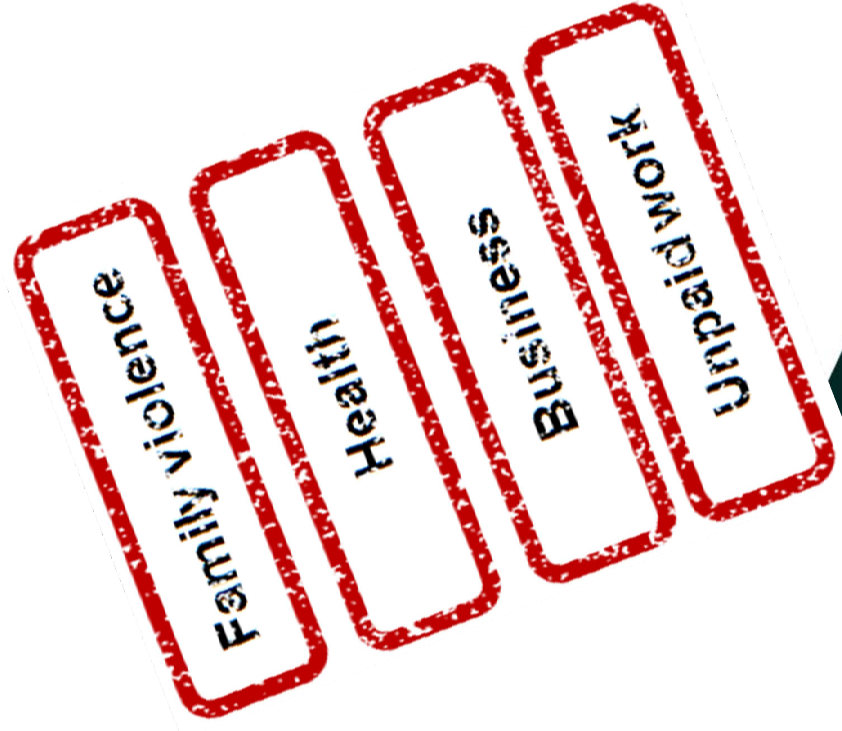


Gross enrolment ratio can be above 100 percent if some enrolled students are older or younger than the age group that officially corresponds to that level of education.

EDUCATION TRANSFORMS LIVES



- ◆ Reduces child marriages
- ◆ Reduces early births
- ◆ Educated people are more tolerant
 - ◆ Leads to more concern about the environment
- ◆ Increases economic growth
 - ◆ Saves mothers lives
 - ◆ Saves children's lives
 - ◆ Improves child nutrition
- ◆ Increases women's and men's job opportunities



III. Key Recommendations

UN Minimum Set of Gender Indicators

Review Census/other survey questionnaires to check coverage
Review Census/other survey outputs to check coverage

PSSC Technical Working Groups

Gender statistics focal points in the Data Utilisation and Administrative Data TWGs

TYPSS II Implementation

Gender statistics central part of data analysis and dissemination

THANK YOU

Email Contact: kimr@spc.int

Further information visit:

**[http://www.spc.int/DigitalLibrary/HDP/Collection/
Gender](http://www.spc.int/DigitalLibrary/HDP/Collection/Gender)**