



Pacific
Community
Communauté
du Pacifique

Taking action on climate

to shape
a resilient
Pacific

The Pacific region in a climate emergency

As the Earth heats up, weather and climate patterns change dramatically around the globe.

According to the Intergovernmental Panel on Climate Change, the Pacific region has been impacted by those changes experiencing rising temperatures, cyclones and droughts that jeopardize livelihoods.

Pacific Island Countries and Territories (PICTs), and more specifically Pacific Small Island Developing States, will experience **sea-level rise** well above the global rate (projections: 0.8m in the next 100 years), **more frequent inundation** by king tides and **increased salination of land and freshwater**, reducing already poor agricultural productivity, among others.

Progress is needed on many fronts to achieve the objectives of the Paris Agreement including:

- greenhouse gas emission reductions;
- adaptation;
- access to finance;
- development and transfer of green technologies;
- better understanding loss and damage impacts and;
- the establishment of effective government policies and engagement from both the public and private sectors.

It is also essential to provide education and training to a wider range of beneficiaries.



Resilience and climate action at the heart of the Pacific Community's strategy

As the premier scientific and technical intergovernmental organisation in the region, the Pacific Community (SPC) is proud to be applying our **collective capabilities in science, knowledge, and innovation to serve the people of the Pacific** in reaching their resilient sustainable development goals and aspirations.

However, addressing climate change takes more than science and information alone. Preventing excessive global warming, reducing biodiversity and habitat loss, and avoiding negative impacts on human rights will take concerted action across all parts of society.

Therefore, **SPC formulated its Strategic Plan 2022-2031 to address climate change holistically**, supporting resilient sustainable development by applying a people-centred approach underpinned by science, information, research and technology across four goals.

By **2100**

the Pacific will experience more frequent category 4-5 storms

(Source: Intergovernmental Panel on Climate Change)

A **10%**

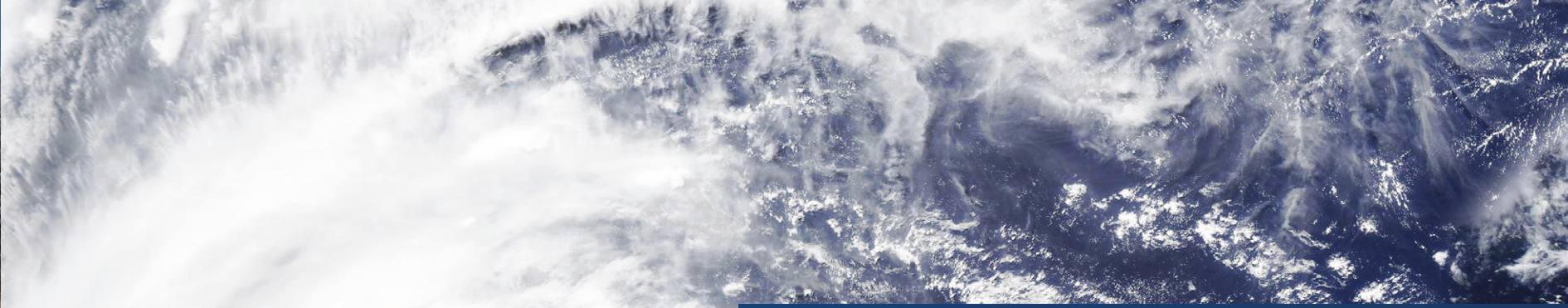
reduction in average rainfall (by 2050) would lead to a 20% reduction in the size of the freshwater lens on Tarawa Atoll, Kiribati.

(Source: Intergovernmental Panel on Climate Change)

+ **616,000**

new displacements recorded in 17 Pacific countries due to a natural disaster linked to climate change between 2008 and 2018.

(Source: Pacific Resilience Partnership)



Four development Goals

- 1 All Pacific people benefit from sustainable development
- 2 All Pacific communities and cultures are empowered and resilient
- 3 All Pacific people reach their full potential and live long and healthy lives
- 4 One SPC delivers integrated programmes through streamlined services

SPC's climate and enabling actions

Seven dimensions to strengthen resilience in climate action

SPC supports the implementation of a variety of programmes and activities through collaboration across its divisions and integrated programmes.

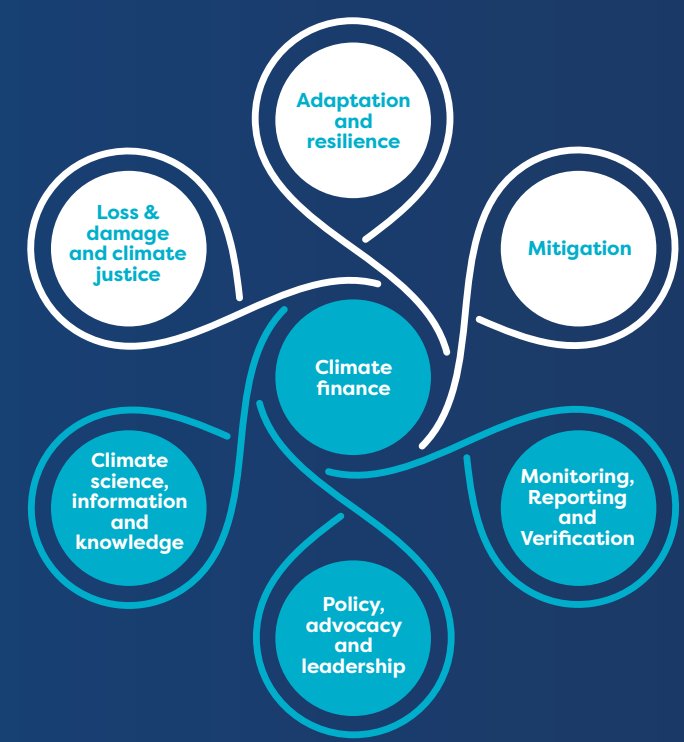
SPC addresses climate change across seven interlinked dimensions to reduce emissions of greenhouse gases and support resilience to climate change in 22 PICTs.

SPC's interventions aim to:

- Enhance climate action by **promoting and facilitating the integration of environment** and climate change into all aspects of development co-operation;
- Strengthen capabilities and enable SPC Member States to **develop national climate change plans** and access financial assistance mechanisms.

SPC's divisions and integrated programmes incorporate elements of mitigation, adaptation and loss and damage subcomponents of **climate change action**.

In addition, they support a range of **enabling activities** to underpin this action including: access to climate finance, science and information, advocacy and negotiation support, and monitoring, reporting and verification. This is particularly important in fields such as agriculture, forestry, fisheries, health, ocean science and energy and cross-cutting themes.



● Climate action
● Enabling action

Discover some initiatives



Understanding the impact sea-level rise may have on maritime boundaries

SPC is committed to developing the evidence base and likely timeframes around the potential impacts of climate change and sea-level rise on maritime zones in the Pacific. **The Resilient Boundaries for the Blue Pacific Project** aims to understand better the impact sea-level rise could have on maritime zones within the region. This work will improve Pacific capacity to make science-based legal and policy decisions to strengthen the resilience of our ocean space for future generations.



Promoting renewable energy as a key climate solution

SPC's **Pacific Centre for Renewable Energy and Energy Efficiency (PCREEE)** is supporting sustainable energy research and innovation. It identifies gaps in the current effort to address existing barriers and strengthen drivers for sustainable energy markets, industries and innovation through regional methodologies and tools.



Supporting Pacific leadership for climate action

SPC is an implementing partner of the **Regional Pacific Nationally Determined Contributions Hub** (NDC Hub). Formed by Pacific Island nations, for Pacific Islands nations, 'the Hub' helps find the data, resources, and expertise that is needed to implement and update their climate targets - the NDCs - required by the Paris Agreement.



Making genetic diversity part of climate change adaptation

SPC's **Centre for Pacific Crops and Trees (CePaCT)** was created to strengthen the resilience of **food and nutrition security** to the impacts of disasters and climate change through technology development and technical advisory support services. It aims to assist PICTs in conserving the region's genetic resources (with priority given to the region's staple crops such as taro, yam, coconut, sweet potato, banana, cassava, breadfruit and bele), and providing access to the diversity they need. To support improved health/nutrition objectives, the Centre facilitates access to a diverse portfolio of exotic vegetable varieties such as tomato, cabbage, capsicum, eggplant and among others.



Supporting local farmers to implement Nature-based Solutions in the Pacific

Through the **PROTEGE project** and the **Kiwa Initiative**, farmers located in European overseas countries and territories (New Caledonia, French Polynesia, Wallis and Futuna), as well as Tonga, Nauru, Solomon Islands and Fiji implement innovative agroecological practices to build resilience to climate change through **Nature-based Solutions**. These two networks, coordinated by SPC, provide innovative tools and knowledge sharing opportunities to upscale organic and agroecological practices in the region.

About SPC

The Pacific Community is the principal scientific and technical organisation in the Pacific region, supporting development since 1947. We are an international development organisation owned and governed by our 27 country and territory members, including all 22 Pacific Island countries and territories. In pursuit of sustainable development to benefit Pacific people, our organisation works across more than 20 sectors, and we are known for our knowledge and innovation in such areas as fisheries science, public health surveillance, geoscience, and conservation of plant genetic resources for food and agriculture.

Contact

Maeva Tesan

Information, Communications and Knowledge Management Officer
Climate Change and Environmental Sustainability (CCES) Programme
Pacific Community (SPC)

✉ maevat@spc.int
📌 www.spc.int



Pacific
Community
Communauté
du Pacifique