



**Ministry of Education, Sports and Culture**

**EDUCATION  
STATISTICAL DIGEST**

**2009**

**SAMOA**

## **Introduction**

The Statistical Digest provides a range of statistics and performance measures related to school education in Samoa.

The information included in the digest is the latest information that is available as of May 2009. Historical data has also been included to reflect changes over time.

The Digest is divided into two parts:

- Part 1 – Data from School Census Information System
- Part 2 – Data from sources other than the School Census Information System

### **Part 1**

#### **Data from School Census Information System**

The Annual School Census data collection held on 4<sup>th</sup> March 2009, is a major source of statistical information. The census data is stored in the Ministry's school census information system called Manumea. The school census information system includes a series of reports, which can be automatically produced. These reports are contained in Part 1 of the Statistical Digest.

### **Part 2**

#### **Data from sources other than the School Census Information System**

The Ministry of Education, Sports and Culture's performance measure framework includes a range of indicators that are not automatically produced from the School Census Information System. Data has been assembled from a range of sources such as examination results and personnel information. This information is contained in Part 2 of the Statistical Digest.

Statistical Digest produced by:  
Policy, Planning and Research Division  
Ministry of Education Sports & Culture  
Samoa  
**Phone:** 21911  
**Fax:** 21917  
**Email:** [samoamesc@lesamoa.net](mailto:samoamesc@lesamoa.net)

July 2009

## **Table of Contents for Part 1 – Data from School Census Information System**

Number of schools by school type and district, 2009.....	1
Size of government schools by district, 2009.....	2
School enrolments by level, gender and status, 2009.....	3
School enrolments for all schools, 2000 – 2009.....	4
School enrolment for government schools, 2000 – 2009.....	4
Percentage enrolments in government schools, 2000 – 2009.....	5
Male school enrolments, all schools, 2000 – 2009.....	6
Percentage male enrolments, all schools, 2000 – 2009.....	6
School enrolments by district and maximum level provided, 2009.....	7
Number of repeaters by level in 2009.....	8
Repeaters in all schools by level, 2000 – 2009.....	8
Percentage of repeaters in all schools by level, 2000 – 2009.....	9
Transition rates by year level, 2000 – 2009.....	10
Drop out rates (percentage) by year level, 1995 – 2009.....	11
Number of teachers by school type and district, 2009.....	12
Student-Teacher ratio by school type and district, 2009.....	13
Student-Teacher ratio by level, government schools, 2000 - 2009.....	14
Number of student absent on Census day (4 <sup>th</sup> March 2009).....	15
Number of government secondary schools teaching curriculum subjects by level.....	16
Primary school facilities by Controlling Authority, 2009.....	17
Secondary school facilities by Controlling Authority, 2009.....	17

## **Table of Contents for Part 2 – Data from sources other than School Census Information System**

Average raw score at National Year 8 Examinations.....	1
Number of students sitting Year 8 Examinations.....	1
Percentage of Year 8 students that sat the Year 8 Examinations.....	1
Average raw score at National Year 12 Examinations.....	2
Number of students sitting National Year 12 Examinations.....	2
Primary students identified as at Risk, Year 4, All Schools (Government and Non-Government).....	3
Primary students identified as at Risk, Year 6, Government Schools.....	4
National Age Participation Rates.....	5
No. of Government schools that are meeting the national standards for primary student-teacher ratio of 1 teacher to 30 students (1:30).....	6
No. of Government schools that are meeting the national standards for secondary student-teacher ratio of 1 teacher to 20 students (1:20).....	6
Apparent Retention Rate for all schools.....	7
Students commencing first year of tertiary studies.....	7
Transition Rate from Year 13 to identified tertiary education.....	7

## Definitions

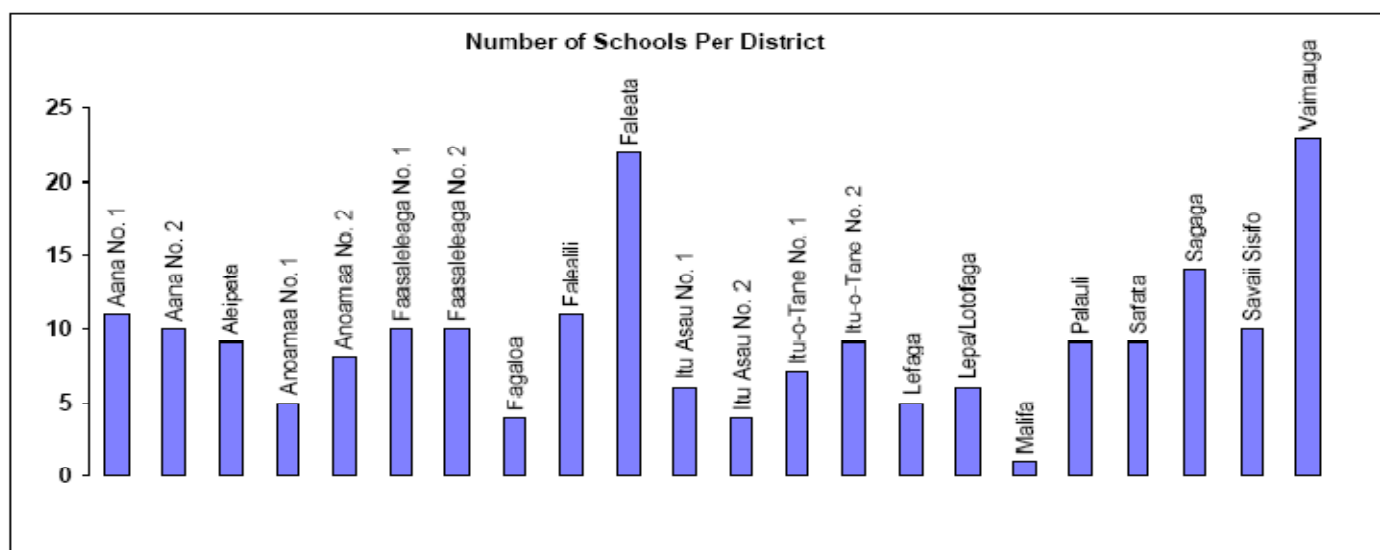
<i>Apparent Retention Rate</i>	compares the number of students in a given year with the size of the cohort. For example, the apparent retention rate of Years 9-12 for 2009 is calculated as the number of students in year 12 in 2009 divided by the number of students in year 9 in 2006.
<i>Completion Rates</i>	the percentage of students sitting the national exams is a measure of completion rates, e.g. percentage of students sitting year 8 exam is a measure of how many students starting year 8 actually complete year 8.
<i>Drop-out Rate</i>	The percentage of students who neither progressed from one level to the next or repeat the level.
<i>Pri-Sec (Primary-Secondary)</i>	A school that provides both primary and secondary levels, e.g. Paul V1 College has Year 7 & 8 levels. It should be noted that Robert Louis Stevenson School is counted as two schools because of their physical locations.
<i>SPELL Test</i>	A test taken by all year 4 and year 6 students in Government schools. Most Non-Government schools also participate, but it is not compulsory. It provides an indication of the students whose learning outcomes are identified as being at risk so that they receive attention from teachers in their reading and numeracy programmes.
<i>Student Teacher Ratio</i>	is calculated as the number of students at a school divided by the total number of teachers (including Principals) at the school. Data is from Annual School Census.
<i>Transitional Rate</i>	is the percentage of students who complete one level and move on to the immediate level. For example, the transitional rate into Post-Secondary studies is the number of students who commenced post-secondary education in 2009 (Institute of Higher Education, Institute of Technology) as a percentage of the students who were in Year 13 in 2008.

*Part 1 – Data from School Census*

*Produced using Manumea, the School  
Census Information System*

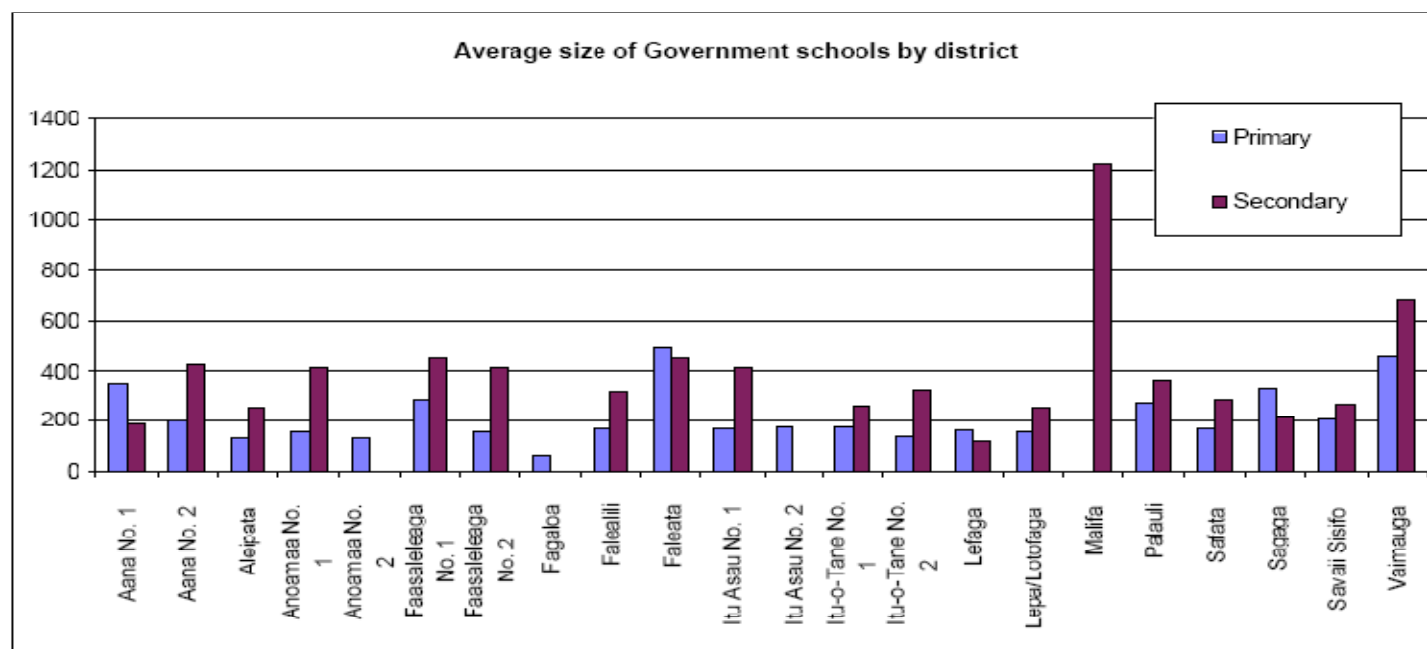
Number of schools by school type and district, 2009

Region/District	Government				Mission				Private				Grand Total
	Primary	Pri-Sec	Secondary	Total	Primary	Pri-Sec	Secondary	Total	Primary	Pri-Sec	Secondary	Total	
<b>Apia Urban</b>													
Faleata	9		1	10	1	1	3	5	5	1	1	7	22
Malifa			1	1									1
Vaimauga	11		3	14	3	1	3	7	2			2	23
<b>Apia Urban Total</b>	<b>20</b>		<b>5</b>	<b>25</b>	<b>4</b>	<b>2</b>	<b>6</b>	<b>12</b>	<b>7</b>	<b>1</b>	<b>1</b>	<b>9</b>	<b>46</b>
<b>Rest of Upolu</b>													
Aana No. 1	7		1	8	1	1	1	3					11
Aana No. 2	9		1	10									10
Aleipata	8		1	9									9
Ancamaa No. 1	4		1	5									5
Ancamaa No. 2	6			6	2			2					8
Fagaloa	4			4									4
Falealili	9		2	11									11
Lefaga	4		1	5									5
Lepa/Lotofaga	5		1	6									6
Safata	8		1	9									9
Sagaga	8		1	9	3		2	5					14
<b>Rest of Upolu Total</b>	<b>72</b>		<b>10</b>	<b>82</b>	<b>6</b>	<b>1</b>	<b>3</b>	<b>10</b>					<b>92</b>
<b>Savaii</b>													
Faasaleleaga No. 1	6		1	7	2		1	3					10
Faasaleleaga No. 2	6		1	7	2	1		3					10
Itu Asau No. 1	5		1	6									6
Itu Asau No. 2	4			4									4
Itu-o-Tane No. 1	5		2	7									7
Itu-o-Tane No. 2	7		1	8	1			1					9
Palauli	7		1	8			1	1					9
Savaii Sisifo	8		2	10									10
<b>Savaii Total</b>	<b>48</b>		<b>9</b>	<b>57</b>	<b>5</b>	<b>1</b>	<b>2</b>	<b>8</b>					<b>65</b>
<b>Grand Total</b>	<b>140</b>		<b>24</b>	<b>164</b>	<b>15</b>	<b>4</b>	<b>11</b>	<b>30</b>	<b>7</b>	<b>1</b>	<b>1</b>	<b>9</b>	<b>203</b>



# Size of Government schools by district, 2009

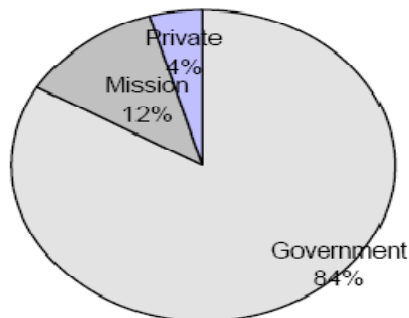
Region/District	Primary Schools				Secondary Schools			
	Number	Average Size	Minimum Size	Maximum Size	Number	Average Size	Minimum Size	Maximum Size
<b>Apia Urban</b>								
Faleata	9	496	254	803	1	456	456	456
Malifa					1	1217	1217	1217
Vaimauga	11	461	217	1321	3	680	560	901
Apia Urban Total	20	476	217	1321	5	742	456	1217
<b>Rest of Upolu</b>								
Aana No. 1	7	341	168	580	1	186	186	186
Aana No. 2	9	193	100	329	1	435	435	435
Aleipata	0	135	63	105	1	252	252	252
Anoamaa No. 1	4	152	130	187	1	415	415	415
Anoamaa No. 2	6	134	43	236				
Fagaloa	4	63	49	71				
Falealii	9	169	88	407	2	313	244	382
Lefaga	1	157	70	288	1	118	118	118
Lepa/Lotofaga	5	155	104	216	1	252	252	252
Safata	8	165	70	267	1	287	287	287
Sagaga	8	329	216	423	1	215	215	215
Rest of Upolu Total	72	191	43	580	10	279	118	435
<b>Savaii</b>								
Faasaleleaga No. 1	6	283	162	493	1	451	451	451
Faasaleleaga No. 2	6	151	73	241	1	418	418	418
Itu Asau No. 1	5	164	104	240	1	420	420	420
Itu Asau No. 2	4	172	110	243				
Itu-o-Tane No. 1	5	177	139	229	2	255	174	336
Itu-o-Tane No. 2	7	141	51	210	1	323	323	323
Palauli	7	269	138	524	1	360	360	360
Savaii Sisifo	8	208	147	302	2	262	256	268
Savaii Total	48	199	51	524	9	334	174	451
Grand Total	140	234	43	1321	24	396	118	1217



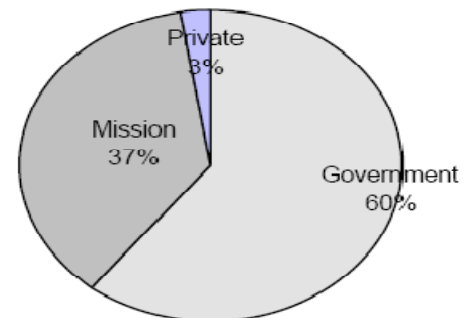
# School enrolments by level, gender and status, 2009

Level	Government			Mission			Private			All Schools		
	Males	Females	Total	Males	Females	Total	Males	Females	Total	Males	Females	Total
1	2,307	2,018	4,325	317	358	675	133	130	263	2,757	2,506	5,263
2	2,139	1,870	4,009	297	293	590	130	101	231	2,566	2,264	4,830
3	2,214	1,932	4,146	290	315	605	136	96	232	2,640	2,343	4,983
4	2,098	2,004	4,102	293	295	588	117	118	235	2,508	2,417	4,925
5	2,116	1,920	4,036	301	317	618	119	126	245	2,536	2,363	4,899
6	2,181	1,827	4,008	278	266	544	103	108	211	2,562	2,201	4,763
7	2,130	1,976	4,106	296	354	650	79	61	140	2,505	2,391	4,896
8	2,111	1,941	4,052	308	311	619	65	84	149	2,484	2,336	4,820
Primary Total	17,296	15,488	32,784	2,380	2,509	4,889	882	824	1,706	20,558	18,821	39,379
9	1,412	1,363	2,775	679	714	1,393	53	63	116	2,144	2,140	4,284
10	1,120	1,172	2,292	603	722	1,325	56	63	119	1,779	1,957	3,736
11	1,017	1,035	2,052	452	604	1,056	0	0	0	1,469	1,639	3,108
12	663	930	1,593	598	646	1,244	44	45	89	1,305	1,621	2,926
13	352	450	802	342	438	780	45	42	87	739	930	1,669
Secondary Total	4,564	4,950	9,514	2,674	3,124	5,798	198	213	411	7,436	8,287	15,723
Grand Total	21,860	20,438	42,298	5,054	5,633	10,687	1,080	1,037	2,117	27,994	27,108	55,102

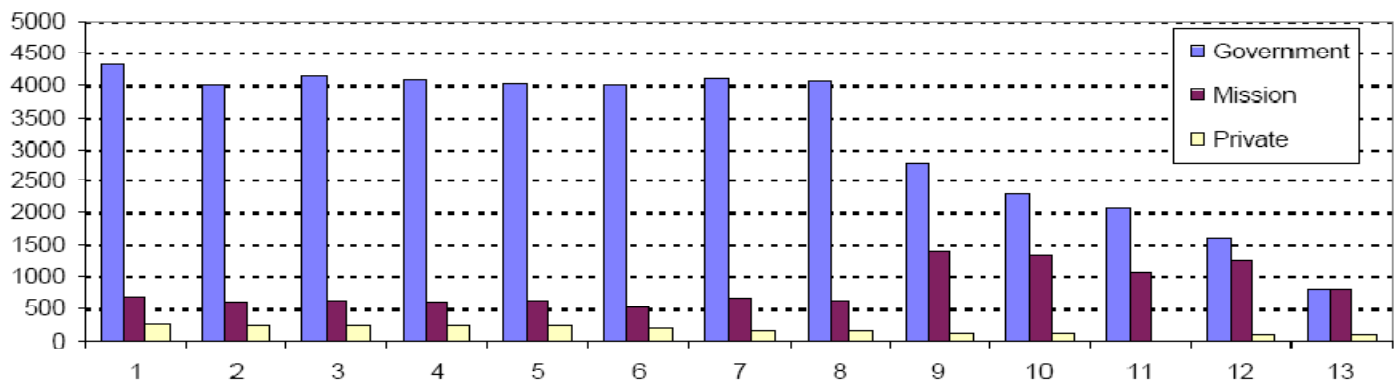
Total primary enrolments by provider



Total secondary enrolments by provider



Enrolments by level and sector



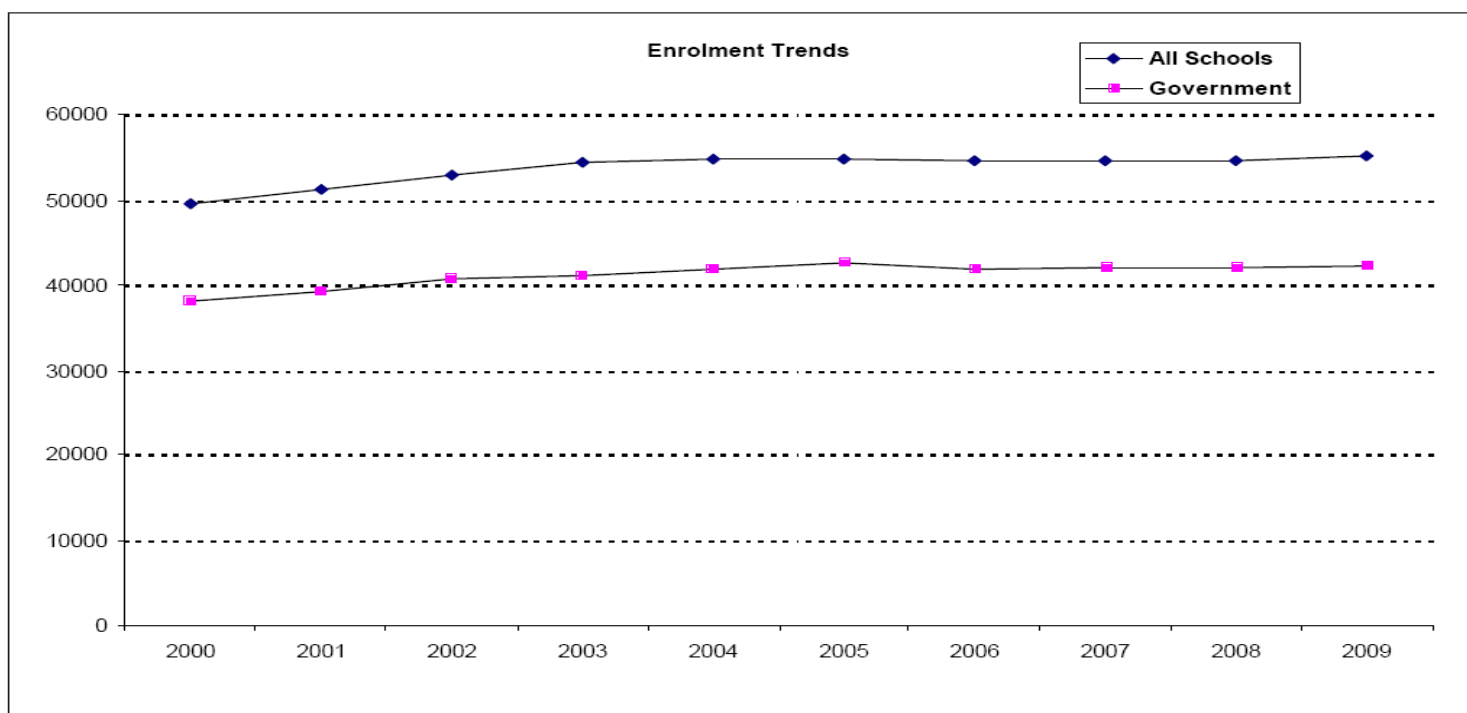


# **School enrolments for all schools**

Year	Primary									Secondary						TOTAL	% Increase
	1	2	3	4	5	6	7	8	Total	9	10	11	12	13	Total		
2000	5,361	4,856	4,835	4,505	4,120	4,250	4,020	4,199	36,146	3,603	3,119	2,847	2,532	1,278	13,379	49,525	
2001	5,768	4,990	4,818	4,862	4,464	4,202	4,169	4,297	37,570	3,629	3,257	2,805	2,565	1,395	13,651	51,221	3
2002	5,962	5,148	5,090	4,964	4,744	4,505	4,155	4,228	38,796	3,719	3,306	2,859	2,820	1,420	14,124	52,920	3
2003	5,877	5,403	5,101	5,094	4,756	4,741	4,377	4,181	39,530	3,729	3,563	3,038	2,881	1,616	14,827	54,357	3
2004	5,685	5,242	5,364	5,115	5,036	4,641	4,615	4,367	40,065	3,673	3,357	3,152	2,822	1,752	14,756	54,821	1
2005	5,455	5,115	5,135	5,229	5,023	4,913	4,581	4,510	39,961	3,876	3,355	2,973	3,101	1,584	14,889	54,850	0
2006	5,389	4,852	4,878	5,079	5,121	4,816	4,801	4,451	39,387	4,020	3,531	2,892	2,916	1,756	15,115	54,502	-1
2007	5,257	4,910	4,840	4,902	5,046	5,012	4,771	4,594	39,332	4,028	3,649	2,964	2,909	1,652	15,202	54,534	0
2008	5,234	4,905	4,884	4,948	4,772	4,956	4,889	4,693	39,281	4,100	3,684	3,019	2,863	1,657	15,323	54,604	0
2009	5,263	4,830	4,983	4,925	4,899	4,763	4,896	4,820	39,379	4,284	3,736	3,108	2,926	1,669	15,723	55,102	1

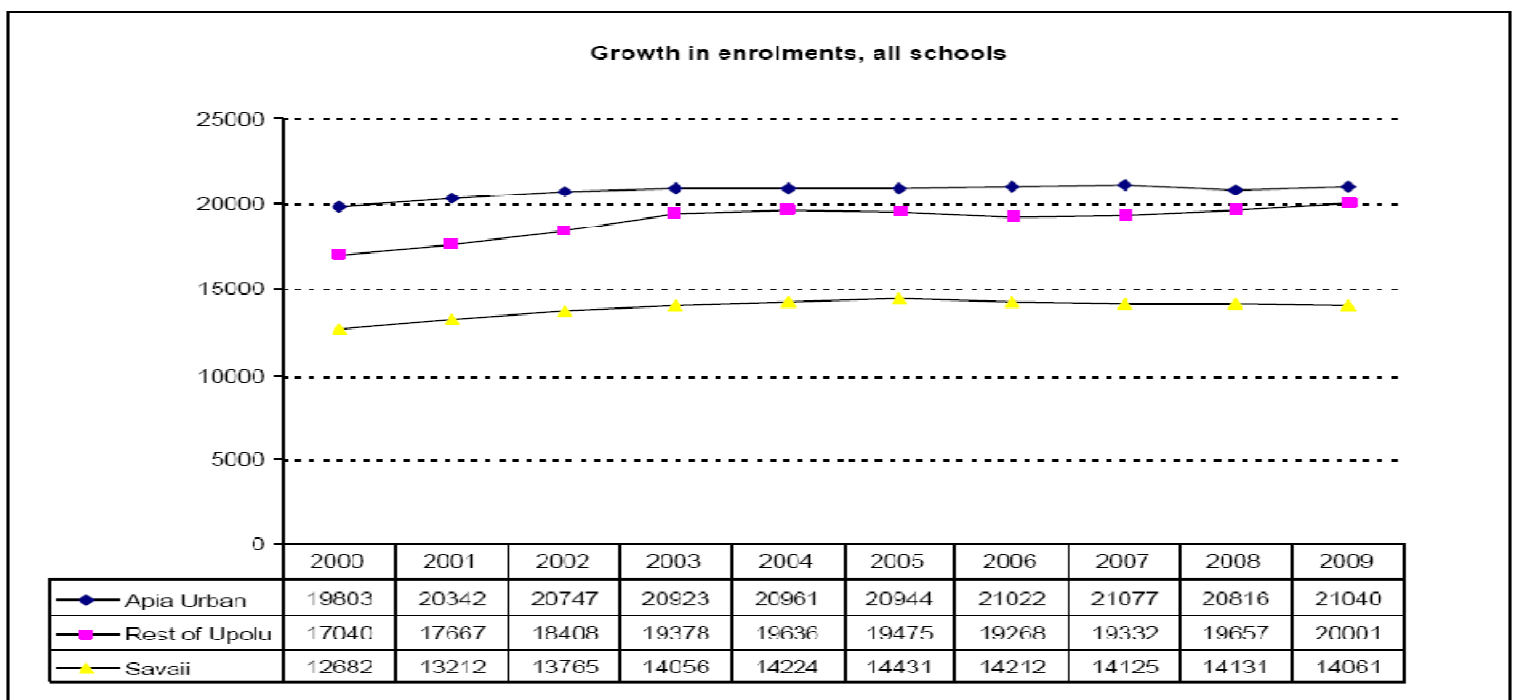
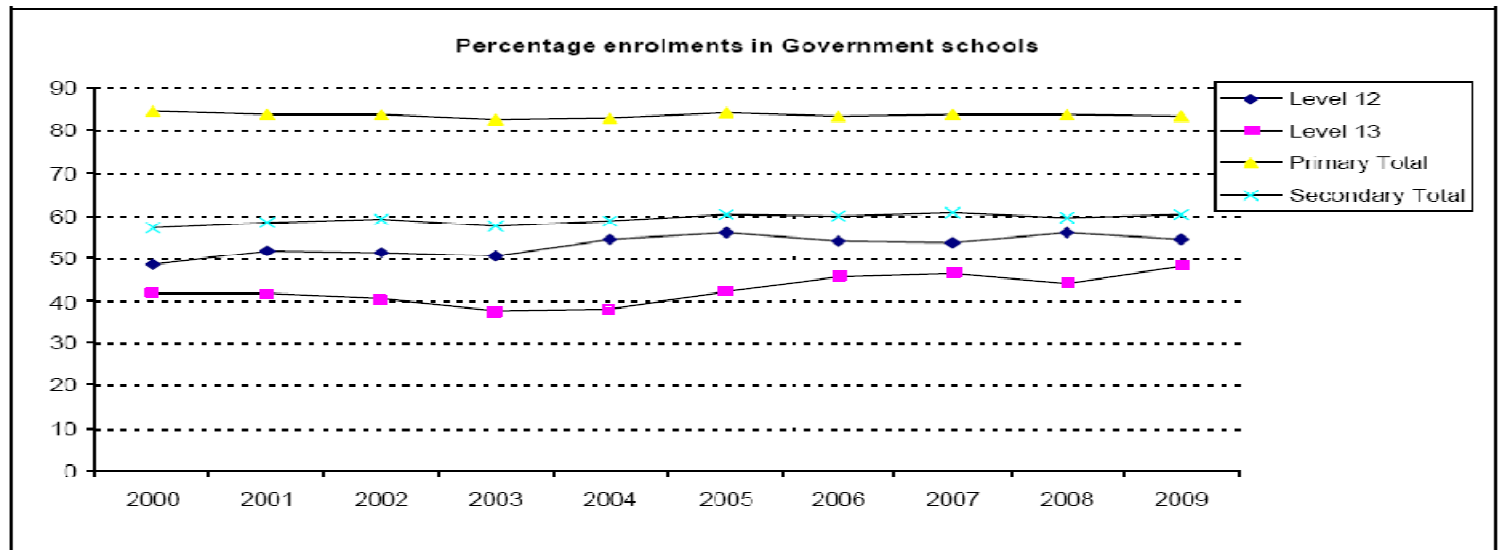
# **School enrolments for Government schools**

Year	Primary									Secondary						TOTAL	% Increase
	1	2	3	4	5	6	7	8	Total	9	10	11	12	13	Total		
2000	4,465	4,042	4,104	3,783	3,490	3,575	3,450	3,607	30,516	2,264	1,839	1,784	1,231	536	7,654	38,170	
2001	4,798	4,117	3,988	4,103	3,722	3,517	3,507	3,631	31,383	2,263	2,021	1,754	1,331	580	7,949	39,332	3
2002	5,004	4,306	4,220	4,145	3,996	3,765	3,486	3,559	32,481	2,386	2,102	1,851	1,449	571	8,359	40,840	4
2003	4,883	4,419	4,184	4,153	3,892	3,952	3,642	3,470	32,595	2,359	2,215	1,900	1,458	606	8,538	41,133	1
2004	4,699	4,369	4,442	4,239	4,179	3,864	3,797	3,609	33,198	2,334	2,141	2,022	1,533	663	8,693	41,891	2
2005	4,545	4,268	4,338	4,418	4,274	4,152	3,839	3,772	33,606	2,519	2,152	1,930	1,738	671	9,010	42,616	2
2006	4,463	3,959	4,064	4,285	4,313	4,086	3,975	3,692	32,837	2,487	2,235	1,962	1,577	806	9,067	41,904	-2
2007	4,356	4,065	4,011	4,115	4,279	4,279	3,976	3,804	32,885	2,533	2,304	2,064	1,556	771	9,228	42,113	0
2008	4,359	4,063	4,060	4,099	3,979	4,204	4,112	3,944	32,820	2,534	2,273	2,000	1,607	731	9,145	41,965	0
2009	4,325	4,009	4,146	4,102	4,036	4,008	4,106	4,052	32,784	2,775	2,292	2,052	1,593	802	9,514	42,298	1



# Percentage enrolments in Government schools

Year	Primary									Secondary						TOTAL
	1	2	3	4	5	6	7	8	Total	9	10	11	12	13	Total	
2000	83.3	83.2	84.9	84.0	84.7	84.1	85.8	85.9	84.4	62.8	59.0	62.7	48.6	41.9	57.2	77.1
2001	83.2	82.5	82.8	84.4	83.4	83.7	84.1	84.5	83.5	62.4	62.1	62.5	51.9	41.6	58.2	76.8
2002	83.9	83.6	82.9	83.5	84.2	83.6	83.9	84.2	83.7	64.2	63.6	64.7	51.4	40.2	59.2	77.2
2003	83.1	81.8	82.0	81.5	81.8	83.4	83.2	83.0	82.5	63.3	62.2	62.5	50.6	37.5	57.6	75.7
2004	82.7	83.3	82.8	82.9	83.0	83.3	82.3	82.6	82.9	63.5	63.8	64.1	54.3	37.8	58.9	76.4
2005	83.3	83.4	84.5	84.5	85.1	84.5	83.8	83.6	84.1	65.0	64.1	64.9	56.0	42.4	60.5	77.7
2006	82.8	81.6	83.3	84.4	84.2	84.8	82.8	82.9	83.4	61.9	63.3	67.8	54.1	45.9	60.0	76.9
2007	82.9	82.8	82.9	83.9	84.8	85.4	83.3	82.8	83.6	62.9	63.1	69.6	53.5	46.7	60.7	77.2
2008	83.3	82.8	83.1	82.8	83.4	84.8	84.1	84.0	83.6	61.8	61.7	66.2	56.1	44.1	59.7	76.9
2009	82.2	83.0	83.2	83.3	82.4	84.1	83.9	84.1	83.3	64.8	61.3	66.0	54.4	48.1	60.5	76.8

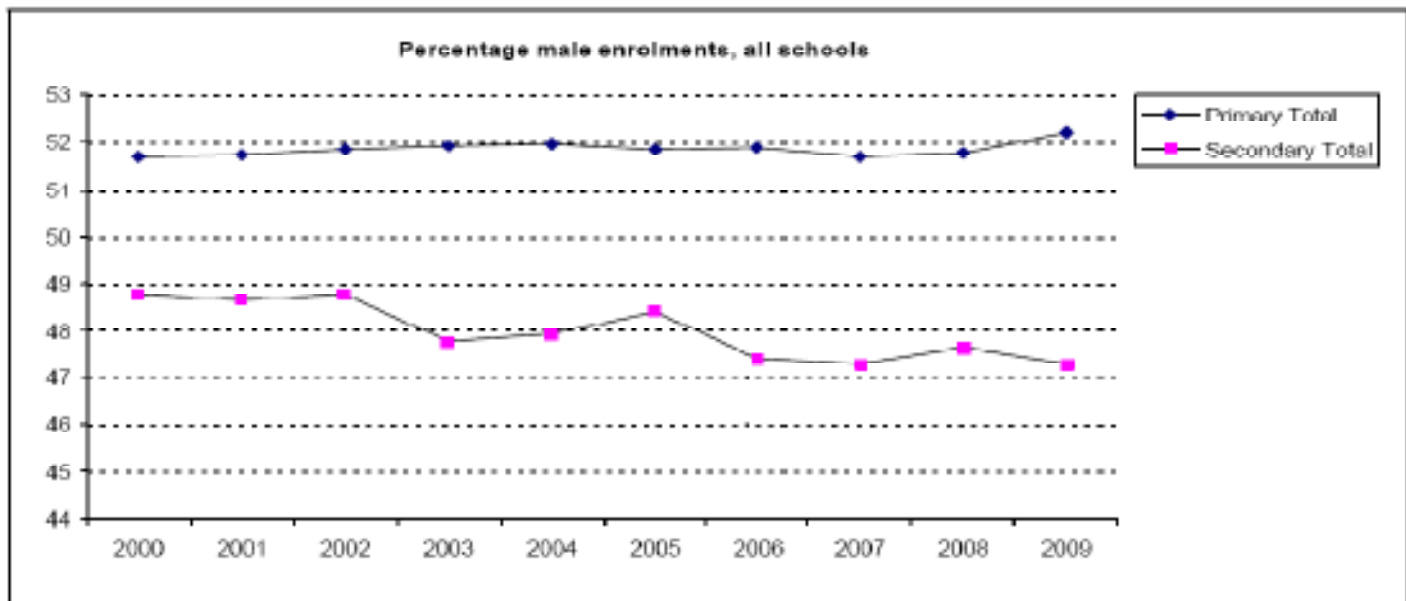


### Male school enrolments, all schools

Year	Primary									Secondary						TOTAL	% Increase
	1	2	3	4	5	6	7	8	Total	9	10	11	12	13	Total		
2000	2,828	2,501	2,567	2,288	2,127	2,180	2,082	2,122	18,893	1,800	1,525	1,458	1,181	582	6,528	25,219	
2001	2,942	2,616	2,518	2,587	2,291	2,165	2,112	2,212	19,443	1,795	1,579	1,420	1,194	655	6,643	26,086	3
2002	3,088	2,618	2,675	2,572	2,526	2,332	2,140	2,169	20,120	1,890	1,620	1,439	1,323	618	6,890	27,010	4
2003	3,101	2,820	2,591	2,673	2,430	2,529	2,250	2,139	20,533	1,837	1,728	1,469	1,338	705	7,077	27,610	2
2004	2,968	2,765	2,818	2,615	2,633	2,366	2,434	2,228	20,827	1,840	1,598	1,548	1,319	766	7,071	27,898	1
2005	2,876	2,690	2,697	2,723	2,543	2,555	2,318	2,319	20,721	1,989	1,660	1,401	1,435	727	7,212	27,933	0
2006	2,812	2,526	2,588	2,677	2,685	2,425	2,455	2,278	20,446	2,002	1,731	1,341	1,349	739	7,162	27,608	-1
2007	2,768	2,504	2,501	2,604	2,603	2,609	2,411	2,332	20,332	1,987	1,792	1,367	1,364	676	7,186	27,518	0
2008	2,745	2,549	2,507	2,565	2,499	2,586	2,518	2,366	20,335	2,024	1,797	1,373	1,387	719	7,300	27,635	0
2009	2,757	2,566	2,640	2,508	2,536	2,562	2,505	2,484	20,558	2,144	1,779	1,469	1,305	739	7,436	27,994	1

### Percentage male enrolments, all schools

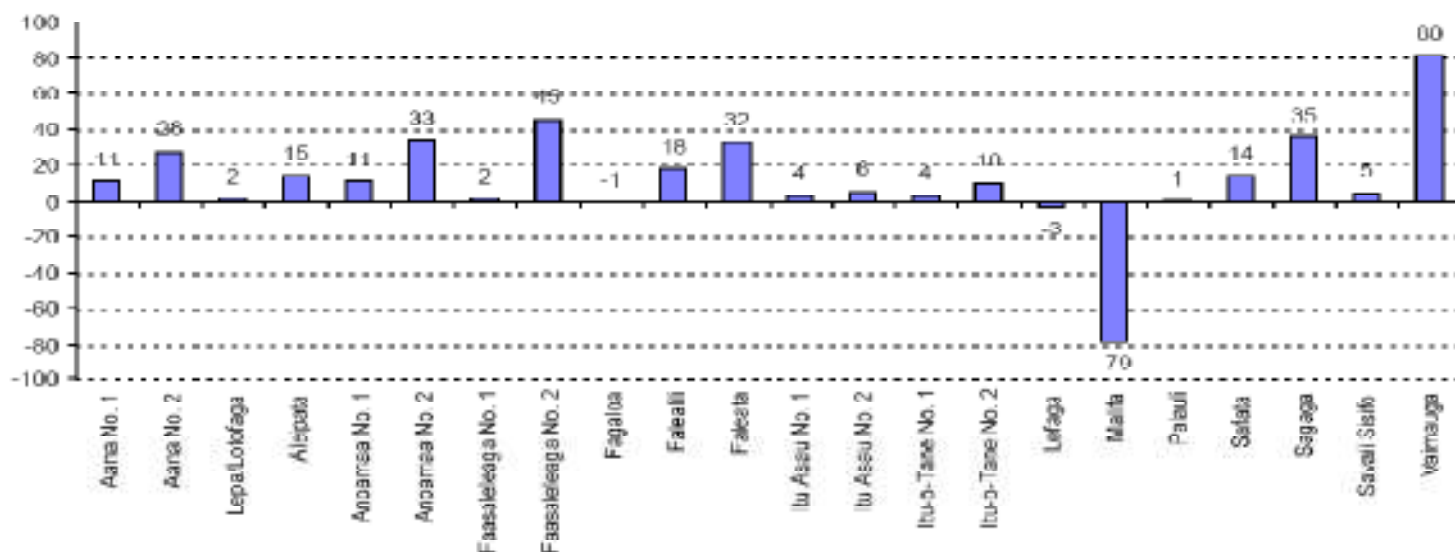
Year	Primary									Secondary						TOTAL
	1	2	3	4	5	6	7	8	Total	9	10	11	12	13	Total	
2000	52.7	51.5	53.1	50.8	51.8	51.3	51.8	50.5	51.7	50.0	48.9	51.2	45.9	45.5	48.8	50.9
2001	51.0	52.4	52.3	53.2	51.3	51.5	50.7	51.5	51.8	40.5	48.5	50.6	46.5	47.0	48.7	50.0
2002	51.8	50.9	52.6	51.8	53.2	51.8	51.5	51.3	51.9	50.8	49.0	50.3	46.9	43.5	48.8	51.0
2003	52.8	52.2	50.8	52.5	51.1	53.3	51.4	51.2	51.9	49.3	48.5	48.4	46.4	43.6	47.7	50.8
2004	52.2	52.7	52.5	51.1	52.3	51.0	52.7	51.9	52.0	50.1	47.8	49.1	46.7	43.7	47.9	50.9
2005	52.7	52.6	52.5	52.1	50.6	52.0	50.6	51.4	51.9	51.3	49.5	47.1	46.3	45.9	48.4	50.9
2006	52.2	52.1	53.1	52.7	52.4	50.4	51.1	51.2	51.9	49.8	49.0	46.4	46.3	42.1	47.4	50.7
2007	52.7	51.0	51.7	53.1	51.8	52.1	50.5	50.9	51.7	49.3	49.1	46.1	46.9	40.9	47.3	50.5
2008	52.4	52.0	51.3	51.8	52.4	52.2	51.5	50.4	51.8	49.4	48.8	45.5	48.4	43.4	47.6	50.6
2009	52.4	53.1	53.0	50.9	51.8	53.8	51.2	51.5	52.2	50.0	47.6	47.3	44.6	44.3	47.3	50.8



# School enrolments by district and maximum level provided, 2009

Region/District	Primary Enrolments, all schools			Secondary enrolments, all schools			Max level in 1994		Max level in 2009	
	1994	2009	% Increase	1994	2009	% Increase	Govt	Non-Govt	Govt	Non-Govt
Faleata	4202	6127	46	2409	2630	9	11	13	13	13
Molifa	4223			1471	1217	-17	12		13	
Vaimauga	4142	7931	90	1000	3236	83	13	13	13	13
<b>Apia Urban Total</b>	<b>12567</b>	<b>13958</b>	<b>11</b>	<b>5870</b>	<b>7082</b>	<b>21</b>	<b>13</b>	<b>13</b>	<b>13</b>	<b>13</b>
Aana No. 1	2303	2603	10	700	732	-4	11	12	12	13
Aana No. 2	1473	1735	18	227	435	92	11		13	
Aleipata	915	1078	18	248	252	2	11		12	
Anaemia No. 1	767	809	-21	158	415	166	11		13	
Anaemia No. 2	836	1248	33				8	8	8	8
Fagaloa	252	250	1		0		8		10	
Falealili	1472	1517	3	342	626	83	11		13	
Lefaga	856	627	-4	113	110	4	11		12	
Lepa/Lotofaga	705	775	3	213	252	18	11		13	
Safata	1235	1317	7	171	287	68	11		12	
Sagaga	2433	3464	42	1315	1601	22	11	13	12	13
<b>Rest of Upolu Total</b>	<b>13237</b>	<b>15283</b>	<b>15</b>	<b>3543</b>	<b>4718</b>	<b>33</b>	<b>11</b>	<b>13</b>	<b>13</b>	<b>13</b>
Faasaleleaga No. 1	1795	1910	6	765	697	9	11	13	13	13
Faasaleleaga No. 2	846	1163	37	447	715	60	11	13	13	13
Ilu Asau No. 1	983	822	16	217	420	94	11		13	
Ilu Asau No. 2	652	689	6				8		8	
Ilu-o-Tane No. 1	839	863	5	505	510	1	13		13	
Ilu-o-Tane No. 2	1101	1123	2	217	333	53	11		12	8
Palauli	1616	1662	4	771	724	-6	11	13	13	13
Savali Sisiifo	1764	1666	-6	326	524	61	11		13	
<b>Savali Total</b>	<b>9798</b>	<b>10138</b>	<b>3</b>	<b>3248</b>	<b>3623</b>	<b>21</b>	<b>13</b>	<b>13</b>	<b>13</b>	<b>13</b>
<b>Grand Total</b>	<b>35802</b>	<b>39379</b>	<b>11</b>	<b>12681</b>	<b>15723</b>	<b>24</b>	<b>13</b>	<b>13</b>	<b>13</b>	<b>13</b>

Percentage growth in enrolments since 1994, all schools

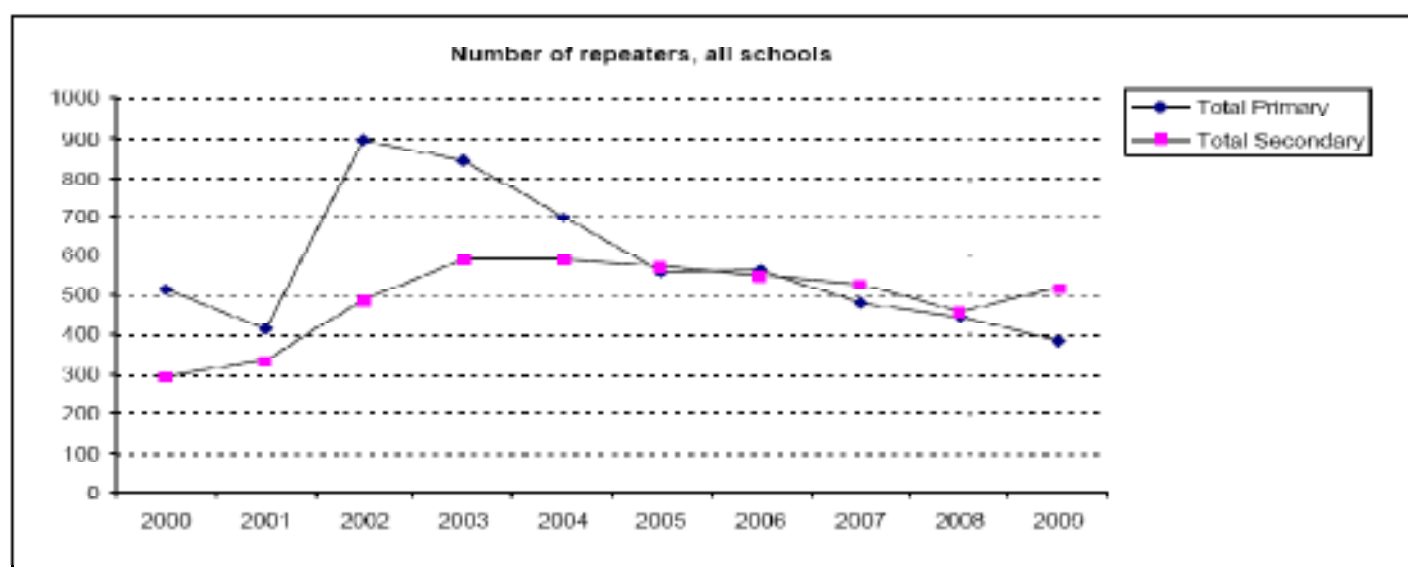


# Number of repeaters by level in 2009

Level	Number of Repeaters				Percentage of Enrolment			
	Government	Mission	Private	Total	Government	Mission	Private	Total
1	97	16	10	125	2.2	2.7	3.0	2.4
2	37	2	0	49	0.9	0.3	3.9	1.0
3	28	11	2	41	0.7	1.8	0.0	0.8
4	23	13	4	40	0.6	2.2	1.7	0.8
5	13	9	0	22	0.3	1.5	0.0	0.4
6	25	5	3	33	0.6	0.9	1.4	0.7
7	9	7	1	17	0.2	0.3	0.7	0.7
8	40	13	1	60	1.1	2.1	0.7	1.2
Total Primary	278	73	30	381	0.8	1.5	1.8	1.0
9	32	29	1	62	1.2	2.1	0.9	1.4
10	20	23	4	56	1.3	1.7	3.4	1.5
11	117	33	0	150	5.7	3.1	0.0	4.8
12	84	11	2	163	5.3	6.2	2.2	5.6
13	19	55	11	85	2.4	7.1	12.6	5.1
Total Secondary	201	217	16	516	3.0	3.7	4.4	3.3
Total	559	290	48	897	1.3	2.7	2.3	1.6

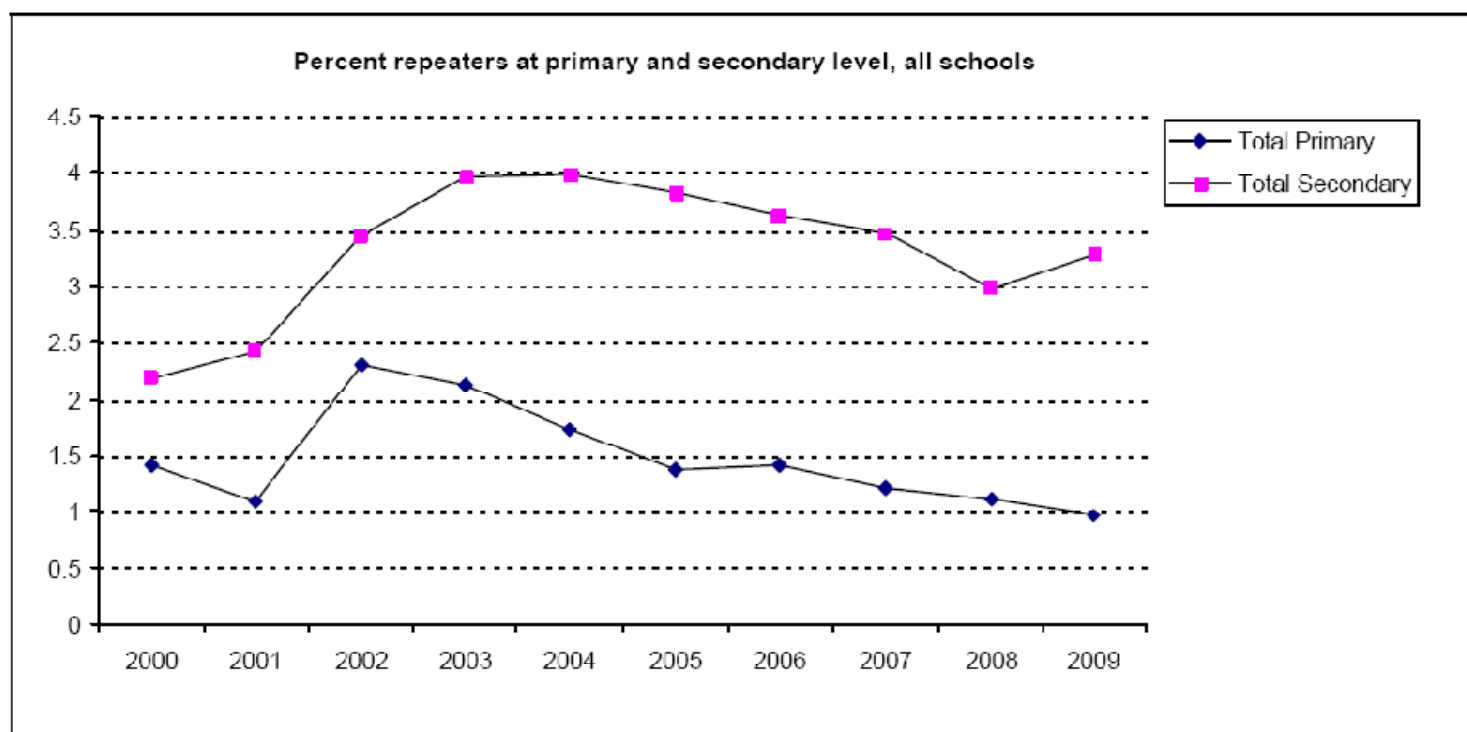
## Repeaters in all schools by level

Year	Primary									Secondary						TOTAL
	1	2	3	4	5	6	7	8	Total	9	10	11	12	13	Total	
2000	125	47	35	22	20	33	37	192	511	6	11	108	123	46	294	805
2001	136	38	20	28	26	12	34	122	414	15	14	112	113	78	332	746
2002	301	88	69	83	66	47	53	188	895	20	12	87	258	112	489	1,384
2003	345	70	58	66	40	62	45	155	841	19	8	139	279	143	568	1,429
2004	234	09	51	55	63	43	33	140	669	9	32	112	339	90	590	1,204
2005	223	51	34	41	36	24	41	105	555	32	28	88	274	148	570	1,125
2006	206	51	46	44	31	25	28	130	661	24	25	176	204	120	649	1,110
2007	205	39	22	55	17	28	42	70	478	46	12	108	245	116	527	1,005
2008	128	43	39	62	28	50	30	81	445	23	27	113	105	109	457	902
2009	125	48	41	40	22	33	17	60	381	67	56	150	163	85	516	897



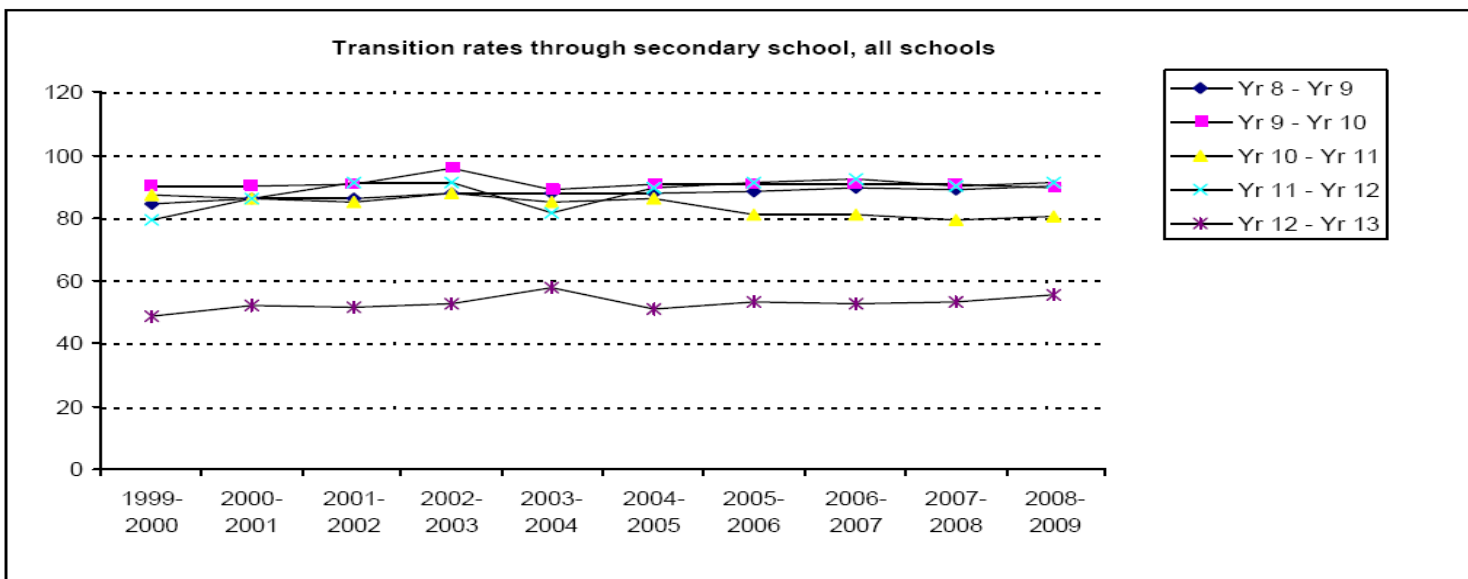
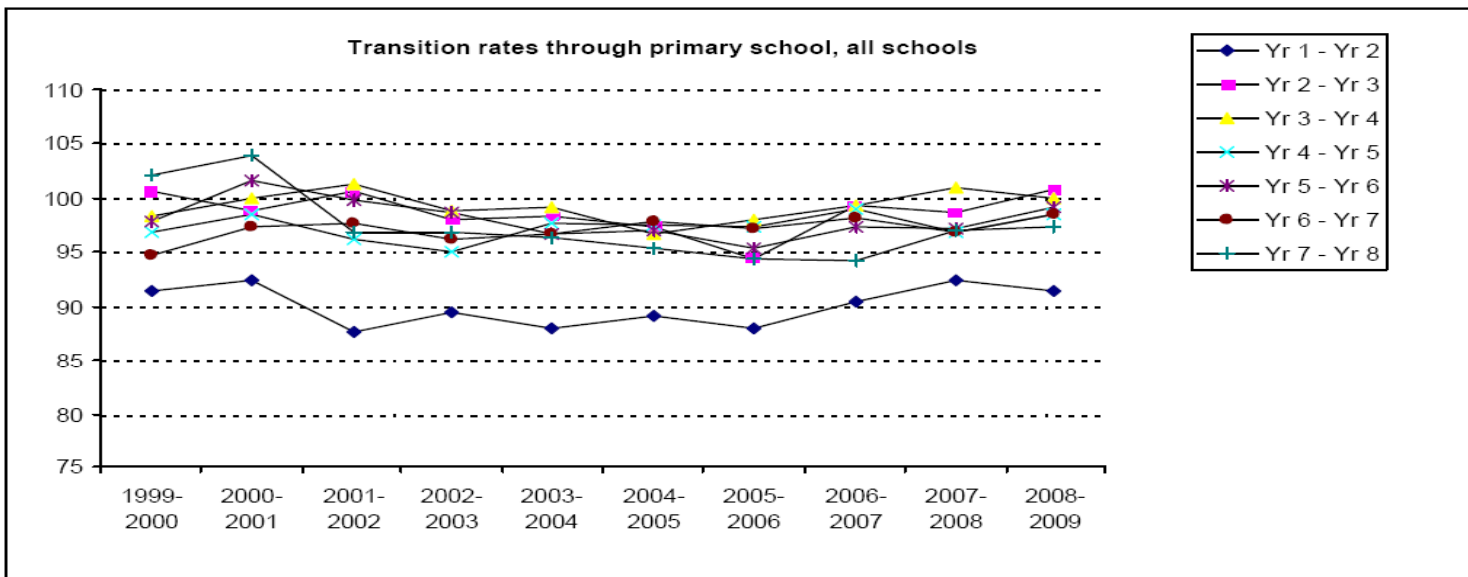
# Percentage of repeaters in all schools by level

Year	Primary									Secondary						TOTAL
	1	2	3	4	5	6	7	8	Total	9	10	11	12	13	Total	
2000	2.3	1.0	0.7	0.5	0.5	0.8	0.9	4.6	1.4	0.2	0.4	3.8	4.9	3.6	2.2	1.6
2001	2.4	0.7	0.4	0.6	0.6	0.3	0.8	2.8	1.1	0.4	0.4	4.0	4.4	5.6	2.4	1.5
2002	5.0	1.7	1.4	1.7	1.4	1.0	1.3	4.4	2.3	0.5	0.4	3.0	9.1	7.9	3.5	2.0
2003	5.9	1.3	1.1	1.3	0.8	1.3	1.0	3.7	2.1	0.5	0.2	4.6	9.7	8.8	4.0	2.6
2004	4.1	1.3	1.0	1.1	1.3	0.9	0.7	3.4	1.7	0.2	1.0	3.6	12.0	5.5	4.0	2.3
2005	4.1	1.0	0.7	0.8	0.7	0.5	0.9	2.3	1.4	0.8	0.8	3.0	8.8	9.3	3.8	2.1
2006	3.8	1.1	0.9	0.9	0.6	0.5	0.6	2.9	1.4	0.6	0.7	6.1	7.0	6.8	3.6	2.0
2007	3.9	0.8	0.5	1.1	0.3	0.6	0.9	1.5	1.2	1.1	0.3	3.6	8.4	7.0	3.5	1.8
2008	2.4	0.9	0.8	1.3	0.5	1.0	0.8	1.3	1.1	0.6	0.7	3.7	6.5	6.6	3.0	1.7
2009	2.4	1.0	0.8	0.8	0.4	0.7	0.2	1.2	1.0	1.4	1.5	4.8	5.6	5.1	3.3	1.6



# Transition rates by year level

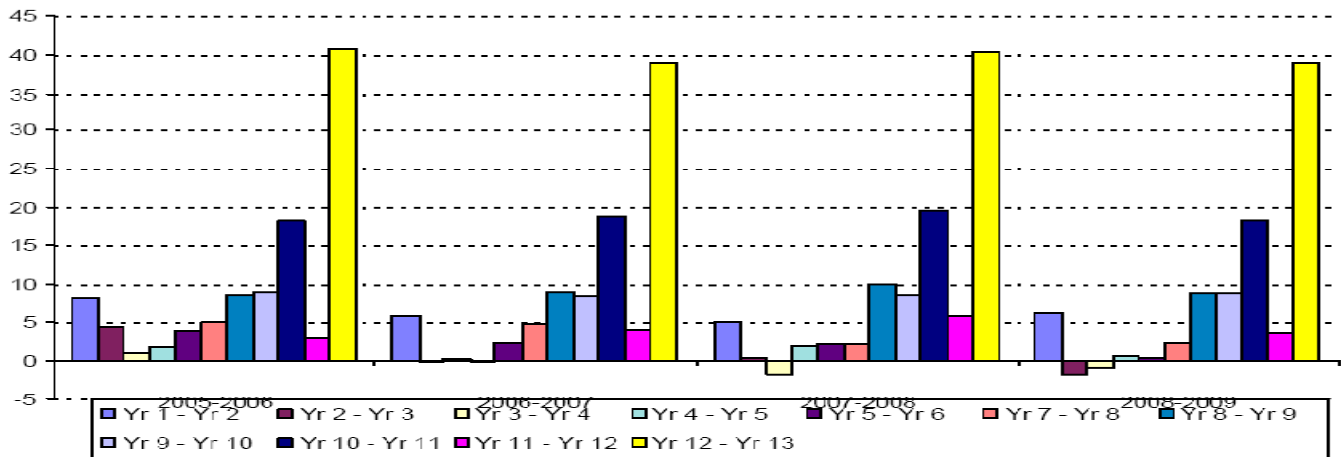
Year	Year Levels											
	1-2	2-3	3-4	4-5	5-6	6-7	7-8	8-9	9-10	10-11	11-12	12-13
1999-2000	91	101	98	97	98	95	102	84	90	87	79	48
2000-2001	92	99	100	99	102	97	104	86	90	86	86	52
2001-2002	88	101	101	96	100	98	97	86	91	85	91	51
2002-2003	89	98	99	95	99	96	97	88	96	88	91	52
2003-2004	88	98	99	98	97	97	96	88	89	85	82	57
2004-2005	89	97	97	97	97	98	95	88	91	86	90	51
2005-2006	88	94	98	97	95	97	94	89	90	81	91	53
2006-2007	90	99	99	99	97	98	94	89	90	81	92	53
2007-2008	92	99	101	97	97	97	97	89	91	80	90	53
2008-2009	91	101	100	99	99	99	97	90	90	80	92	55



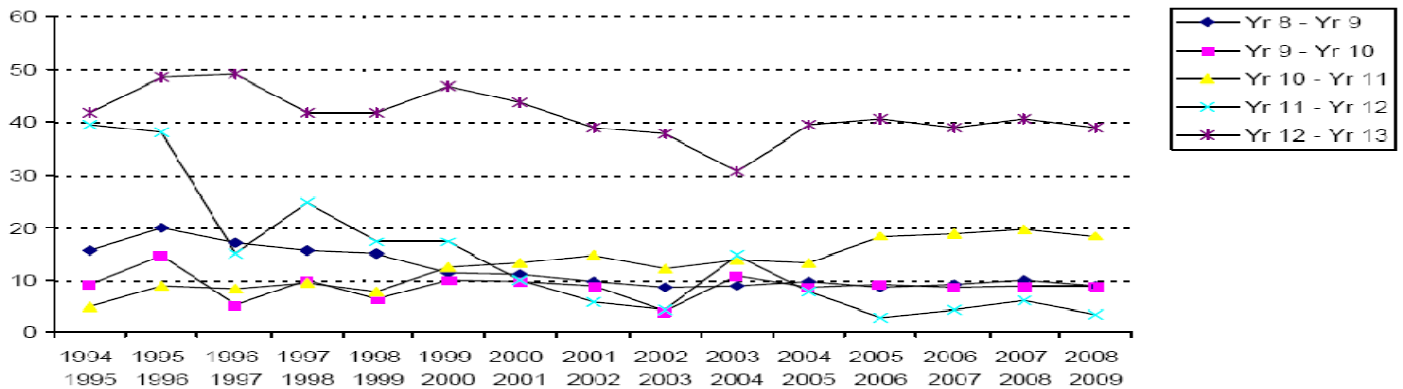
### Dropout rates (percentage) by year level

Year	Year Levels											
	1-2	2-3	3-4	4-5	5-6	6-7	7-8	8-9	9-10	10-11	11-12	12-13
1994-1995	6	0	-1	1	-2	2	-2	16	9	5	39	42
1995-1996	9	1	0	3	5	5	-2	20	15	9	38	49
1996-1997	10	2	1	2	2	2	-5	17	5	8	15	49
1997-1998	9	1	0	5	1	5	-1	15	10	9	25	42
1998-1999	8	2	2	3	2	7	1	15	6	8	17	42
1999-2000	6	-2	1	3	2	5	-3	11	10	12	17	47
2000-2001	5	0	0	1	-2	2	-5	11	10	13	10	44
2001-2002	7	-2	-3	2	-1	1	2	10	9	15	6	39
2002-2003	5	1	0	4	1	2	2	9	4	12	4	38
2003-2004	8	0	0	1	2	2	3	9	11	14	15	31
2004-2005	7	2	3	2	2	2	4	10	9	13	8	39
2005-2006	8	5	1	2	4	2	5	9	9	18	3	41
2006-2007	6	0	0	0	2	1	5	9	8	19	4	39
2007-2008	5	0	-2	2	2	2	2	10	9	20	6	40
2008-2009	6	-2	-1	1	0	1	2	9	9	18	4	39

Dropout rates (percentage), all schools



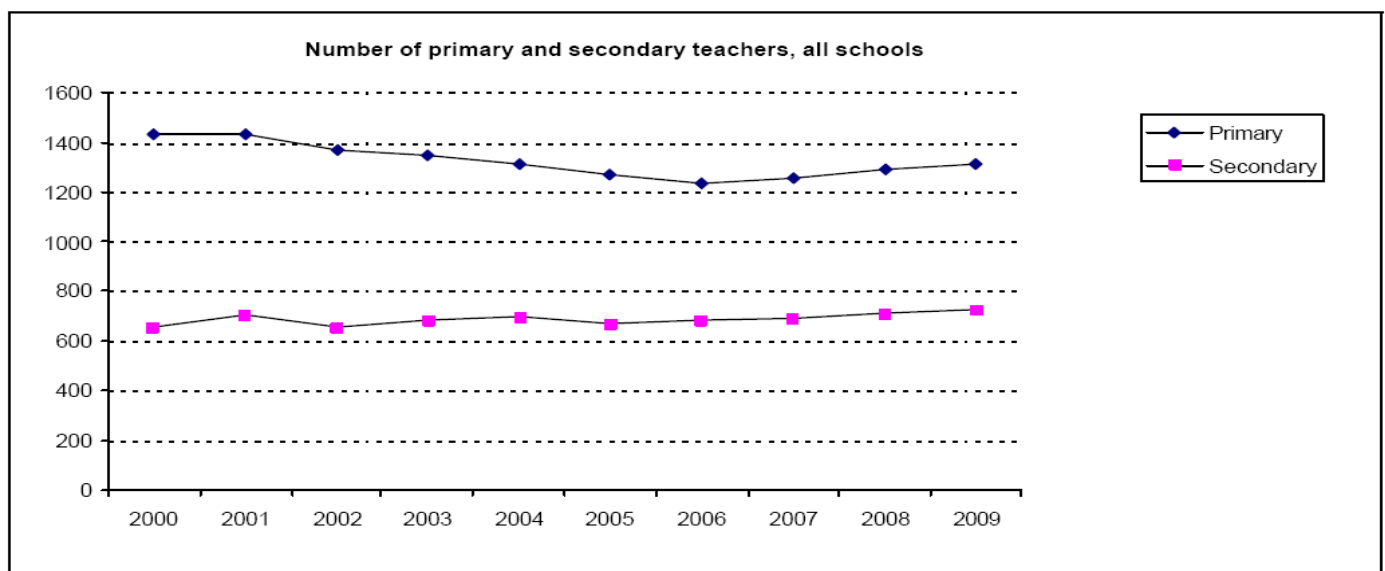
Dropout rates (percentage) through secondary school, all schools





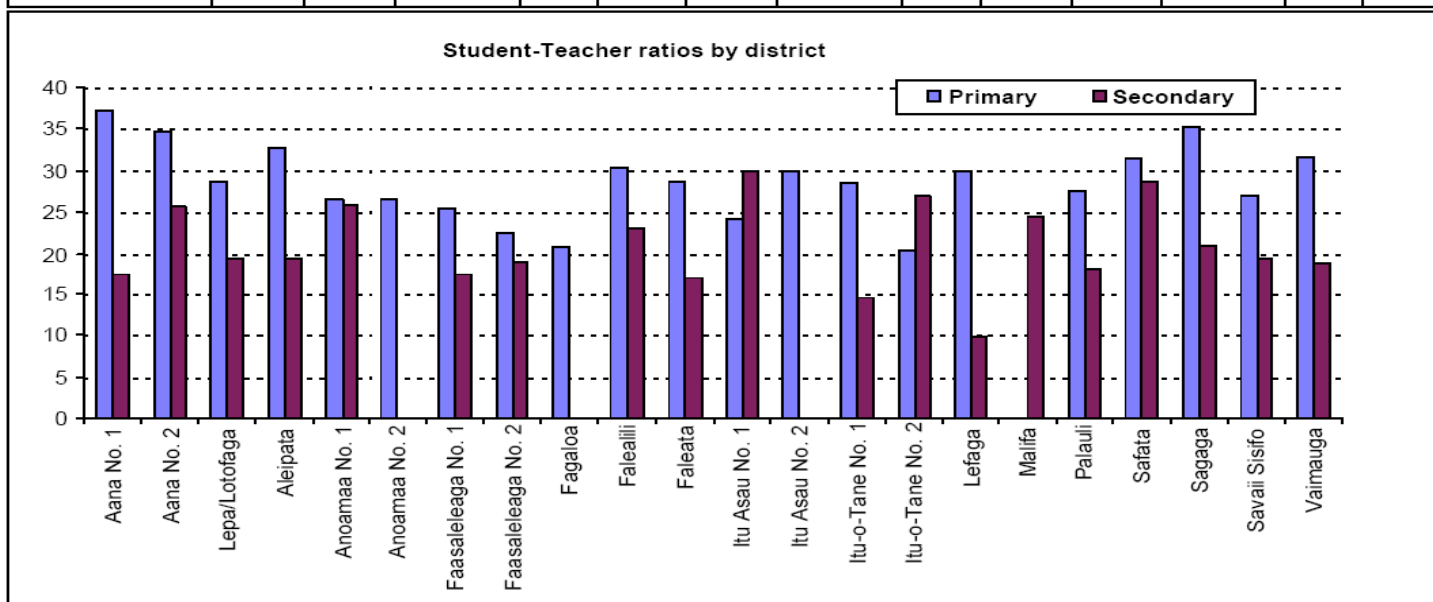
**Number of teachers by school type and district, 2009**

Region/District	Government				Mission				Private				TOTAL
	Primary	Pri-Sec	Second.	Total	Primary	Pri-Sec	Second.	Total	Primary	Pri-Sec	Second.	Total	
<b>Apia Urban</b>													
Faleata	135		28	163	13	49	61	123	58	19	12	89	375
Malifa			50	50									50
Vaimauga	143		114	257	63	22	53	138	30			30	425
Apia Urban Total	278		192	470	76	71	114	261	88	19	12	119	850
<b>Rest of Upolu</b>													
Aana No. 1	58		13	71	12	14	19	45					116
Aana No. 2	50		17	67									67
Aleipata	33		13	46									46
Anoamaa No. 1	23		16	39									39
Anoamaa No. 2	33			33	14			14					47
Fagaloa	12			12									12
Falealili	50		27	77									77
Lefaga	21		12	33									33
Lepa/Lotofaga	27		13	40									40
Safata	42		10	52									52
Sagaga	67		17	84	31		59	90					174
Rest of Upolu Total	416		138	554	57	14	78	149					703
<b>Savaii</b>													
Faasaleleaga No. 1	62		16	78	13		24	37					115
Faasaleleaga No. 2	40		18	58	10	22		32					90
Itu Asau No. 1	34		14	48									48
Itu Asau No. 2	23			23									23
Itu-o-Tane No. 1	31		35	66									66
Itu-o-Tane No. 2	47		12	59	9			9					68
Palauli	68		16	84			24	24					108
Savaii Sisifo	62		27	89									89
Savaii Total	367		138	505	32	22	48	102					607
Grand Total	1061		468	1529	165	107	240	512	88	19	12	119	2160



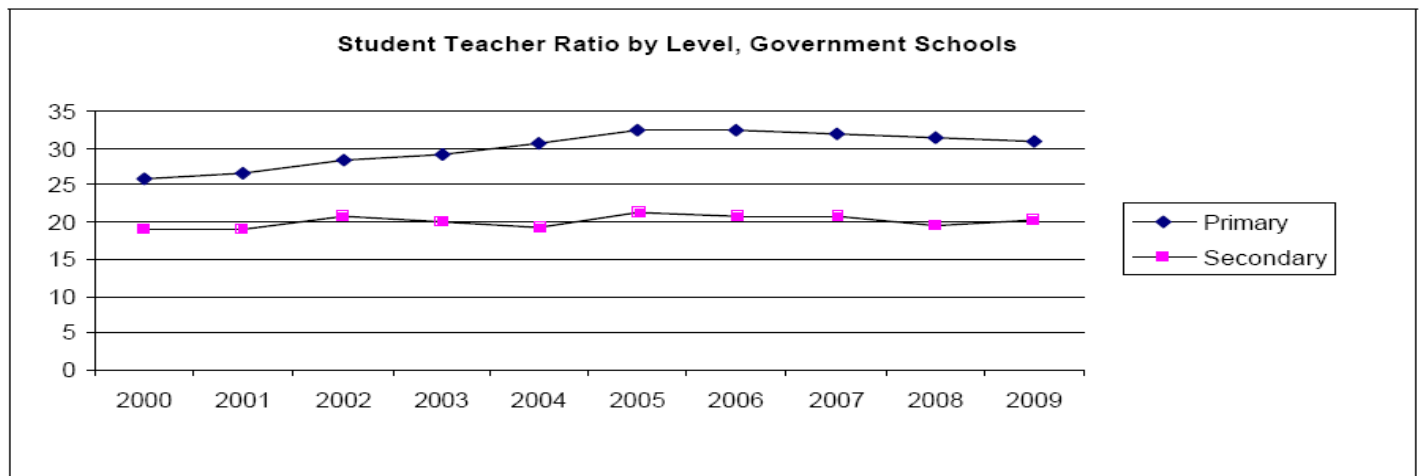
Student-Teacher ratios by school type and district, 2009

Region/District	Government				Mission				Private				Total
	Primary	Pri-Sec	Secondary	Total	Primary	Pri-Sec	Secondary	Total	Primary	Pri-Sec	Secondary	Total	
<b>Apia Urban</b>													
Faleata	33		16	30	26	16	19	18	19	15	16	18	23
Malifa			24	24									24
Vaimauga	35		18	28	30	23	20	25	18			18	26
Apia Urban Total	34		19	28	29	18	19	22	19	15	16	18	25
<b>Rest of Upolu</b>													
Aana No. 1	41		14	36	18	16	20	18					29
Aana No. 2	35		26	32									32
Aleipata	33		19	29									29
Anoamaa No. 1	26		26	26									26
Anoamaa No. 2	24			24	32			32					27
Fagaloa	21			21									21
Falealili	30		23	28									28
Lefaga	30		9.8	23									23
Lepa/Lotofaga	29		19	26									26
Safata	31		29	31									31
Sagaga	39		13	34	27		23	25					29
Rest of Upolu Total	33		20	30	26	16	23	23					28
<b>Savaii</b>													
Faasaleleaga No. 1	27		28	28	16		10	12					23
Faasaleleaga No. 2	23		23	23	21	16		17					21
Itu Asau No. 1	24		30	26									26
Itu Asau No. 2	30			30									30
Itu-o-Tane No. 1	28		15	21									21
Itu-o-Tane No. 2	21		27	22	16			16					21
Palauli	28		23	27			15	15					24
Savaii Sisifo	27		19	25									25
Savaii Total	26		22	25	18	16	13	15					23
Grand Total	31		20	28	26	18	19	21	19	15	16	18	26



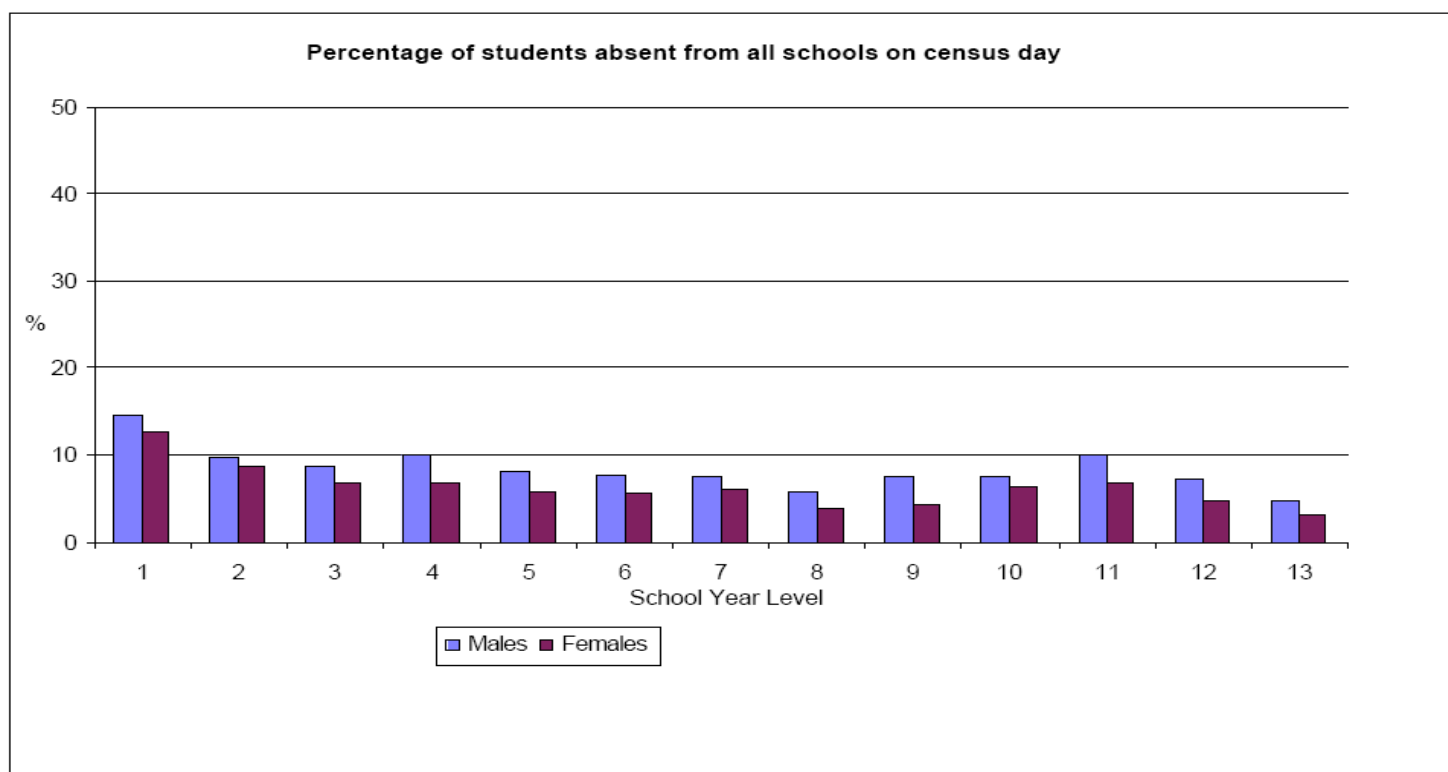
### Student Teacher Ratio by Level, Government Schools

Level	Primary Student Teacher Ratio	Secondary Student Teacher Ratio
2000	25.9	19.1
2001	26.7	19.1
2002	28.3	20.8
2003	29.2	20.1
2004	30.7	19.3
2005	32.5	21.3
2006	32.5	20.7
2007	32.0	20.9
2008	31.3	19.6
2009	30.9	20.3



### Number of students absent of Census Day

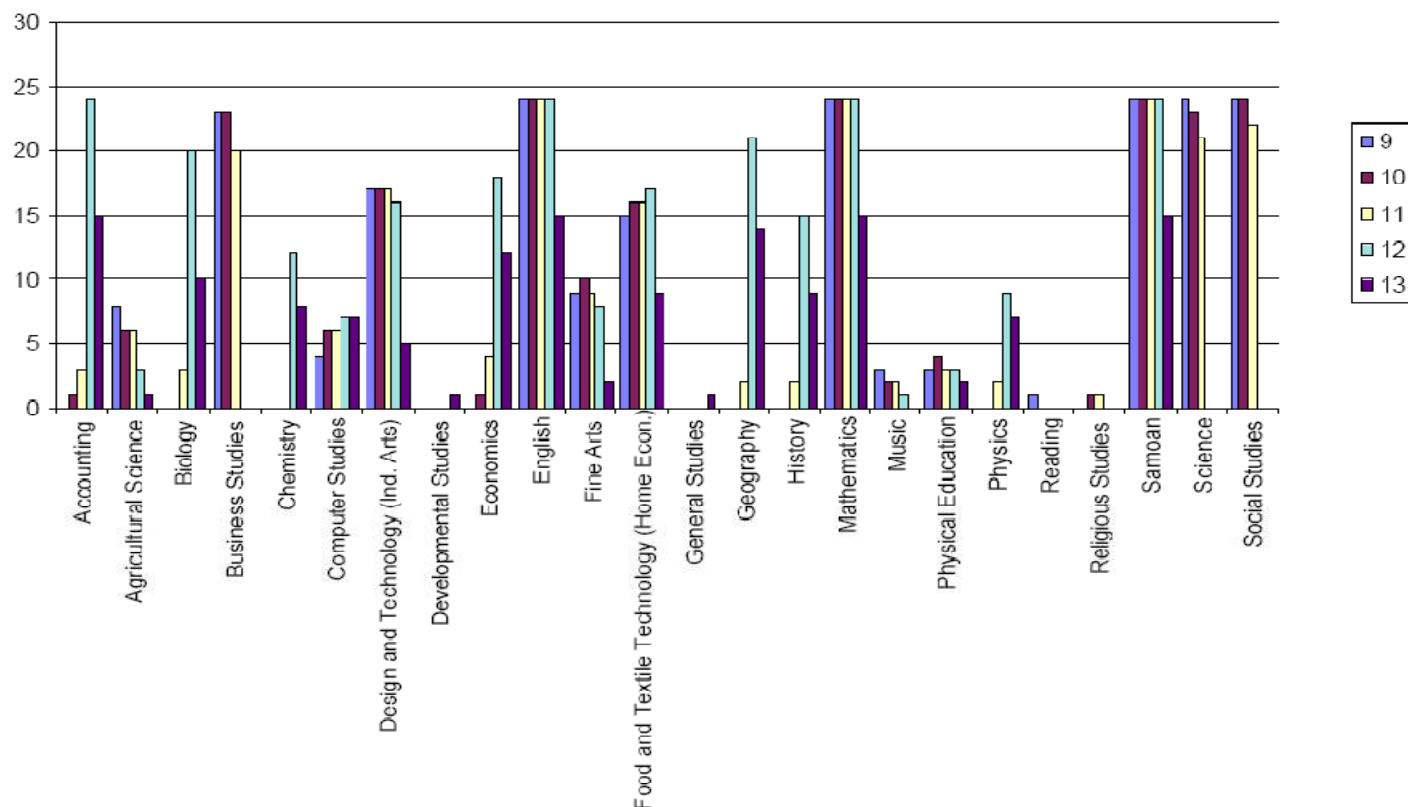
Level	Student Enrolments			No. of students absent			% Absentees		
	Males	Females	Total	Males	Females	Total	Males	Females	Total
1	2,757	2,506	5,263	402	319	721	14.6	12.7	13.7
2	2,566	2,264	4,830	254	201	455	9.9	8.9	9.4
3	2,640	2,343	4,983	233	163	396	8.8	7.0	7.9
4	2,508	2,417	4,925	253	167	420	10.1	6.9	8.5
5	2,536	2,363	4,899	207	139	346	8.2	5.9	7.1
6	2,562	2,201	4,763	197	126	323	7.7	5.7	6.8
7	2,505	2,391	4,896	187	146	333	7.5	6.1	6.8
8	2,484	2,336	4,820	143	95	238	5.8	4.1	4.9
9	2,144	2,140	4,284	160	95	255	7.5	4.4	6.0
10	1,779	1,957	3,736	133	126	259	7.5	6.4	6.9
11	1,469	1,639	3,108	149	113	262	10.1	6.9	8.4
12	1,305	1,621	2,926	96	78	174	7.4	4.8	5.9
13	739	930	1,669	36	30	66	4.9	3.2	4.0



### Number of Government Secondary Schools Teaching Curriculum Subjects by Level

Subject	School Year Level					Total
	9	10	11	12	13	
Accounting		1	3	24	15	24
Agricultural Science	8	6	6	3	1	8
Biology			3	20	10	20
Business Studies	23	23	20			23
Chemistry				12	8	12
Computer Studies	4	6	6	7	7	7
Design and Technology (Ind. Arts)	17	17	17	16	5	17
Developmental Studies					1	1
Economics		1	4	18	12	18
English	24	24	24	24	15	24
Fine Arts	9	10	9	8	2	10
Food and Textile Technology (Home Econ.)	15	16	16	17	9	17
General Studies					1	1
Geography			2	21	14	21
History			2	15	9	15
Mathematics	24	24	24	24	15	24
Music	3	2	2	1		3
Physical Education	3	4	3	3	2	4
Physics			2	9	7	9
Reading	1					1
Religious Studies		1	1			1
Samoan	24	24	24	24	15	24
Science	24	23	21			24
Social Studies	24	24	22			24

### Number of Government Schools teaching curriculum subjects



**Primary school facilities by Controlling Authority, 2009**

Controlling Authority	Facilities							
	Enrolment	Classrooms	Student Desks	Student Chairs	Computers	TVs	Telephones	Photocopiers
Baptist	398	30	584	584	12	2	5	2
Catholic	3,206	93	3,765	3,736	39	6	9	8
Government	32,794	1,318	24,364	32,380	158	20	53	42
L.D.S.	235	10	235	235	12	4	1	2
Methodist	344	12	370	370	1	1	1	1
Peace Chapel	216	10	196	206	3	1	1	1
S.D.A.	84	5	70	70	2	0	1	0
School Board/Com	1,433	49	1,818	1,549	65	5	15	11
<b>Total</b>	<b>39,700</b>	<b>1,527</b>	<b>31,170</b>	<b>39,109</b>	<b>290</b>	<b>39</b>	<b>85</b>	<b>67</b>

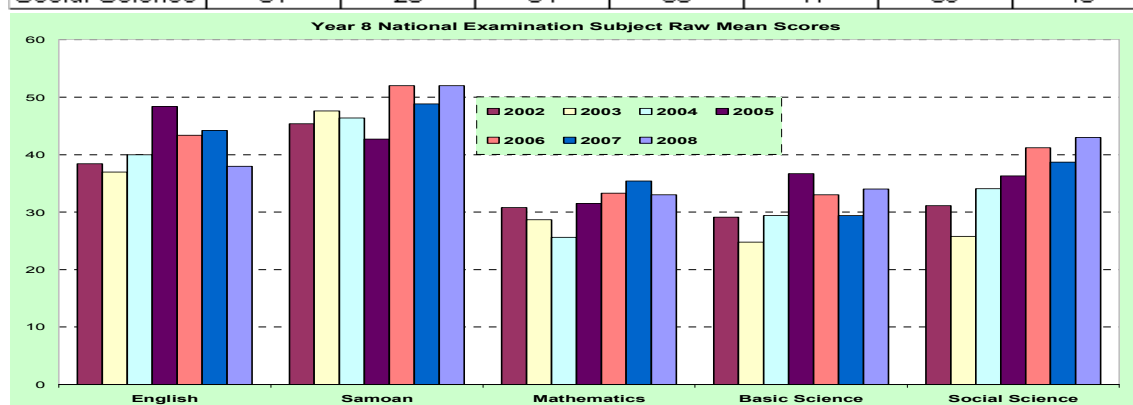
**Secondary school facilities by Controlling Authority, 2009**

Controlling Authority	Facilities							
	Enrolment	Classrooms	Student Desks	Student Chairs	Computers	TVs	Telephones	Photocopiers
C.C./C.S.	2,321	75	2,788	3,130	57	2	7	6
Catholic	1,369	55	1,873	1,914	115	3	9	6
Government	9,504	295	7,713	7,318	144	28	23	21
L.D.S.	1,159	55	1,199	1,089	129	24	13	5
Methodist	1,099	32	1,080	1,029	38	2	2	2
S.D.A.	501	15	495	500	23	1	4	1
School Board/Com	488	17	480	480	31	1	5	2
<b>Total</b>	<b>16,394</b>	<b>544</b>	<b>15,699</b>	<b>16,360</b>	<b>537</b>	<b>61</b>	<b>63</b>	<b>43</b>

*Part 2 – Data from Sources other than  
School Census Information System*

<sup>1</sup> Average raw score at National Yr. 8 Examinations  
All (Government and Non Government) for Core Subjects

Subject	2002	2003	2004	2005	2006	2007	2008
English	38	37	40	48	43	44	38
Samoan	45	48	46	43	52	49	52
Mathematics	31	29	26	32	33	35	33
Basic Science	29	25	29	37	33	29	34
Social Science	31	26	34	36	41	39	43

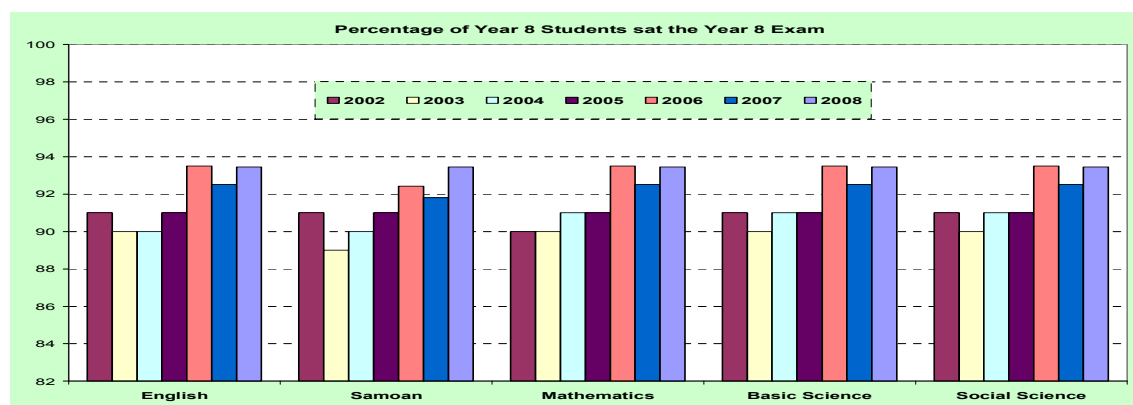


Number of Students sitting Yr. 8 National Examinations

Subject	2002	2003	2004	2005	2006	2007	2008
English	3850	3816	3961	4122	4171	4256	4396
Samoan	3854	3789	3929	4110	4123	4224	4396
Mathematics	3831	3816	3964	4122	4171	4256	4396
Basic Science	3854	3816	3965	4121	4171	4256	4396
Social Science	3849	3816	3966	4121	4171	4256	4396

Percentage of Yr.8 Students<sup>2</sup> that sat the Yr.8 National Examination  
All Students (Government and Non-Government)

Subject	2002	2003	2004	2005	2006	2007	2008
English	91	90	90	91	93	93	93
Samoan	91	89	90	91	92	92	93
Mathematics	90	90	91	91	93	93	93
Basic Science	91	90	91	91	93	93	93
Social Science	91	90	91	91	93	93	93



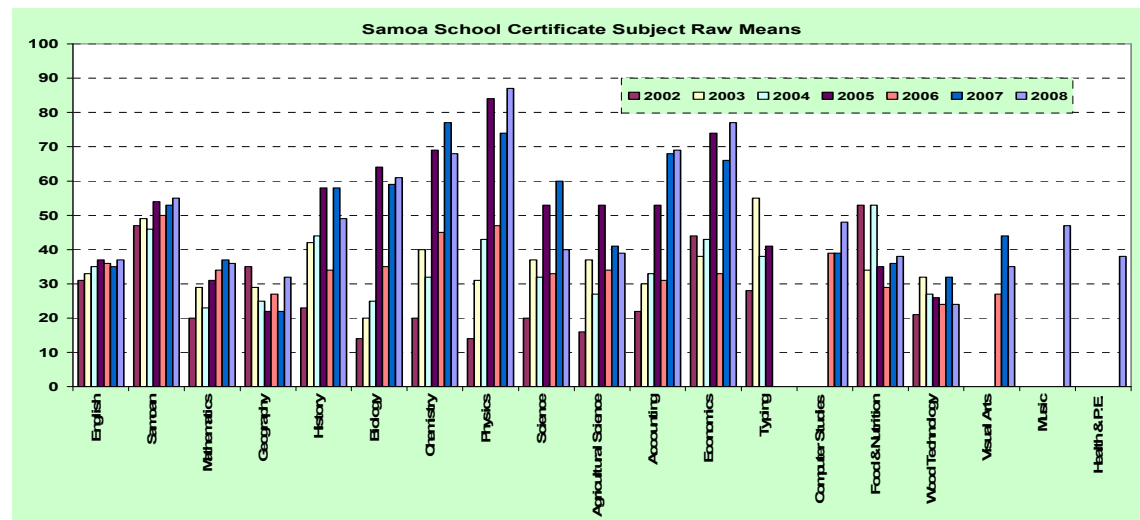
<sup>1</sup> Data at this stage is not available disaggregated by gender, location etc. (This is required to calculate performance measures 1.2, 1.4 of the Performance Framework)

<sup>2</sup> The percentage of year 8 students sitting year 8 exams is a measure of year 8 completion rate.



**Average Raw Score at National Year 12 Examinations  
All (Government and Non Government) for Core Subjects<sup>3</sup>**

Subjects	2002	2003	2004	2005	2006	2007	2008	Student sitting exam 2008
English	31	33	35	37	36	35	37	2317
Samoan	47	49	46	54	50	53	55	1759
Mathematics	20	29	23	31	34	37	36	1938
Geography	35	29	25	22	27	22	32	972
History	23	42	44	58	34	58	49	576
Biology	14	20	25	64	35	59	61	392
Chemistry	20	40	32	69	45	77	68	288
Physics	14	31	43	84	47	74	87	216
Science	20	37	32	53	33	60	40	17
Agricultural Science	16	37	27	53	34	41	39	114
Accounting	22	30	33	53	31	68	69	592
Economics	44	38	43	74	33	66	77	655
Typing	28	55	38	41				
Computer Studies					39	39	48	631
Food & Nutrition	53	34	53	35	29	36	38	203
Wood Technology	21	32	27	26	24	32	24	188
Visual Arts					27	44	35	124
Music							47	4
Health & P.E.							38	65



**Number of Students<sup>4</sup> sitting National Year 12 Examination  
All (Government and Non Government)**

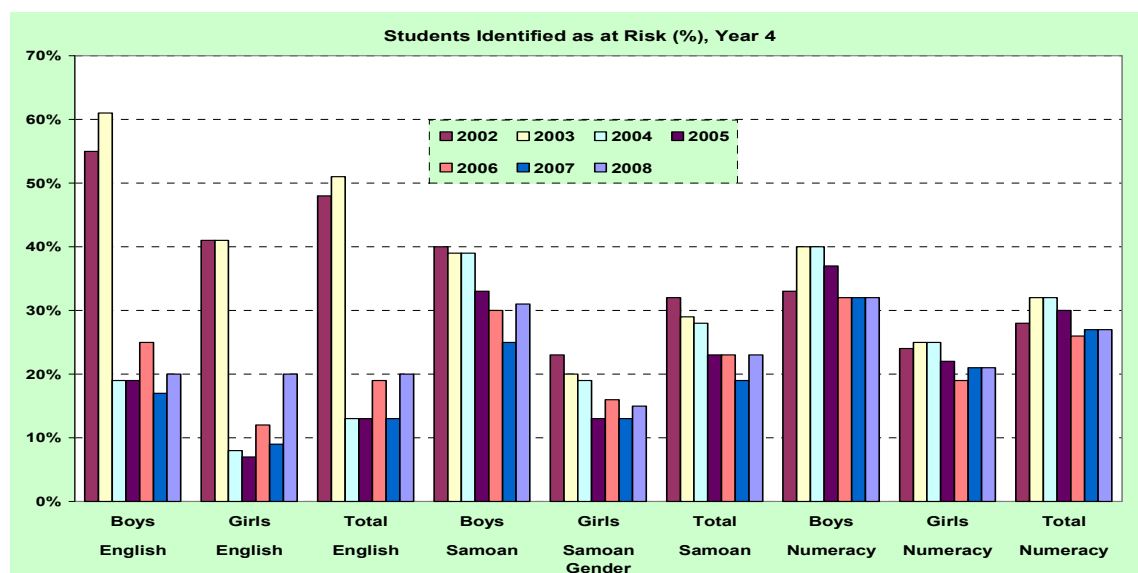
Number of students	2006	2007	2008
Sat National Year 12 Exam	2343	2228	2317
Enrolment in Year 12 (School Census)	2916	2909	2863
Percentage of Year 12 Students that sat the Year 12 Exam	80%	77%	81%

<sup>3</sup> Data at this stage is not available disaggregated by gender, location (1.2, 1.4 of the Performance Framework).

<sup>4</sup> Total number of students who sat any one of the year 12 exams. Note that no subjects are compulsory at year 12, however most students undertake English, Samoan and Mathematics. However, individual schools may have a policy of some subjects being compulsory.

**Primary Students Identified as at Risk<sup>5</sup>, Year 4, All Schools (Government and Non- Government)  
Results from SPELL One Test**

Subjects	Gender	2002	2003	2004	2005	2006	2007	2008
English	Boys	55%	61%	19%	19%	25%	17%	20%
English	Girls	41%	41%	8%	7%	12%	9%	20%
English	Total	48%	51%	13%	13%	19%	13%	20%
Samoan	Boys	40%	39%	39%	33%	30%	25%	31%
Samoan	Girls	23%	20%	19%	13%	16%	13%	15%
Samoan	Total	32%	29%	28%	23%	23%	19%	23%
Numeracy	Boys	33%	40%	40%	37%	32%	32%	32%
Numeracy	Girls	24%	25%	25%	22%	19%	21%	21%
Numeracy	Total	28%	32%	32%	30%	26%	27%	27%

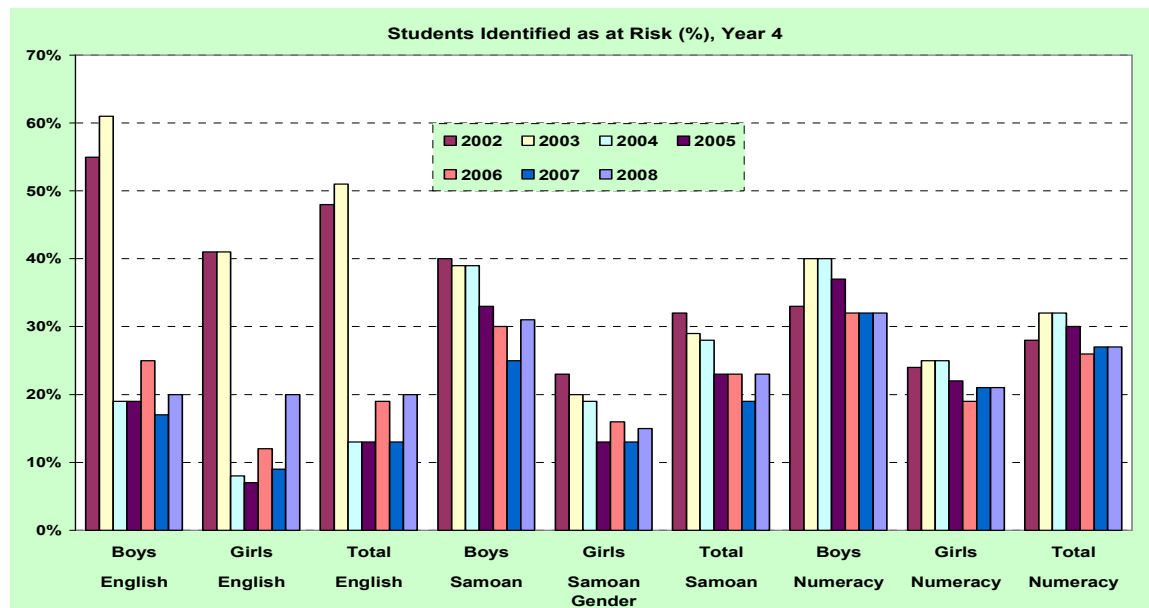


<sup>5</sup> A test taken by all year 4 students in Government schools. Most non-Government schools also participate, but it is not compulsory. It provides an indication of the students whose learning outcomes are identified as being at risk so that they receive attention from teachers in their reading and numeracy programmes.

**Primary Students identified as at Risk<sup>6</sup>, Year 6, Government Schools**

**Results from SPELL Two Test**

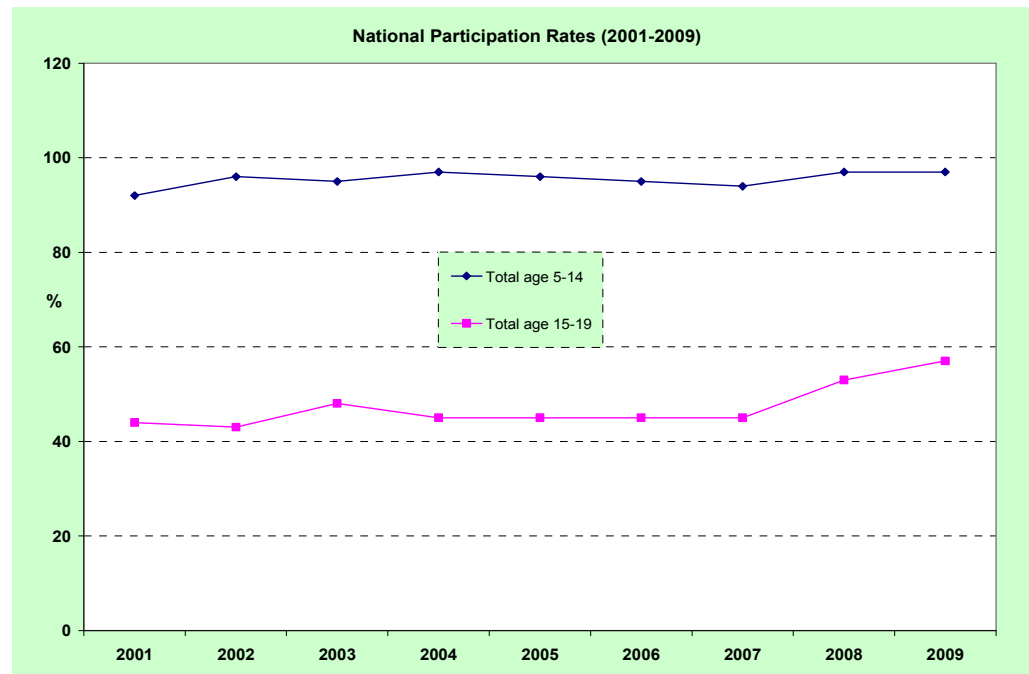
Subjects	Gender	2002	2003	2004	2005	2006	2007	2008
English	Boys	63%	68%	69%	69%	60%	67%	73%
English	Girls	38%	42%	44%	45%	45%	45%	47%
English	Total	50%	55%	56%	57%	53%	56%	60%
Samoan	Boys	27%	24%	17%	18%	18%	18%	22%
Samoan	Girls	11%	7%	12%	7%	7%	6%	8%
Samoan	Total	19%	16%	12%	12%	13%	12%	15%
Numeracy	Boys	68%	77%	76%	75%	63%	67%	68%
Numeracy	Girls	56%	64%	58%	59%	52%	51%	51%
Numeracy	Total	62%	71%	67%	67%	58%	59%	60%



<sup>6</sup> A test taken by all year 6 students in Government schools. Most non-Government schools also participate, but it is not compulsory. It provides an indication of the students whose learning outcomes are identified as being at risk so that they receive attention from teachers in their reading and numeracy programmes.

### *National Participation Rate*

	2001	2002	2003	2004	2005	2006	2007	2008	2009
Male age 5-14	92	96	95	97	96	95	94	94	98
Female age 5-14	93	96	95	96	95	95	95	99	96
Total age 5-14	92	96	95	97	96	95	94	97	97
Male age 15-19	42	39	44	42	42	41	42	49	53
Female age 15-19	47	46	53	49	49	48	49	57	61
Total age 15-19	44	43	48	45	45	45	45	53	57



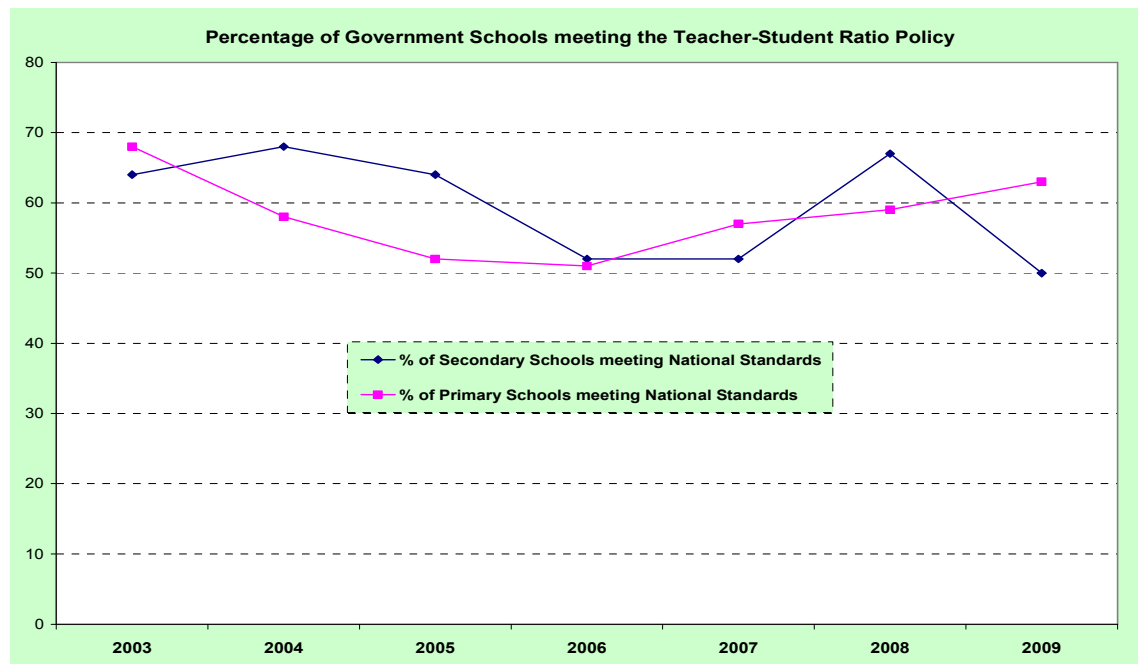
Source: Population estimates were provided by the Statistical Services Division of the Ministry of Finance and UNESCO

**Number of Government Schools that are meeting the National Standards for Primary Students – Teacher Ratio of 1 Teacher to 30 Students (1:30)**

Year	No. of primary schools meeting National Standard Ratios (1:30)	No. of primary schools above National Standard Ratios (1:30)	% of primary schools meeting National Standard Ratios (1:30)
2003	96	45	68
2004	82	59	58
2005	73	68	52
2006	72	69	51
2007	80	61	57
2008	83	57	59
2009	88	52	63

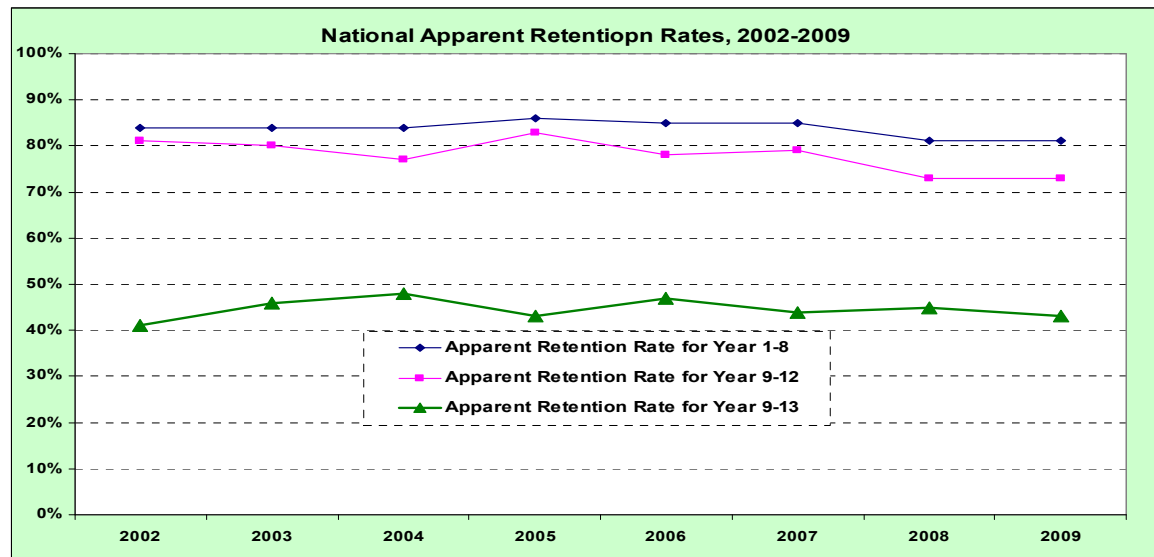
**Number of Government Schools that are meeting the National Standards for Secondary Students – Teacher Ratio of 1 Teacher to 20 Students (1:20)**

Year	No. of secondary schools meeting National Standard Ratios (1:20)	No. of secondary schools above National Standard Ratios (1:20)	% of secondary schools meeting National Standard Ratios (1:20)
2003	16	9	64
2004	17	8	68
2005	16	9	64
2006	13	12	52
2007	13	12	52
2008	16	8	67
2009	12	12	50



#### Apparent retention rate<sup>7</sup> for All Schools

Year Level	2002	2003	2004	2005	2006	2007	2008	2009
Apparent Retention Rate for Year 1-8	84%	84%	84%	86%	85%	85%	81%	81%
Apparent Retention Rate for Year 9-12	81%	80%	77%	83%	78%	79%	73%	73%
Apparent Retention Rate for Year 9-13	41%	46%	48%	43%	47%	44%	45%	43%



#### Students commencing First Year of Tertiary Studies<sup>8</sup>

Year	Institute of Higher Education (IHE)	Institute of Technology (IOT)	University of the South Pacific (USP)	Total
2004	411	382	Not Available	793
2005	444	381	Not Available	825
2006	557	353	Not Available	910
2007	529	384	Not Available	913
2008	456	438	Not Available	894
2009	442	308	Not Available	750

#### Transition Rate<sup>9</sup> from Year 13 to identified Tertiary Education

Year	Enrolment in Year 13	Total Tertiary Enrolment	Transition Rate from Year 13 to Tertiary
2004	1752	793	49
2005	1584	825	47
2006	1756	910	57
2007	1652	913	52
2008	1657	894	54
2009	1669	750	45

<sup>7</sup> Apparent Retention Rate compares the number of students in a given year with the size of the cohort some years ago. For example, the apparent retention rate of Year 9-12 for 2009 is calculated as the number of students in year 12 in 2009 divided by the number of students who were in Year 9 in 2006.

<sup>8</sup> Students commencing at USP are not included.

<sup>9</sup> Transition rate into Post School Education is the number of students who commenced post-school education in 2009 (Institute of Higher Education, Institute of Technology) as a percentage of the students who were in Year 13 in 2008. Students commencing at USP are not included.

