



Regional agroecology cooperation

The Wallis & Futuna demonstration farm network has seven farmers. It was inaugurated on Wednesday 10 February before a gathering of the selected farmers and representatives from the Territorial Assembly, traditional leadership, Department of Agriculture, Chamber of Commerce, Industry, Trades and Agriculture (CCIMA) and PROTEGE team.

Mickael Sansoni, a farmer from the New Caledonia farm network and an agroecology trainer, took this opportunity to visit Wallis Island from 8 to 13 February with the aim of providing an agroecology design training course that was attended by over 30 farmers and agricultural technicians. He was able to identify the needs

on the ground and fine-tune the solutions that would be trialled on Wallis & Futuna's demonstration farms. A second training session will be carried out to help farmers apply agroforestry principles on their plots, when the health situation allows.

Wallis & Futuna fisheries technician trained in New Caledonia

A Department of Agriculture, Forestry and Fisheries (DSA) technician underwent training in New Caledonia from 21 January to 5 February by means of a two-week immersion in the various units dealing with fisheries development in the territory's three provinces and SPC's FAME Division.

She benefited from experience sharing by the partner departments in commercial and non-commercial coastal fisheries support, assistance and monitoring. The newly acquired knowledge will be put to practical use in DSA's operations. The training met Wallis & Futuna's capacity building needs and was fully consistent with PROTEGE regional cooperation objectives. A big thank you to all the professionals who helped organise and supervise the training for the warm welcome they extended to the officer. Malo te ofa!



Regional community fisheries management

A regional community coastal fisheries management workshop was held from 2-4 March 2021 and attended by over 200 people. The virtual meetings were organised by SPC's FAME Division and attended by Pacific countries' fisheries departments, community representatives, associations and NGOs to discuss strengthening community fisheries management in the Pacific Islands.

Representatives of the three French territories were able to share their difficulties and discuss effective and appropriate approaches to strengthen community fisheries management, drawing on the experience of the other Pacific islands. This workshop made it possible to consolidate the intervention strategies of the PROTEGE project.

Upcoming activities

- Feedback workshop on the New Caledonia food system review on 6 July 2021
- Feedback workshop on the Wallis & Futuna food system review on 7 July 2021

To learn more

Watch the latest project clips on www.protege.spc.int or our social media accounts :

- [Black soldier flies \(BSF\) – French Polynesia](#)





AGRICULTURE AND FORESTRY

Agroforestry can help save water on French Polynesian atolls : Life in the Tuamotu group requires stringent freshwater management to simultaneously meet household, food and human activity needs. Some 75% of the resource comes from rainwater collection and 25% is pumped up from the atolls' freshwater lens. In order to develop fruit and vegetable market garde-

ning in the group, PROTEGE is funding agroforestry trial and demonstration plots on two French Polynesian farms on Fakarava and Rangiroa. The operation is being conducted in consultation with the French IUCN committee, a French Polynesian botanist and a New Caledonian farmer who already practises syntropic agriculture. Support trees, all growing already in the



Location of pilot plots on Fakarava

Tuamotus, have been selected and the first seedlings set up in nurseries.

© DAG PF



COASTAL FISHERIES AND AQUACULTURE

Sea cucumber stock assessment – NC : this major study funded by IRD and the Northern and Southern Provinces was officially launched at the 23 March 2021 training session with some 30 stakeholders in attendance, namely:

- Northern, Southern and Loyalty Island Province fisheries managers;
- Private operators who will conduct the study; and
- IRD, IFREMER and Australia's Southern

Cross University scientists. The one-day training session aimed at training all stakeholders to use the same sea-cucumber sampling method. Sampling will be conducted from late April to late July 2021 and cover 1500 sq. km at various sites in New Caledonia. The study aims to provide recommendations on sea cucumber export quotas for the high-demand Asian market while preserving marine resources.



Sea cucumbers - 1500 km2 under study in NC

© BASTIEN PREUSS



WATER



Mindai Creek

Watershed restoration activity launched – NC : three projects were selected in partnership with the French Biodiversity Agency (OFB), Government of New Caledonia and Northern and Southern Provinces to implement corrective measures and methods for restoring, protecting and preserving watersheds (see "Feedback from the Field" section).

Setting up the Fautau'a River monitoring network – FP : the Fautau'a runs through the Tahiti urban area and is the first water-course to benefit from a plan developed by French Polynesia to manage it in a concerted manner. Setting up a network to monitor the river's main physical and chemical characteristics in real time will help provide an understanding of how its water quality varies. The new information will assist in identifying the cause of declining water quality and in directing, managing and assessing measures taken under the management plan to preserve and restore the Fautau'a.

© Commune de Houailou



INVASIVE SPECIES



In-country lead facilitators, in the center.

IAS awareness on the Taputapuatea UNESCO Cultural Landscape site – FP : in late 2020, two local facilitators living on the Taputapuatea UNESCO Cultural Landscape site were recruited and trained to conduct community awareness training on issues relating to invasive species control. Practical training in awareness training and facilitation was provided by Raromatai En-

vironnement in mid-February 2021. It was also conducted on site to provide both facilitators with an introduction to recognising the main invasive species found on the UNESCO site and the heritage species that should feature in restoration.

© DIREN PF



PROTEGE



Pacific Community
Communauté
du Pacifique



SPREP
PROE

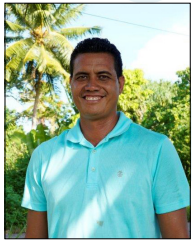


Financé par
l'Union européenne

FEEDBACK FROM THE FIELD



AGRICULTURE AND FORESTRY



Moetini Moutame

A member of the PROTEGE agroecology demonstration farm network in French Polynesia

I have a 2-hectare organic market garden in Papara. I wanted to apply for demonstration

farm status first and foremost to set an example for young people. I'm young myself and wanted to infect others with the farming bug and live off the land. I also want everybody to have access to organic vegetables. My objective is also to make organic food affordable to those who do not have a lot of money. Organic farming is, of course, more labour-intensive and I would like to work through this network on the costs and labour time involved.



Agroecology demonstration farm network in French Polynesia



Mikaele Neti, Tuitoafa, Malae Village chief

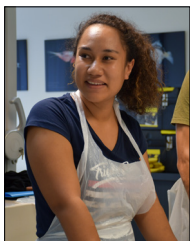
A member of the PROTEGE agroecology demonstration farm network on Wallis & Futuna

During my trip to New Caledonia last year, I met Mickael Sansoni and Guillaume Vama on demonstration farms there. They are men of the soil like me. We shared and learned a lot of things working together in the fields. It was very enriching and I was very pleased and honoured to have Mickael over to Wallis in return.



COASTAL FISHERIES AND AQUACULTURE

SKILL TRANSFER BETWEEN WALLIS & FUTUNA AND NEW CALEDONIA



Lotolelei MANUFEKAI

A technician at the Wallis & Futuna Fisheries Department

I was able to receive a fortnight of very intensive training by immersion in New Caledonia with the main aim of sharing

experience gained in Wallis & Futuna and New Caledonia. I began training on Ouvéa in the Loyalty Islands Province by meeting with the fishers' guild and visiting the seafood packaging unit, which was very important, because our commercial fishers on Wallis & Futuna had specifically requested feedback from those fishers. With Northern Province assistance and accompanied by technicians, I was then able to visit women who fish on foot all the way up to Poum. It was fishing permit renewal time while I was there and I noticed their system was very different from our own, which I shall point out to the Wallis & Futuna Fisheries on my return, so we can improve our procedures back home. In the Southern Province, we then discussed assistance, training and fish industry development. At the Pacific Community, I received training in biological sampling for studying sexual



Sharing and training in Ouvéa - NC

maturity in fish. This was a very enriching experience generally and a way of improving my technical skills. Sustainable fisheries management is very important for us here in Wallis & Futuna, because most people live off sea and land resources and we need to preserve them to be able to continue doing so. We are currently working on information and communication strategies under PROTEGE so as to raise fisher and community awareness.



PROTEGE



Pacific
Community
Communauté
du Pacifique



SPREP
PROE



Financé par
l'Union européenne

FEEDBACK FROM THE FIELD



WATER

WATERSHEDS IN NC

Houailou and Touho municipal authorities, ONFI and WWF were selected as the three project management agencies in New Caledonia (NC) tasked with implementing this activity aimed at applying corrective measures and methods to restore, protect and preserve NC's watersheds.

For further information, download the press kit.



The three selected project management agencies

© CPS



Pierre-Henri HELLEPUTE

Head of the European Union Office for Pacific OCTs

The climate-change and environmental challenge requires urgent and bold action. I call upon all stakeholders to meet and discuss solutions together so as to make the Territory less vulnerable to climate change.



Buse Peak - NC

© CPS



Céline MAURER

Territorial Delegate for New Caledonia and Wallis & Futuna, French Overseas Territory Biodiversity Department

The value of this type of project is that it demonstrates the need for public policy integration. Finding solutions for preserving water resources requires first examining the issue from different angles, including damaged terrestrial ecosystem restoration, fire prevention, invasive alien species control, community involvement and awareness training.



Julia RAVILLON

A Deputy Mayor of Touhou

With our heavily damaged water catchment areas and knowing how important they were for preserving and improving the quality and quantity of our water resources, we could not stand idly by. This is why we took the opportunity offered by this PROTEGE call for projects to protect and revegetate two of our watersheds, i.e. Kokingone and Haccinen.

It is extremely important to work in close cooperation with traditional leaders, the community and associations, as the work must not stop when PROTEGE ends. We should realise that protecting our forests is everyone's business and we can take action every day by doing the right thing in our various occupations, be they farming, hunting or tourism, etc.



Hubert GERAUX

Manager - New Caledonia
WWF New Caledonia

Water is a resource we must look after. We must realise that water has become a major issue and we all need to devote our energy to this resource so as to preserve it for the sustainable development we wish to see in New Caledonia. Without water, we will be unable to implement many other development policies, whether in tourism, agriculture or culture.



PROTEGE



Pacific Community
Communauté
du Pacifique



SPREP
PROE



Financé par
l'Union européenne