



## 2022 - With hopes for stronger cooperation

The year 2021 started on a hopeful note in terms of the pandemic, but COVID-19 had other plans. So the borders between the project's beneficiary territories remained closed and the territories were once again subject to long lockdowns. As a result, the health crisis continued to complicate implementation of our project. Territorial-level activities were hampered by slowdowns related, for example, to supply constraints and difficulties in providing expert advice.

Nonetheless, thanks to the energy of the project stakeholders, regional cooperation did continue. Although our exchanges were "confined" to videoconferences, we were able to hold discussions and share our experiences and good practices. Project actors were also offered the opportunity to participate in online regional trainings.

Despite these limitations, we ended the year with a 62 per cent commitment rate and more than 100 signed contracts. As in 2020, year-end 2021 was very busy as we worked to meet our commitments to the donor.

Undoubtedly, things will open up in 2022 and face-to-face contact will resume. In fact, New Caledonia and French Polynesia are now open, with flight connections restored. This suggests that we can anticipate discussion and cooperation workshops, field visits, experience sharing and meetings. Activities in the field continue and the project lessons-learned phase will be able to start as certain activities have been completed.

We hope to have the honour of hosting the fourth steering committee meeting on the sidelines of the EU-OCT Forum to be held in Noumea in late May 2022. We look forward to seeing you there!

## Notable food system initiatives in the Pacific

A census and mapping were done on actions and initiatives to develop and add value to local fishing and farm products and of health- and diet-related activities.

To promote them, PROTEGE uploaded a series of videos on the notable food system initiatives in the Pacific that are participating in the project to strengthen food systems sustainability in the European Pacific territories.

Find the videos on page 4 of this newsletter and at:

► [Link to the Youtube playlist](#)

This might interest you...



## A guide to monitoring marine environments that host aquaculture and pearl farming

This guide offers a method for identifying the pressures from aquacultural and pearl farming activities and defines parameters that can be used to establish environmental monitoring. In particular, it establishes the forcings by activity (fish farming, shrimp farming in cages and land tanks or ponds, hatchery production, and pearl farming) and offers a set of parameters and relevant sampling monitoring points to achieve the objectives. This new tool supports the work of operators and management committees to establish environmental monitoring mechanisms. French Polynesia's Department of Marine Resources presented the guide to consultants, researchers and farmers.

► [Consult the guide](#) in our Documentation section

► [PROTEGE article](#)



## Events

- **March:** Water forum (NC)
- **2 - 4 May:** Workshop restricted fishing area (PF)
- **Late May/early June:** PROTEGE regional steering committee meeting on the sidelines of the EU-OCT Forum (NC)

## BSF larvae production guide for chicken and pig feed

The Department of Agriculture has just published a guide to producing black soldier fly (BSF) larvae.

These larvae can feed on a wide variety of organic waste sources from peelings to food leftovers, copra and soybean cake, animal waste, grated coconut, manure and slurry

They are rich in nutrients (proteins and fat) and are a very attractive alternative food source for fish and animal production sectors (chicken, fish, shrimp and pigs).

The guide provides step-by-step instructions



© DAG PF

on how to build and set up a breeding kit and start breeding. It will be useful for anyone who has several laying hens or pigs. Also, as part of PROTEGE, a smartphone application will be available soon that will offer instruction on producing artisanal food products from local products, using multiple resources, including BSF larvae.

► [See the guide on the Department of Agriculture website](#)

► [See the guide on the SPC website](#)

### Wallis and Futuna

## Demonstration farm meeting – permanent mounds



© STEWIF

As part of the annual training programme offered by the Chamber of Commerce, Industry, Craft and Agriculture (CCIMA), a demonstration on building permanent mounds was held in January 2022.

The training was organized in collaboration with the PROTEGE network of agroecology

demonstration farms on Wallis and Futuna. Malia Falakika and Sosefo Sione welcomed around 15 farmers to their demonstration farms, including members of the youth group, Groupe Initiative Jeunesse (GIJ). Thanks to this joint work, these mounds were presented as a soil enrichment tool based on the different kinds of organic matter added, thereby preserving the planting bed's fertility over time. Participants also learned about the importance of following crop rotation principles to avoid the spread of disease and pests.

## Organic farming and biowaste management - FP

Approximately 15 farmers from the municipality were trained in organic farming techniques following a call for proposals issued by PROTEGE. The goal is to support the Teva I Uta municipality's involvement in organic farming and biowaste management through a circular economy model.

More specifically, the objective is to supply the Teva I Uta school cafeteria with organic produce grown in the fields next to the school, using compost from the kitchens. Some 80 kilos/week of biowaste will provide nutrients for school gardens, the municipal nursery and family vegetable gardens and for organic farming training sessions.

This activity helps to promote organic farming and integrate the municipality's young people into the workforce, promoting farming as an occupation and supporting the sustainability of the local food system.



© DAG PF

### New Caledonia

## Creating a hydrogeologic atlas



© DAVAR

As part of the first strategic objective of New Caledonia's shared water policy, an innovative tool was designed in collaboration with the BGRM, France's leading public earth sciences agency.

Since October 2020, all water resources have been mapped and digitized in a geographic database. The goal of this initiative is to improve knowledge of underground water resources and their potential and vulnerability to ensure that these environments are managed sustainably. Led by New Caledonia's Department of Industry, Mining and Energy and overseen by PROTEGE, this repository will be online soon and available to the public on Géorep.nc and on eau.nc, the digital water observatory, as a supplement to existing tools.

It will also be presented at the March 2022 Water Forum.



PROTEGE



Pacific Community  
Communauté  
du Pacifique







# Catch up on all the latest news on the website and on the PROTEGE app



<https://protege.spc.int>

and on our social media



## READ



### Mission accomplished: Creating awareness of invasive exotic species

The energetic PROTEGE team from French Polynesia's Department of the Environment raises awareness among a new class at the Puohine school.

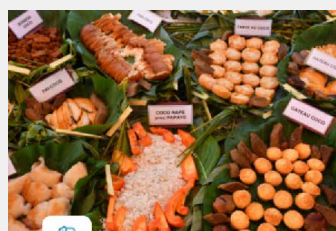
[Read the article](#)



### Promoting fishing products: Duty travel to Rangiroa

Representatives from the Department of Marine Resources travelled to Rangiroa in early February to meet with residents and discuss two studies on ...

[Read the article](#)



### Developing Wallis and Futuna's territorial food plan

As part of PROTEGE's goal to strengthen food system sustainability in the French Pacific OCTs ...

[Read the article](#)



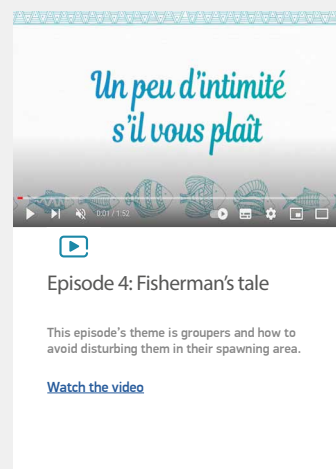
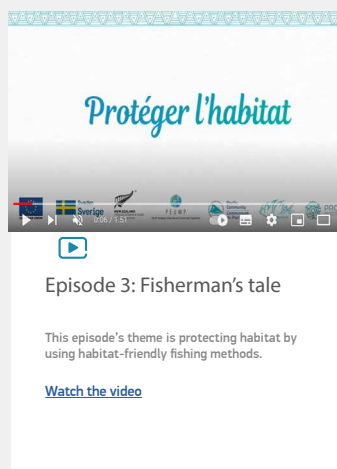
### Information dissemination and regional cooperation on Agriculture and Forestry in French Polynesia

Developing regional cooperation among the European Pacific overseas countries and territories is a key issue ...

[Read the article](#)



## WATCH



PROTEGE



Pacific Community  
Communauté du Pacifique



SPREP  
PROE



Funded by  
European Union



NOUVELLE  
CALEDONIE



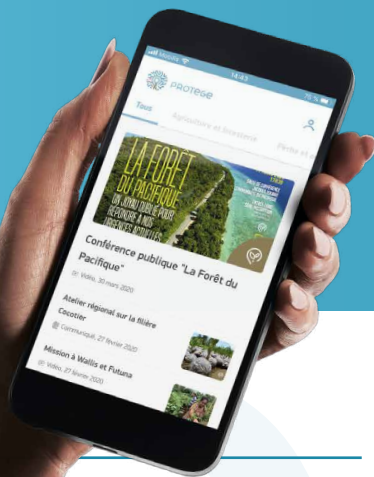
FRENCH POLYNESIA



WALLIS AND FUTUNA



PITCAIRN ISLANDS



# Spotlight on initiatives that address Pacific food systems



<https://protege.spc.int>

and on our social media



## WATCH



### Developing exchanges through shared gardens in Noumea - NC

The municipal social action centre and city of Noumea give shared gardens a boost...

[Watch the video](#)



### Selling and eating via short supply chains - NC

To respond to the urgent challenge posed by the health crisis, the website "Produits frais Agriculture Nouvelle-Calédonie" ...

[Watch the video](#)



### Establishing the healthy school concept - WF

The Wallis and Futuna Catholic Education Office has set out two priorities, i.e. healthy lifestyles and nutrition education...

[Watch the video](#)



### Collecting local species and encouraging people to plant them at home - WF

Tui Toafa, the village chief of Mala'e, set up a village nursery after a trip to New Caledonia, where he saw ...

[Watch the video](#)



### Sustainable development for Vaitupu village - WF

The main goal is to offer a village development approach that addresses sustainability concerns such as public health, healthy food, environmental preservation...

[Watch the video](#)



### Improving food self-sufficiency and economic development - FP

The main goal of this project is to improve families' food self-sufficiency and economic development through agricultural self-sufficiency...

[Watch the video](#)



### Promoting and delivering the Bio Pasifika brand - FP

The Organic Pasifika trademark helps to improve the promotion of agricultural products and offers consumers a guarantee that they're purchasing high-quality products ...

[Watch the video](#)



### Supporting municipalities to strengthen their school canteens - FP

The goal is to enable local authorities and agencies to become self-sufficient by developing their skills and resources...

[Watch the video](#)



### Promoting a healthy and sustainable diet - FP

The Food and Innovation Village is a biennial three-day educational event. Its main goal is ...

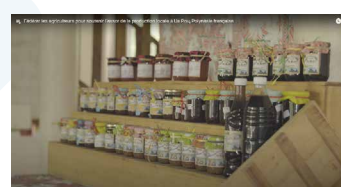
[Watch the video](#)



### Encouraging children to eat local products - FP

The goal of the Nuku Hiva municipal kitchen is to serve meals prepared with local products for children who attend the island's schools ...

[Watch the video](#)



### Bringing farmers together to help expand local production in Ua Pou - FP

The Te Oa'a'Pohue cooperative is a farm group that brings together commercial and artisanal farmers on Ua Pou in the Marquesas Islands ...

[Watch the video](#)





# FEEDBACK FROM THE FIELD



## Invasive species



### David Moverley

Invasive species team leader, SPREP  
Island and Ocean Ecosystems programme  
SPREP adviser

We are extremely proud to have granted the 2021 Battler of the Year Award to the Wallis and Futuna Environment Service team. Amid the COVID-19 pandemic, the team worked hard and achieved an outstanding outcome for biodiversity. Despite only receiving support on a remote basis and the challenges on-site posed by COVID restrictions, the team managed to work around the difficulties. Rat removal operations were carried out on four small offshore islands. The team also removed 30 large century plants and more than 1500 seedlings, along with more than 1000 sq m of taro vine. The work was carried out in an environment where invasive species are one of the main causes of biodiversity loss and are the main driver of species extinction on Pacific islands, whose natural habitats are particularly fragile.



© STE WFF

This issue was also raised during the interactive webinar organized as part of the New Zealand Ministry of Foreign Affairs and Trade's project, "Managing Invasive Species for Climate Change Adaptation in the Pacific". The webinar highlighted the work of the award-winning team from Wallis and Futuna so as to discuss their experiences and observations regarding the devastating impact of rats on the environment. This online gathering of countries from the Pacific and around the world could well mark the beginning of a regional invasive species mainstreaming strategy to be implemented over the next few years. ■



## Agriculture and forestry

### Arikinui NORDHOFF

Secretary of the Association to Protect the Punaruu Valley and project leader

The Punaruu Valley is located in the municipality of Punaauia on the west coast of Tahiti and is the island's second-largest watershed. Its high plateaus are home to many orange trees that were introduced to French Polynesia in the 1770s. These trees survived a tristeza virus outbreak at the end of the 1800s. Now the symbol of this municipality, the precious citrus species represents its heritage, traditions and culture. Jeopardised by multiple species that were introduced and have become invasive, this treasure is in danger of disappearing.

In practical terms, if nothing is done, they will be gone in 20 to 30 years. Given that situation, in 2016 we decided to launch campaigns to combat invasive species and save the existing orange trees. Thanks to PROTEGE, a seedling nursery will be developed in the high valley to lay the groundwork for future generations of orange trees. The goal is to produce everything onsite and to limit, to the extent possible, the risks of introducing new invasive pests (specifically, the little fire ant). Invasive species will also be crushed on site and composted to improve soil fertility as part of the effort to preserve this heritage. ■



2019 Orange Festival



Nursery, Orange Tree Plateau

© CPS



PROTEGE



Pacific Community  
Communauté  
du Pacifique



SPREP  
PROE



Funded by  
European Union



NOUVELLE  
CALEDONIE



FRENCH POLYNESIA



WALLIS AND FUTUNA



PITCAIRN ISLANDS

## FEEDBACK FROM THE FIELD



### Coastal fisheries and aquaculture

## Sustainable Fishing Day on Wallis and Futuna

On 27 November 2021, the CCIMA and the Agriculture Department (DSA), with support from PROTEGE, held a day-long event dedicated to sustainable fishing in Wallis. The gathering, which took place in front of the Mata-Utu cathedral, was held in connection with World Fisheries Day. The goal was to share knowledge about sustainable fishing and the preservation of coastal marine resources. ■



### Lotolelei Manufekai Ugatai

Fisheries technician with the DSA's office of support to fishers

This was the second Sustainable Fishing Day that we have held on Wallis. The event has three goals:

- (1) to bring together marine stakeholders – from small-scale and commercial fishers to government agency representatives, decision-makers and traditional chiefs;
- (2) to promote Wallis and Futuna's marine resources; and
- (3) to promote fishing as a livelihood along with sustainable fishing techniques.

This gathering provided an opportunity to speak to all our stakeholders, as well as to the general population, which plays an important role in sustainable fishing. As consumers of fish, the population must adapt their purchasing behaviours. If people continue to buy fish that is caught improperly, fishers will not make the effort to alter their techniques.

Fishers also play an important role by setting an example. By highlighting their sustainable techniques, they help to create awareness among future fishers and have an impact on their environment. ■



### Baptiste Jaugeon

PROTEGE fishing and aquaculture facilitator

Sustainable Fishing Day is important because it offers an opportunity to engage with the population on sustainable fishing practices.

Our resources are affected by poor fishing practices, as shown by the sex ratio indicator or the stage of sexual maturity of the fish in the fisheries stocks. Certain species are characterized by

an excessive number of immature individuals everywhere, which creates a downward trend among marine habitat populations.

These discussions make clear that we are not the only ones to note the continued use of fishing practices that are considered unsustainable, such as night spear fishing or fishing during spawning periods. This shared observation can create awareness and behaviour change. Children in particular should be encouraged to adopt these sustainable fishing techniques so that they can continue to eat a healthy diet, which includes fish. ■



PROTEGE



Pacific Community  
Communauté du Pacifique



Funded by  
European Union



NOUVELLE  
CALÉDONIE



FRENCH POLYNESIA



WALLIS AND FUTUNA



PITCAIRN ISLANDS



