

Conducting a multi-sector assessment of CRVS in Kiribati

KIRIBATI

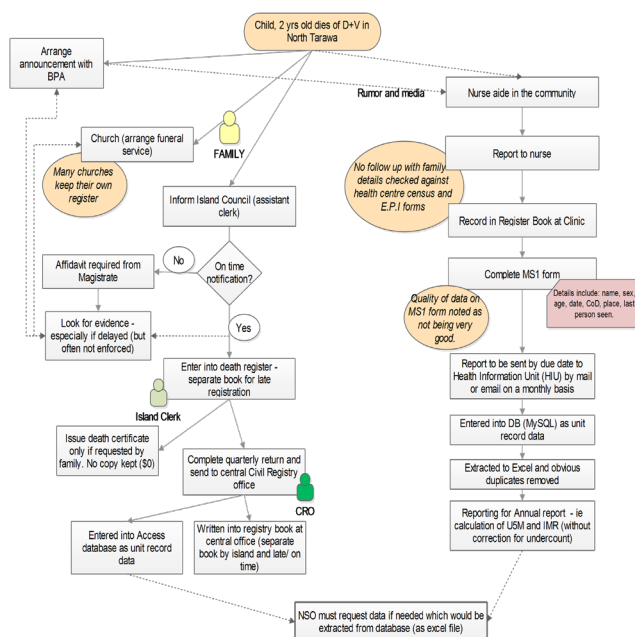


- Kiribati is currently undertaking a comprehensive assessment of their CRVS system.
- This assessment will form the basis of the national CRVS improvement plan to be completed early in 2015.
- The assessment has engaged a broad group of stakeholders including government departments, community representatives, church groups, and the media.
- This has complimented an ongoing program to strengthen civil registration, particularly through improved training and support for outer island offices from UNICEF which has seen birth registration increase from 68% to 82% in one year.

What was done

- The current assessment process germinated from a workshop initiated by the national committee in collaboration with development partners held in early 2014.
- The workshop engaged a broad group of stakeholders who mapped current reporting processes to identify how the system works, key issues associated with the system, and any efforts that were duplicated.
- This workshop was followed by a series of technical meetings to complete the components of the WHO Comprehensive Assessment Tool.
- As participants worked their way through each question of the assessment tool, the discussion generated was captured and used to flesh out the issues.
- Mapping and discussion showed the importance of involving island councils and community leaders to improve CRVS.

Example of scenario mapping



Key Stakeholders

- Ministry of Health (Medical Records, HIS office, HIV/AIDS program, doctors, Outer island Medical assistants, Clinic managers, Clinic nurses, Maternity ward etc)
- National Civil Registry Office
- Island Council clerks and assistant clerks
- Police
- Ministry of Justice & Attorney Generals Office
- National Statistics Office
- Church Representatives
- Community organisations.

Next Steps

A second national workshop is planned for early 2015. Results of the assessment will be presented to the broader stakeholder group for prioritization and preparation of a national plan.



Community leaders and churches are essential in any process to improve CRVS in Kiribati.



Mapping real scenarios has helped all stakeholders reach a common understanding of the system and issues.

SUPPORTED BY THE BRISBANE ACCORD GROUP (BAG)