

# SAR 9



Pacific  
Community  
Communauté  
du Pacifique



Australian Government  
Australian Maritime Safety Authority



## SAR BRIEF: *KINGDOM OF TONGA*

**Atunaisa TAUMOEPEAU**  
**National SAR Coordinator**  
**Tonga Police**  
**Uele Lima TELEFONI**  
**Marine and Ports**

# SAR 9



Pacific  
Community  
Communauté  
du Pacifique



Australian Government  
Australian Maritime Safety Authority



INTERNATIONAL  
MARITIME  
ORGANIZATION

## SAR GOVERNANCE

**SAR Advisory Committee** (to oversee the National Plan and to provide strategic leadership to the Search and Rescue system)

**SAR Coordinator** – Police (to coordinate the operational component of Search and Rescue as detailed in the Plan)

**A Joint Rescue Coordination Group (JRCG)** -Members of the organisations that support the National Search and Rescue Coordination

**Party to the International Convention on SAR**

***Not yet signed*** the *Maritime Search and Rescue technical agreement for cooperation 2013*

**Tonga National Maritime SAR Plan**

### **Challenges:**

- No specific *piece of domesticated legislation on SAR*
- SAR was not a priority in Government
- Lack of awareness



# SAR 9



Pacific Community  
Communauté du Pacifique

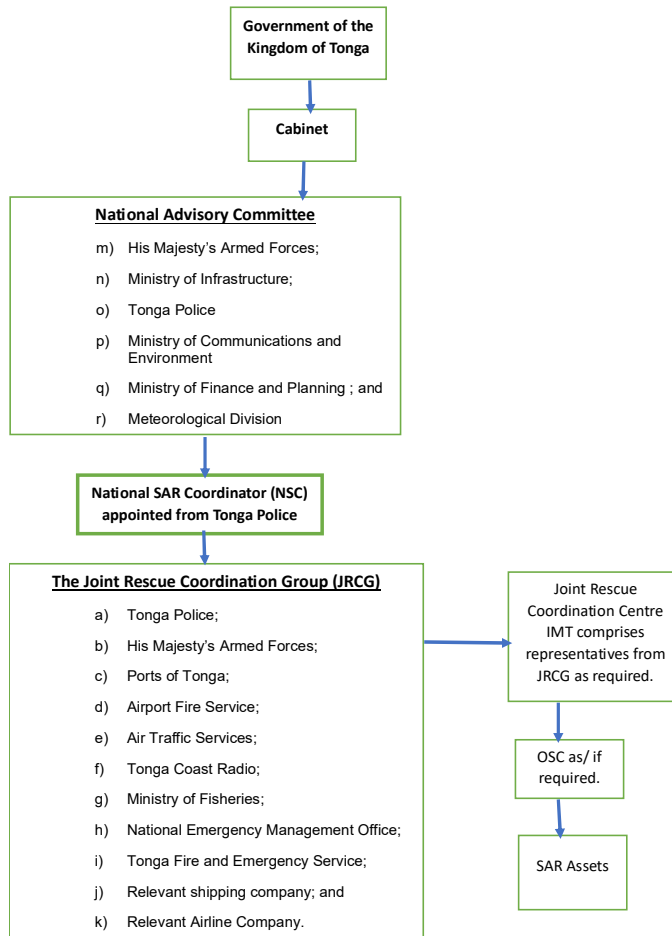


Australian Government  
Australian Maritime Safety Authority



INTERNATIONAL  
MARITIME  
ORGANIZATION

## Tonga Search and Rescue Organisation Chart



# Tonga SAR Organizational Chart ....

# SAR 9



Pacific  
Community  
Communauté  
du Pacifique



Australian Government  
Australian Maritime Safety Authority



INTERNATIONAL  
MARITIME  
ORGANIZATION

## SAR GOVERNANCE

SAR Legislation in place	National SAR Committee established	National SAR Plan in place	Signatory to SAR Tech Arrangement for Cooperation
No	Yes	Yes	No

### Ratification of various safety conventions of UN, IMO, and ICAO

International Civil Aviation 1944	Maritime Search and Rescue 1979	Safety of Life at Sea 1974	Convention on the High Seas 1958
Partially	Partially	Partially	Partially

# SAR 9

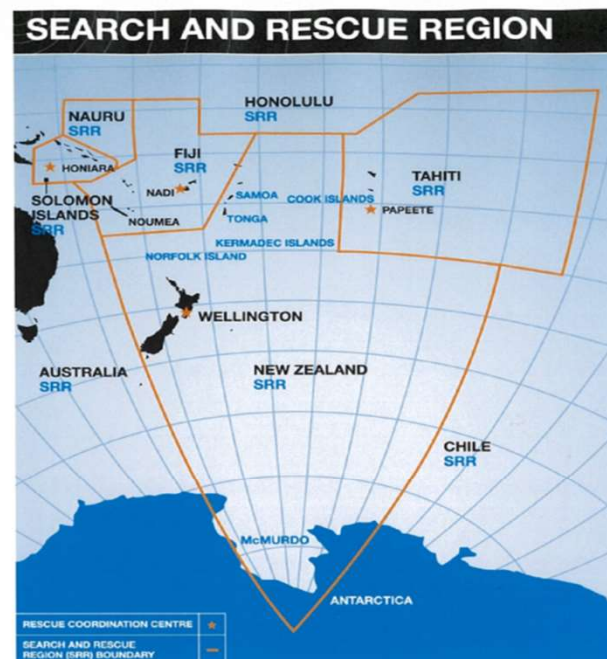


Australian Government  
Australian Maritime Safety Authority



## SAR COORDINATION

- **New Zealand's Search and Rescue Region**
  - Tonga sea area : 700,000 km<sup>2</sup>
  - Fiji SARR to the west and Tahiti to the east. environmental constraints (use a map if possible)
- **Rescue Coordination Centre**
  - Primarily Police Operation Centre (POC) at the Police Headquarter and HMAF's Maritime Coordination Centre (MCC) at the Navy base.
- **Key capabilities**
  - Police stations in all districts, Navy MCC and vessels as platform for remote operation, Maritime volunteer group, Tonga Coastal Radio. Most commercial ships and domestic Airlines, VMS assistance from MAFF.
  - Linked to national asset arrangements? SLA has been draft between Tonga Police and the Navy. MOU have been signed between Police and volunteer SAR group.
- **Key issue**
  - Lack of assets/ arrangements
  - Gaps in legislation for safety requirements
  - No designated SAR unit within Tonga Police.



New Zealand's Search and Rescue Region covers 30 Million Square Kilometres.

### 11.6. New Zealand's Search and Rescue Region (NZSRR)

- The NZSRR extends to 90° South;
- The NZSRR is bounded:
- West by meridian 163° 00' East;
- East by meridian 131° 00' West;
- South to the South Pole;
- North by a line joining: 25° 00' S 163° 00' E; 25° 00' S 180° 00' W; 05° 00' S 171° 00' W; 05° 00' S 157° 00' W; 30° 00' S 157° 00' W; 30° 00' S 131° 00' W.

# SAR 9



Pacific Community  
Communauté du Pacifique



Australian Government  
Australian Maritime Safety Authority



INTERNATIONAL  
MARITIME  
ORGANIZATION

## SAR COORDINATION

Maritime or Joint Coordinating Authorities established	Coordinating Authorities have appropriate systems, processes, and procedures	Coordinating Authorities have appropriate communication systems and response planning tools
Partially	Partially	Partially
List of deployable assets is developed and maintained	Coordinating Authorities have effective system for monitoring and documenting responses	Lessons management process is in place to support continuous improvement
Partially	Partially	Partially

# SAR 9



Pacific  
Community  
Communauté  
du Pacifique



Australian Government  
Australian Maritime Safety Authority



INTERNATIONAL  
MARITIME  
ORGANIZATION

## SAR RESPONSE

### **Key challenges**

- **A- Lack of resources such as:-**
  - a. as assume dedicated capability does have other priority (Police)
  - b. outdated equipment (TCR radio system)
  - c. In remote areas ( mobilize of unseaworthiness boat to an incident)
- **B – Limited multiagency training/ exercise**
- **C - No clear define roles/ responsibility to SAR agencies**
- **D – Segregation- some fishing associations have worked on their own and never report**

# SAR 9



Australian Government  
Australian Maritime Safety Authority



## Resources available

Qty	Assets	Response Time	Capability	Limitations
2	Guardian class Patrol Boats	ASP once infor receive	100 + tonnage	Can travel in 40kts wind
1	Navy Landing craft	As above	Transport 100 people	
3	Police rescue boats	20 – 30min	8 POB	2.5mtrs waves, 30kts safe heaven
2	Tugboats		Tow up 20,000 tons	
4	Passenger ferries	20 each	400 passengers each	
3	Transport barges	8 each	100 to 400 passengers, 500 tons of cargo each	
80	Small boats willing to assist within their nearby district areas		From 6 to 15 meters	Inconsistency of survey
2	Fix wing aeroplane	2 each	12 and 37 passengers	Range of 1000 miles



# SAR 9



Pacific  
Community  
Communauté  
du Pacifique



Australian Government  
Australian Maritime Safety Authority



INTERNATIONAL  
MARITIME  
ORGANIZATION

## SAR RESPONSE

SAR Standard Operating Procedures that align with the National SAR Plan are developed and in use	Training Needs Analysis is undertaken; Training Plans are developed and in use	Exercises that focus on preparedness for key risks are undertaken	Effective communication systems are established to support SAR coordination and response
Yes	Partially	Yes	Partially

# SAR 9



Australian Government  
Australian Maritime Safety Authority



## SAR PREVENTION

### Initiatives

- A. Small & isolated islands SAR & Small boats safety workshops/ consultations.
- B. Police Enforcement on safety of life at sea for small boats.
- C. Draft legislation for small boats' (5 meters and above) to be inspected/ surveying
- D. Challenges** - Lack of awareness on requirement of safety equipment on-board.

### Opportunities

- **A**- PMSP Tonga Steering Committee to monitor the programme being identified
- **B** – Review and further promote regular community out reach on safety at sea.
- **C** – Renew current capability. Police rescue boats.
- **D** – Learn about newer technology

# SAR 9



Pacific  
Community  
Communauté  
du Pacifique



Australian Government  
Australian Maritime Safety Authority



INTERNATIONAL  
MARITIME  
ORGANIZATION

## SAR PREVENTION

Maritime safety education programmes are implemented	Maritime safety regulations (and compliance regimes) are in place	Mariners have access to appropriate safety equipment	Increased use of technology-based safety equipment (e.g. distress beacons, mobile/emerging technologies)
Partially	Yes	Partially	Yes

SAR 9



Australian Government  
Australian Maritime Safety Authority



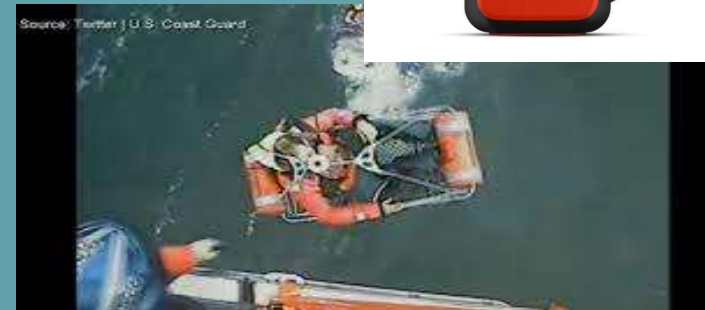
# WHAT IS THE ONE THING....

- **We do really well:**

- National and international Coordination of SAR operation.
- Conducting of multiagency exercise.
- Sharing information

- **We could do more effectively?**

- Communication capability need to improve.
- Debriefing of SAR operation .
- Collating and maintaining of data.
- Capacity building for sea fearers is not encouraging.
- Enforcing Maritime Law



# SAR 9



Pacific  
Community  
Communauté  
du Pacifique



Australian Government  
Australian Maritime Safety Authority



INTERNATIONAL  
MARITIME  
ORGANIZATION

## QUESTIONS

