

# REEFLEX

Law and policy for sustainable coastal fisheries and aquaculture management in the Pacific

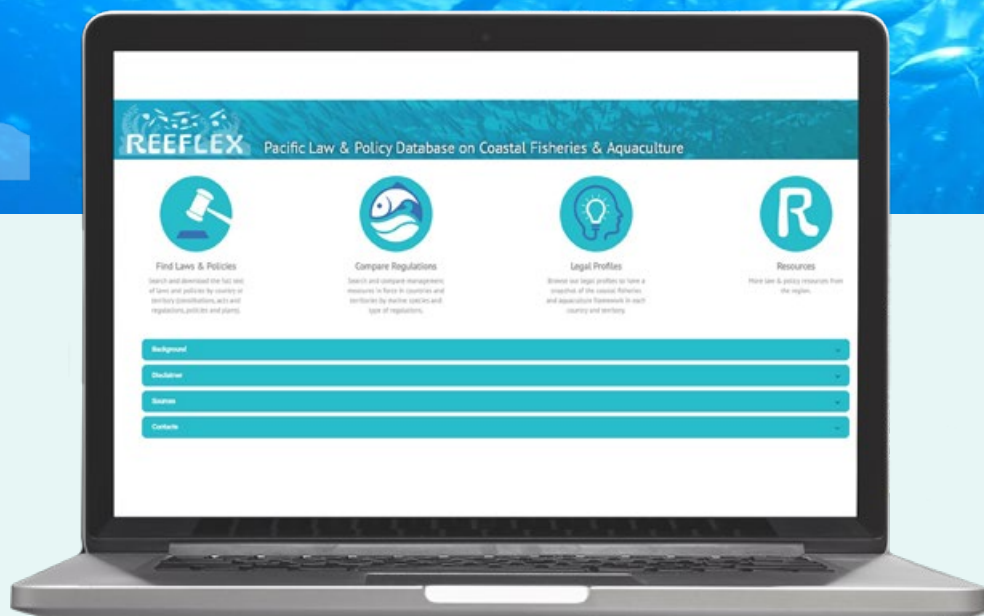
Have you ever wondered how laws and policies impact our coastal fisheries and aquaculture? Are you curious about finding the right information on how these vital resources are managed? Just Google SPC REEFLEX and you'll be connected to an online database that is changing the way we navigate coastal fisheries and aquaculture regulations at the Pacific Community (SPC).

Policy and legislation play a crucial role in guiding responsible fishing and aquaculture practices in coastal areas, acting as a lighthouse, indicating the path towards sustainable management of marine resources. By supporting management measures based on science and local knowledge, legislation promotes an enabling environment for fair and inclusive management, as well as favourable conditions to protect coastal and marine livelihoods for future generations.



Pacific  
Community  
Communauté  
du Pacifique





## A user-friendly voyage

In response to the need for better access to coastal fisheries legislation, REEFLEX emerged as a game-changing tool. This online database provides quick and easy access to compare laws and policies on coastal fisheries and aquaculture management in 22 Pacific Island countries and territories and in Timor Leste.

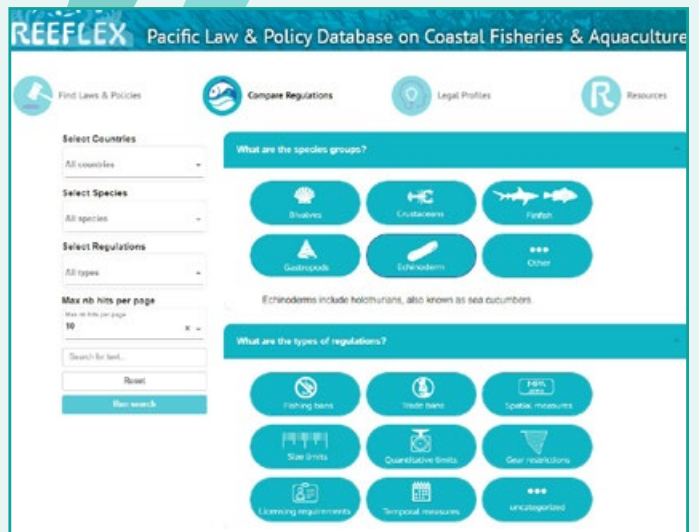
With its user-friendly interface and multiple functions, REEFLEX enables government agencies, researchers, lawyers and non-state actors to access reliable and up-to-date legal information and take informed decisions for effective management. It simplifies the navigation of complex legal documents, fostering greater understanding and compliance. It also reinforces the nexus between policy and science by allowing comparison between management measures in place in each PICT for single marine species and species groups.

## What is REEFLEX all about?

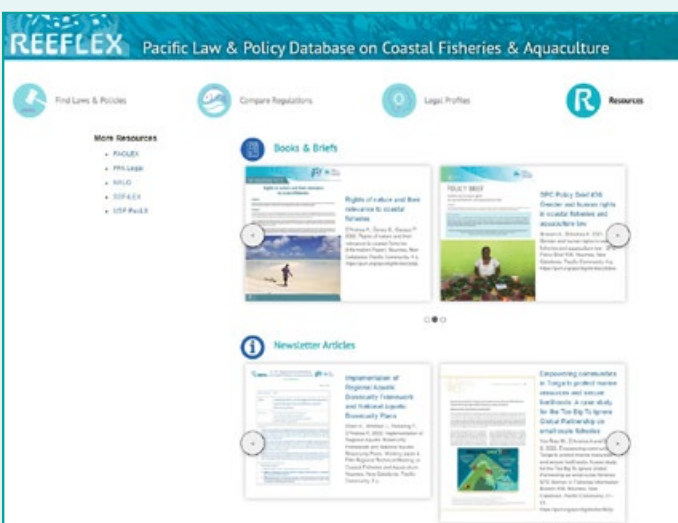


**Find Laws & Policies** is a document repository, curated by FAME, where users can search and download a selection of legislation, strategic documents and management plans dealing with coastal fisheries and aquaculture, by country or territory of interest.

**Compare Regulations** allows users to examine and compare specific management measures for different marine species that are regulated in each country or territory.



**Legal Profiles** provides an overview of the management and governance frameworks in place for coastal fisheries and aquaculture management, serving as an entry point for gaining insights into each country or territory.



**Resources** is a collection of publications on coastal fisheries law and policy for the region.





# Engaging stakeholders in coastal fisheries management

**"Personally, I find REEFLEX very useful, as we don't have an internal legal library. All documents are readily accessible from the database, and I use it mainly to disseminate information on fisheries and aquaculture regulations.**

**The Compare Regulations section is helpful, and I've already used it several times, for particular species or fishing techniques."**

Baptiste Jaugeon, Agriculture, Forestry and Fisheries Division, Wallis and Futuna.

Beyond its functionalities as a database, REEFLEX serves as a platform for engaging stakeholders in coastal fisheries management. REEFLEX promotes the dissemination of national management measures and awareness of the rules governing the use of marine resources. It fosters collaboration between stakeholders by sharing advances from neighbouring countries.

## Make it yours!

The wealth of information found on REEFLEX belongs to the Pacific Island peoples. To keep it relevant and up to date, we invite you to join us in making meaningful impact on coastal fisheries and aquaculture management in the Pacific region.

If your job involves fisheries law and policy in one of SPC's member countries or territories, we encourage you to get in touch with us and become part of this collaborative effort by:

- contributing your knowledge and suggestions to improve the database;
- sharing a copy of recently adopted policies, laws, regulations, management plans or local bylaws on coastal fisheries and aquaculture; and
- informing us of any institutional changes in the agency in charge of fisheries and aquaculture in your country or territory.

You could become a contact point for your country or territory and directly contribute to this pioneering regional effort towards the sustainable management of coastal reefs and species of the Pacific Ocean.

Together, let's ensure that marine resources remain a vital source of food and prosperity for Pacific Island communities.

Contact us at  
**REEFLEX@spc.int**

Our homepage is  
**<https://www.spc.int/CoastalFisheries/Legislation>**

The REEFLEX database is managed by SPC's Coastal Fisheries and Aquaculture Programme and can be accessed from the Fisheries, Aquaculture and Marine Ecosystems (FAME) Division webpage. It is interconnected with other SPC platforms such as Echoes of Oceania on community-based fisheries management.



Pacific Community  
Communauté du Pacifique